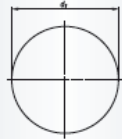




Industry

PSG, Abrasive discs, quick-change, Fleece Reg. Aluminium oxide

Ordering example: A3374038005



Packing unit  
50 pcs. per type,  
from Ø 75 mm: 25 pcs. per type

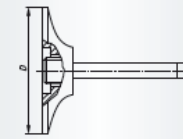
Description	Quality Grits	d <sub>1</sub> mm	n max. (1/min)	Suitable carriers	Product-Number	recommended for		
PSG 038	Fleece fine	38	10.000	GTG 038	A3374038005	1 2 3 4 5 6 7 8		■
PSG 038	Fleece coarse	38	10.000	GTG 038	A3374038004	1 2 3 4 5 6 7 8		■
PSG 038	Fleece medium	38	10.000	GTG 038	A3374038002	1 2 3 4 5 6 7 8		■
PSG 050	Fleece fine	51	8.000	GTG 038 and GTG 050	A3374050005	1 2 3 4 5 6 7 8		■
PSG 050	Fleece coarse	51	8.000	GTG 038 and GTG 050	A3374050004	1 2 3 4 5 6 7 8		■
PSG 050	Fleece medium	51	8.000	GTG 038 and GTG 050	A3374050002	1 2 3 4 5 6 7 8		■
PSG 075	Fleece fine	75	5.500	GTG 075	A3374075005	1 2 3 4 5 6 7 8		■
PSG 075	Fleece coarse	75	5.500	GTG 075	A3374075004	1 2 3 4 5 6 7 8		■
PSG 075	Fleece medium	75	5.500	GTG 075	A3374075002	1 2 3 4 5 6 7 8		■



Industry

GTG, Mandrels for quick-change abrasive discs

Ordering example: A33500200026



Packing unit  
1 pc. per type  
n max.: please also refer to Abrasive discs, PSG,  
page 326-330

Description	D mm	S mm	Type	n max. (1/min)	Product-Number													
GTG 020.06	18	6	medium	40.000	A33500200026													■
GTG 025.06	23	6	medium	40.000	A33500250026													■
GTG 038.06	33	6	medium	25.000	A33500380026													■
GTG 050.06	45	6	medium	25.000	A33500500026													■
GTG 050.06	45	6	hard	30.000	A33500500036													■
GTG 075.06	70	6	medium	20.000	A33500750026													■
GTG 075.06	70	6	hard	20.000	A33500750036													■

The mandrels are supplied in a **medium** hardness for universal application. For severe applications (when using Z POWER and CERAMIC) please use **hard** quality mandrels.

The stated maximum operating speed is calculated using the maximum mandrel diameter and maximum overhang  $L_0$  of 5 mm. For other overhangs and smaller mandrel diameters, the maximum operating speed must be re-calculated.

