

SHERPA

2020 = MINI-LOADERS



V.20.1 ENG



PRICELIST

Introduction

SHERPA mini-loaders is one of the leading manufacturers of employee-friendly road construction equipment in Europe.

As an innovative developer of the SHERPA miniloader and other advanced building equipment, especially for the pavement sector, we have been working hard to provide our customers and dealers with a fully labour-relieving program.

Our SHERPA mini-loaders are designed in such a way that everyone can work with them. Heavy and difficult work belongs to the past when you make use of our machines and tools.

You're investing in a healthy and productive future of your employees with equipment, tools and mini-loaders from SHERPA mini-loaders!



....Made in Holland

Copyright © 2013-2020 SHERPA mini-loaders
All rights reserved.

Any form of reproduction, reprinting or unauthorized use without the written permission of SHERPA mini-loaders is strictly prohibited.

SHERPA
= MINI-LOADERS

100/150 ATTACHMENTS



Bucket, 111cm with Hardox® knife
For transporting and levelling of sand and gravel.

Article: 00500
Height: 39cm
Volume: 127l



Bucket, 85cm with Hardox® knife
For transporting and levelling of sand and gravel.

Article: 00450
Height: 39cm
Volume: 98l



Bucket, 76cm with Hardox® knife
For transporting and levelling of sand and gravel.

Article: 00449
Height: 39cm
Volume: 87l



Volume bucket, 100cm with Hardox® knife
For moving sand, ground, gravel or other loose materials.

Article: 00490
Height: 63cm
Width: 100cm
Volume: 241l



Volume bucket, 85cm with Hardox® knife
For moving sand, ground, gravel or other loose materials.

Article: 00485
Height: 63cm
Width: 85cm
Volume: 204l



Volume bucket, 76cm with Hardox® knife
For moving sand, ground, gravel or other loose materials.

Article: 00449V
Height: 48cm
Width: 76cm
Volume: 137l

100/150 ATTACHMENTS



4-1 bucket, 111cm with Hardox® knife

To move hoist, dump sand, ground, gravel or other loose materials, for grabbing branches and other pruning wood and for levelling various substrates.

Article: 00507
Width: 111cm
Work pressure: 80bar



4-1 bucket, 76cm with Hardox® knife

To move hoist, dump sand, ground, gravel or other loose materials, for grabbing branches and other pruning wood and for levelling various substrates.

Article: 00505
Width: 76cm
Work pressure: 100bar



Bucket with grab, 111cm with Hardox® knife

For moving manure, straw, silage, sand or other loose materials.

Article: 00504-112
Width: 111 cm
(Option) sideplates set: 00504-ZP



Bucket with grab, 85cm with Hardox® knife

For moving manure, straw, silage, sand or other loose materials.

Article: 00504-85
Width: 85cm
(Option) sideplates set: 00504-ZP



Bucket with grab, 76cm with Hardox® knife

For moving manure, straw, silage, sand or other loose materials.

Article: 00504-76
Width: 76cm
(Option) sideplates set: 00504-ZP

100/150 ATTACHMENTS



Hydraulic manure forks with clamp, 85cm

For moving "lifting" and "tipping" of manure, straw, hay, grass and such. Excluding inner bucket.

Article: 00877-85
Width: 85cm



Hydraulic manure forks with clamp, 76cm

For moving "lifting" and "tipping" of manure, straw, hay, grass and such. Excluding inner bucket.

Article: 00877-76
Width: 76cm



Hydraulic weed brush, steel

For removing weeds between stones or for cleaning gutters and traffic islands.

Article: 00937
Diameter brush: ± 80 cm
(Option) blocking lever: 07100-A



Hydraulic weed brush, plastic

For removing weeds between stones or for cleaning gutters and traffic islands.

Article: 00937K
Diameter brush: ± 80 cm
(Option) blocking lever: 07100-A



Hydraulic weed brush, steel/plastic

For removing weeds between stones or for cleaning gutters and traffic islands.

Article: 00936
Diameter brush: ± 80 cm
(Option) blocking lever: 07100-A



Spare brushes for weed brush:

Steel: 00937-1-B
Plastic:* 00937-1-BD
Steel/Plastic:* 00937-1-BC
*Steel cover needed: 00937-1-BCPL



Hydraulic mower deck

3 knives.

Article: 30155
Width: 122cm
(Option) blocking lever: 07100-A

100/150 ATTACHMENTS



Rotary Tiller

For milling ground (10cm deep) with stones and high grass.

| | |
|--------------------------|---------|
| Article: | 100004 |
| Weight: | 194 kg |
| Width: | 1205mm |
| Height: | 590mm |
| Depth: | 770mm |
| (Option) Blocking lever: | 07100-A |

ATTENTION!

Leakage piping

It is necessary to mount a leakage pipe on the machine when you use this attachment. (01125-LK)



Stone Hook

For breaking open stones or tiles.

| | |
|----------|-------|
| Article: | 00600 |
|----------|-------|



Slab Bucket

For breaking up tiles.

| Kind of tiles | Article |
|---------------|---------|
| 60x60 tiles | 00627 |
| 30x30 tiles | 00625 |



Pin Bucket

For moving, lifting, tilting and breaking out street work, turf and other surfaces.

| | |
|----------|-------|
| Article: | 30090 |
|----------|-------|



Set Pallet forks

For lifting small pallets and solid materials.
Pallet board included.

| | |
|--------------|-------|
| Article: | 00650 |
| Fork length: | 80cm |

ATTENTION!

Make sure the load does not exceed the mounting plate, due to falling materials!



Trailer coupling

For shunting trailers, suitable for ø50mm towball.
Includes ø50mm ball.

| | |
|----------|-------|
| Article: | 01360 |
|----------|-------|

100/150 ATTACHMENTS



Hydraulic snow- / feed slider

For moving "shifting" feed, straw, silage, snow or other loose materials.

Article: 00512



Mechanical feed slider

For moving "shifting" feed, straw, silage, snow or other loose materials.

Article: 00510



Gritter

Article: 00520

Slider & gritter

Article: 00510+ 00520



Mast with electric winch

For lifting loads with the help of an electric winch and a lifting hook, lifting chain or lifting strap.

Article: 01358



Lifting arm

For lifting loads using a load hook, hoisting chain or in combination with a stone clamp and suction cups.

Article: 01350

Lifting hook

Max. lifting capacity is 200 kg.

Article: 02110



Hydraulic trencher, Digga®

Ideal for trenching.

Article: 00975

Trench depth: Up to 90cm

(Option) blocking lever: 07100-A

100/150 ATTACHMENTS



Levelling framework

For levelling sand and gravel.
Including scarifying rake.

Article: 00448
Width: 130cm



Carpet-remover

For removing various floor coverings from
a concrete surface.

Article: 00530
Width: 75cm



Broom

For brushing your paved surfaces.

Article: 00575
Width: 170cm



Roller broom

For cleaning hard surfaces.

Article: 00925
(Option) blocking lever: 07100-A



Roller broom, 111cm - mounted on bucket

For cleaning hard surfaces and directly catching
the dirt into the bucket - Exclusive bucket.

Article: 00926
(Option) blocking lever: 07100-A



Roller broom, 85cm - mounted on bucket

For cleaning hard surfaces and directly catching
the dirt into the bucket - Exclusive bucket.

Article: 00927
(Option) blocking lever: 07100-A



Roller broom, 76cm - mounted on bucket

For cleaning hard surfaces and directly catching
the dirt into the bucket - Exclusive bucket.

Article: 00935
(Option) blocking lever: 07100-A

100/150 ATTACHMENTS



ATTENTION!

Hydraulic earth drill installation

For drilling holes in sandy soil.
Exclusive drill.

Article: 01125
(Option) blocking lever: 07100-A

Leakage piping

It is necessary to mount a leakage pipe on the machine when you use this attachment.
(01125-LK)

Extension 50cm 01330
Extension 100cm 01325

Drills for the hydraulic earth drill (Length: 100cm)

| Diameter (inch) | 4 | 6 | 9 | 12 | 14 | 16 | 18 | 24 |
|-----------------|-------|-------|-------|-------|-------|-------|-------|-------|
| Diameter (mm) | 100 | 150 | 230 | 300 | 360 | 410 | 460 | 610 |
| Article | 01150 | 01175 | 01200 | 01225 | 01250 | 01275 | 01280 | 01300 |



Demolition hammer, GlobRam® RM45s

Used for 112cm wide miniloaders

Including coupling plate and round chisel.

Article: 00945
Impact energy: 145 Joule

Loose chisels for RM45s:

Round: 00945-SBR
Flat/round: 00945-SBP
Flat/wide: 00945-SBPV



Demolition hammer, GlobRam® RM40

Used for 76cm wide miniloaders

Including coupling plate and round chisel.

Article: 00946
Impact energy: 140 Joule

Loose chisels for RM40:

Round: 00946-SBR

100/150 ATTACHMENTS



Hydraulic slab- / curb clamp

For transporting 1 row of tiles or curb stones.

Article: 00725
Max. open: 145cm
Min. closed: 90cm



Hydraulic stone clamp

For transporting max. 80 stones.

Usable for 3 or 4 rows of stones (60 cm - 80 cm).

Article: 00700
Max. open: 93cm
Min. closed: 59cm



Hydraulic curbstone clamp

For the transportation of (building) bricks.

Article: 00790
Max. open: 129cm
Min. closed: 76cm



Hydraulic clamp for rotating 90 degrees forwards

For lifting and rotating (90°) various products made of concrete.

Article: 00775
Max. open: 83cm
Min. closed: 43cm
Rotation angle: 90°



Inset tilting clamp

For taking up trunks and gas cylinders.

Article: 00810



Hydraulic tree grab

For grabbing several small trunks or for grabbing a large trunk per unit. Without rotor.

Article: 01010

100/150 ATTACHMENTS



Hydraulic curbstone clamp HK0472

For lifting and placing various products made of concrete.
Excluding extension arm, handles and certificated lifting hook.

Article: 02009
Max. open: 72cm
Min. closed: 4cm



Handles

To extend the handles on the clamp.

Article: 02025



Hydraulic grass-tile clamp

For transporting and placement of 2,3 or 4 grass-tiles,
in a row. Exclusive extension arm.

Article: 00850



Hydraulic grass-tile clamp

For transporting and placement of grass-tiles,
2x2 in block connection. Excluding extension arm, including
certificated chain.

Article: 00855



Dumper

For transporting sand and other loose cargo.
Other colours are possible with a surcharge.

Article: 00300
Volume bucket: 0.55m³
Colour: Yellow (RAL 1007)



Hydraulic concrete mixer

For mixing gravel, sand, cement and water
into cement and/or mortar.

Article: 00715
Volume: 140l

200/300 ATTACHMENTS



Bucket, with Hardox® knife

SHERPA 200

For moving “lifting” and “tipping” vowels, tiles, sand, soil, gravel or other loose materials. Including inlay plate and quick fastener.

Article: 30050
Width: 124cm

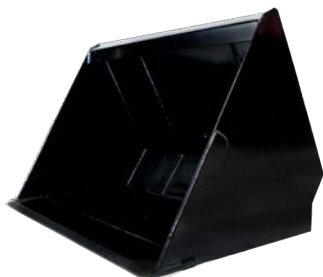


Bucket, with Hardox® knife

SHERPA 300

For moving “lifting” and “tipping” vowels, tiles, sand, soil, gravel or other loose materials. Including inlay plate and quick fastener.

Article: 30070
Width: 129cm



Closed bucket, with Hardox® knife

For moving “lifting” and “tipping” sand, soil, gravel or other loose materials.

Article: 30027
Width: 95cm
Volume: 210l



Closed bucket, with Hardox® knife

For moving “lifting” and “tipping” sand, soil, gravel or other loose materials.

Article: 30025
Width: 129cm
Volume: 286l



Set Pallet forks

For moving pallets and solid materials. Pallet board included.

Article: 00660
Fork length: 100cm

ATTENTION!

Make sure the load does not exceed the mounting plate, due to falling materials!

200/300 ATTACHMENTS



Snow push / feeding slider

For pushing animal feed or snow.

Article: 00515



Hydraulic manure forks with clamp

For mucking out stables.

Article: 00873



Pin bucket 100

For moving "lifting" and "tilting" vowels and tiles, breaking out street work, turf and other surfaces.

Article: 30110

Length of pins: 100cm



Levelling framework

For leveling sandy soils. With the scarifying rake, the top layer of the sand or grass surface can be detached again. Including scarifying rake.

Article: 70110

Width: 190cm



Hydraulic mower desk

With 3 knives.

Article: 30160

ATTENTION!

Leakage piping

It is necessary to mount a leakage pipe on the machine when you use this attachment. (01125-LK)

200/300 ATTACHMENTS



Broom

For brushing your paved surface.

Article: 00580
Width: 70cm



Roller broom

For sweeping different kind of surfaces.
With 'Tuchel ECO150'.
Including Parallel guide.

Article: 00950



Hydraulic weed brush, steel*

For removing weeds between stones or for cleaning gutters and traffic islands.

Article: 00937-23
Diameter brush: ±80cm
(Option) blocking lever: 07100-A



Hydraulic weed brush, plastic

For removing weeds between stones or for cleaning gutters and traffic islands.

Article: 00937-23K
Diameter brush: ±80cm
(Option) blocking lever: 07100-A



Hydraulic weed brush, steel/plastic

For removing weeds between stones or for cleaning gutters and traffic islands.

Article: 00936-23
Diameter brush: ±80cm
(Option) blocking lever: 07100-A



Spare brushes for the weed brush:

Steel: 00937-1-B
Plastic:* 00937-1-BD
Steel/Plastic:* 00937-1-BC
*Steel cover needed 00937-1-BCPL

200/300 ATTACHMENTS



Lifting arm, extendable

For lifting loads using a lifting hook, hoisting chain or in combination with a stone clamp and suction cups.
Exclusive certified lifting hook.

Article: 06481
Length: 776-1320mm



Lifting hook

Max. lifting capacity is 200 kg.

Article: 02110



Hydraulic curb clamp

To transport half a pack of stones or tires.
Exclusive lifting arm and rotor.

Article: 01390



Hydraulic stone clamp

For transporting at most 80 stones.
Usable for 3 or 4 rows of stones (60cm-80cm)

Article: 01380
Max. open: 93cm
Min. closed: 59cm



Hydraulic curbstone clamp HK0472

For lifting and placing various products made of concrete.
Exclusive extension arm, handles and certified lifting hook.

Article: 02009
Max. open: 72cm
Min. closed: 4cm



Handles

For extending handles on the clamp.

Article: 02025

200/300 ATTACHMENTS



Hydraulic slab- / curb clamp

For transporting two rows of tiles or curb stones.

| | |
|--------------|-------|
| Article: | 00730 |
| Max. open: | 170cm |
| Min. closed: | 90cm |



Hydraulic grass-tile clamp

For transporting and placement of 2,3 or 4 grass-tiles, in a row. Exclusive extension arm.

| | |
|----------|-------|
| Article: | 00850 |
|----------|-------|



Hydraulic grass-tile clamp

For transporting and placement of grass-tiles, 2x2 in block connection. Excluding extension arm, including certificated chain.

| | |
|----------|-------|
| Article: | 00855 |
|----------|-------|



Hydraulic bale clamp

For picking up and transporting bales.

| | |
|----------|-------|
| Article: | 00915 |
|----------|-------|

200/300 ATTACHMENTS



Hydraulic earth drill installation

For drilling holes in sandy soil.
Exclusive drill.

Article: 01125-200
(Option) blocking lever: 07100-A

ATTENTION!

Leakage piping

It is necessary to mount a leakage pipe on the machine when you use this attachment (01125-LK)

Extension 50cm 01330
Extension 100cm 01325

Drills for the hydraulic earth drill (Length: 100cm)

| Diameter (inch) | 4 | 6 | 9 | 12 | 14 | 16 | 18 | 24 |
|-----------------|-------|-------|-------|-------|-------|-------|-------|-------|
| Diameter (mm) | 100 | 150 | 230 | 300 | 360 | 410 | 460 | 610 |
| Article | 01150 | 01175 | 01200 | 01225 | 01250 | 01275 | 01280 | 01300 |



Demolition hammer, GlobRam® RM48

Including coupling plate and round chisel.

Article: 00947
Impact energy: 235 Joule

Loose chisels for the demolition hammer:

Round: 00948-SBR
Flat/round: 00948-SBP
Flat/wide: 00948-SBPV

HYDRAULIC CURBSTONE/TILELIFTERS



Hydraulic curbstone/tilelifter

SHERPA100

Exclusive vacuum unit and sucking cup.

Article: 01960

With an easy to use mounting system through which you can quickly install or disassemble the curbstone-lifter, a hydraulic swivel head which facilitates turning and operable by joysticks.



Hydraulic curbstone/tilelifter

SHERPA200

Exclusive vacuum unit and sucking cup.

Article: 01980

The curbstone/tilelifter is mounted on the backside of the SHERPA 200 and has been equipped with a hydraulic swivel head which facilitates turning and joysticks which make it possible to operate the machine by walking alongside the machine.



Hydraulic curbstone/tilelifter

SHERPA300

Exclusive vacuum unit and sucking cup.

Article: 01990

The curbstone/tilelifter is mounted on the backside of the SHERPA 300 and has been equipped with a hydraulic swivel head which facilitates turning and joysticks which make it possible to operate the machine by walking alongside the machine.

Prices
(Excl. 21% V.A.T)

LEVELLING SYSTEMS



Mechanical levelling system for footpath

Article: 71010
Width: 180cm



Mechanical levelling system for roadway

Article: 71000
Width: 500cm

100 TIRES AND RIMS

** Prices per set of four, including rim



Grass profile tires (Small)

Article: 05285
Size: 4.00-10
Brand: Sava

Width of the standard machine totals 84cm.
Width of the narrow machine totals 76cm.
Used in small and narrow areas.



Grass profile tires (Medium)

Article: 05255
Size: 18x8.50-8 D265 PR4
Brand: Deestone

Width of the standard machine totals 108cm.
Width of the narrow machine totals 100cm.
Used on hard and grass surfaces.

Grass profile tires (Wide)

Article: 05250
Size: 20x10.00-8 D265
Brand: Deestone

Width of the standard machine totals 111cm.
Width of the narrow machine totals 103cm.
Used on hard and grass surfaces.



100% rubber tires (Small)

Article: 05259-4
Size: 4.00-8

Width of the standard machine totals 85cm.
Width of the narrow machine totals 76cm.
Used on hard surfaces.



100% rubber tires (Small)

Article: 05259-5
Size: 5.00-8

Width of the standard machine totals 87cm.
Width of the narrow machine totals 79cm.
Used on hard surfaces.

100 TIRES AND RIMS

** Prices per set of four, including rim



Trac profile tires (Small)

Article: 05279
Size: 4.00-10
Brand: Deestone

Width of the standard machine totals 84cm.
Width of the narrow machine totals 76cm.
Used in small and narrow areas.



Trac profile tires (Medium)

Article: 05296
Size: 18x8.50-8 4PR HF255
Brand: Duro

Width of the standard machine totals 108cm.
Width of the narrow machine totals 100cm.
Used on most surfaces.



Trac profile tires (Wide)

Article: 05295
Size: 22x11.00-8
Brand: Deestone

Width of the standard machine totals 113cm.
Width of the narrow machine totals 105cm.
Used on most surfaces.

Surcharge vulcanizing (rubber)



Non-marking tires (Small)

Article: 05286-4.00
Size: 4.00-8



Non-marking tires (Small)

Article: 05286-5.00
Size: 5.00-8

150/200/300 TIRES AND RIMS

**** Prices per set of four, including rim**



Trac profile tires (Small)

SHERPA 150

Article: 05236-S
Size: 5.70-1 2NHS
Brand: Armour

Width of the SHERPA 150 totals 76cm.
Used on most surfaces.



Grass profile tires (Wide)

SHERPA 150/200

Article: 05236-V
Size: 24.00x13.00-12
Brand: Maxxis

Width of the SHERPA 150 totals 112cm.
Width of the SHERPA 200 totals 124cm.



Trac profile tires (Wide)

SHERPA 300

Article: 05220
Size: 31.00x15.50-15
Brand: Mitas

Width of the SHERPA 300 totals 129cm.

OPTIONS AND ACCESSORIES



Turning wheels

SHERPA100

For turning without friction on the pavement.
Including assembly.

Article: 00375



Ballast block (Wide)

SHERPA100

By placing an extra ballast block on the backside of the machine
it's possible to lift more weight.

Article: 00405

Weight: 48kg



Ballast block (Small)

SHERPA100

By placing an extra ballast block on the backside of the machine
it's possible to lift more weight.

Article: 00405-S

Weight: 40kg



LED light

SHERPA 100

Article: 03243-100



Lightning package

SHERPA150/200/300

1 rotating light and 3 working lights.
Including assembly.

Article: 08478-1-3



Lightning package

SHERPA150/200/300

1 rotating light and 3 LED working lights.
Including assembly.

Article: 08478-1-3LED

OPTIONS AND ACCESSORIES



Trailer coupling

SHERPA 150/200/300

For shunting trailers etc. - Including assembly.
Ball diameter \varnothing 50.

Article: 00375
Ball diameter: \varnothing 50
Capacity: 200kg



Ballast block

SHERPA 150

By placing an extra ballast block on the backside of the machine it is possible to lift more weight. Including assembly.

Article: 15000-1-W-J12
Weight: 47kg



Ballast block

SHERPA 200-300

By placing an extra ballast block on the backside of the machine it is possible to lift more weight. Including assembly.

Article: 00402
Weight: 70kg



Drive on plates

Article: 01375
Length: 208cm

OPTIONS AND ACCESSORIES



Mounting plate

SHERPA 200/300

For mounting attachments of the SHERPA 100 on a SHERPA 200 or SHERPA 300. Including hydraulic hoses.

Article: 06270

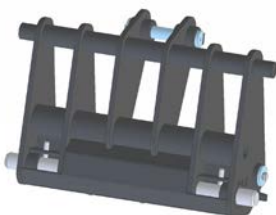


Mounting plate KNIKMOPS® 130

SHERPA 200/300

For mounting attachments of the KNIKMOPS®130 on a SHERPA 200 or 300. Including hydraulic hoses.

Article: 06265



Mounting plate GIANT®

SHERPA 200/300

Used for GIANT® attachments.

Article: 06418

VACUUM UNITS & LIFTING TOOLS



40 m³ vacuum BM40

Article: 06270
Motor: Honda GX160



Vacuum unit frame **SHERPA 150, 200 en 300**

For the use of vacuum tools.

Article: 07570-F

40 m³ vacuum BS40-11, hydraulically driven **SHERPA 100 en 300**

For the use of vacuum tools.

Article: 07555



Teli 60, vacuum lifting tool

Used for concrete and gravel tiles.
Exclusive sucking cup.

Article: 08710
Motor: Honda GX270

VACUUM UNITS & LIFTING TOOLS



Sucking cup holder

Including vacuum valve, vacuum manometer and certified lifting chain. Exclusive handles.

Article: 01785



Sucking cup, for Stelcon® plates

Article: 01635
Size: 60cm x 115cm
Lifting capacity: max. 1400kg



Sucking cup, for Stelcon® plates

Article: 01660
Size: 60cm x 115cm
Lifting capacity: max. 1800kg



Sucking cup, for curbstones

Excluding spacers.

Article: 01425
Size: 90cm x 8cm
Lifting capacity: 140kg



Sucking cup, for driveway blocks

Excluding spacers.

Article: 01500
Size: 40cm x 20cm
Lifting capacity: 140kg



Sucking cup 350 x 450

Used for several concrete and gravel tiles.

Article: 01600
Size: 35cm x 45cm
Lifting capacity: 140kg

SUCKING CUPS & CLAMPS



Sucking cup RWS

Used for placing curbstones RWS.

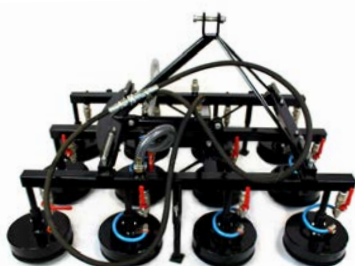
Article: 01525
Size: 60cm x 22cm
Lifting capacity: 140kg



Sucking cup, sixfold

Used for lifting and placement of 4, 5, or 6 '30x30' tiles simultaneously.

Article: 01685



Sucking cup, twelvefold

Used for lifting and placement of 12 '30x30' tiles simultaneously.

Article: 01675



Hydraulic curbstone clamp HK0472

For lifting and placing various products made of concrete. Exclusive extension arm, handles and certified lifting hook.

Article: 02009
Max. open: 72cm
Min. closed: 4cm



Handles

To extend the handles on the clamp.

Article: 02025



Lifting hook

Max. lifting capacity is 200 kg.

Article: 02110

SUCKING CUPS & CLAMPS



Hydraulic grass-tile clamp

For transporting and placement of 2,3 or 4 grass-tiles, in a row. Exclusive extension arm.

Article: 00850



Hydraulic grass-tile clamp

For transporting and placement of grass-tiles, 2x2 in block connection. Excluding extension arm, including certificated chain.

Article: 00855



Curbstone-clamp

For setting and removing concrete tires. Certified lifting chain included.

Article: 02000



Clamp for driveway blocks

Used for lifting and placement of driveway blocks . Including certified lifting chain.

Article: 02075



Mechanical grass-tile clamp

Article: 02060



Tile lifter

Article: 90925

Tile lifter increased* 10 cm higher

Article: 90925+



Tile lifter, for two persons

Article: 90930



Manhole cover lifter

Article: 09100