

made  
in  
germany



Ultrasonics.Steam.Ultraclean.



Healthcare

## Elmasteam 4<sup>5</sup> med

**We set new standards for the steam jet cleaning of surgical instruments**

- 4.5 bar steam pressure with latest safety technology
- Constant steam pressure level due to high heating power
- Luer-Lock adapter for the perfect cleaning of hollow pieces
- Registered as medical device class I\* and with 3 years warranty\*\*

[www.elma-ultrasonic.com](http://www.elma-ultrasonic.com)

# Elmasteam 4<sup>5</sup> med

## Your reliable helper for difficult cleaning jobs

Certain instruments, such as dental burrs, drills and electro-surgical instruments, often do not become sufficiently clean in the standard washing and disinfecting unit.

The Elmasteam 4<sup>5</sup> med steam jet cleaner solves this problem easily by pre-cleaning the complicated instruments so that the number of insufficiently cleaned items need to be cleaned again is reduced to a minimum. Diamond burrs for instance will become flawlessly clean with the Elmasteam 4<sup>5</sup> med. Thanks to the powerful combination of pressure, speed and temperature, microscopic vapour particles penetrate even hard-to-reach gaps,

cavities and tiny depressions to thoroughly dissolve contaminants such as blood, grease and tissue residues.

The Elmasteam 4<sup>5</sup> med can also be used to pre-clean hollow instruments inside. Instruments with a Luer-Lock connector can be coupled directly to the hand piece (with 1.3 m hose). For the pre-cleaning of hollow instruments without Luer-Lock connector, a set of adaptor pieces is optionally available.

However, the Elmasteam 4<sup>5</sup> med does NOT replace processing in the washing and disinfecting unit.

### There are two versions of the Elmasteam 4<sup>5</sup> med:

- **Elmasteam 4<sup>5</sup> med basic:**  
filled manually via the integrated funnel
- **Elmasteam 4<sup>5</sup> med P:**  
unit with pump,  
filled automatically  
via the water feed  
connection on the rear  
of the unit

- Elmasteam 4<sup>5</sup> med is also **prepared for wall mounting** (wall bracket available as optional accessory) and thus **needs only little space** on the working place

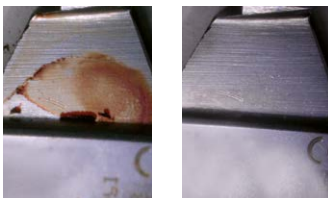


- Compact design:  
only 25 x 31 cm floor space

- Drain valve for the quick and **easy draining** (only depressurised) **and decalcifying** of the tank
- Automatic water supply via water connection (only Elmasteam 4<sup>5</sup> med P)

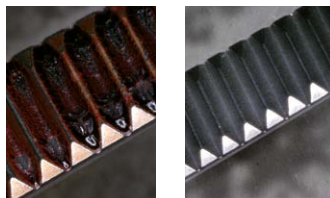
### Application examples before and after the cleaning

Hemostatic forceps



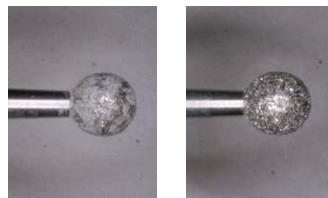
Removal of blood

Dissecting forceps



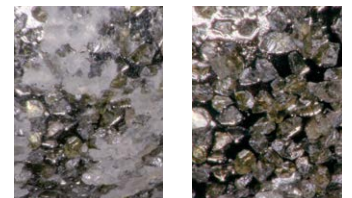
Removal of blood

Diamond burr



Removal of bone meal

Diamond burr - Detail



Application pictures © www.mittelohr.de

# Elmasteam 4<sup>5</sup> med

## Application-oriented functions and easy maintenance

QUALITY and SAFETY are top priorities at Elma. This means, only tried and tested components and high quality materials are used.

The **powerful heating performance** of the Elmasteam units guarantees **constant steam pressure** even during intensive use while the sophisticated two-chamber design that separates the water-conducting system from the electrical system ensures maximum reliability.

The pressure tank with a filling volume of approx. 3.3 litres is cast from special material. The heating is integrated into the tank and emits its energy into the water over a large area. Thus the service life of the heating is extended even if the device is operated with

tap water. It is recommended that demineralised water is used, in order to significantly reduce the maintenance intervals. If mains water is used, regular rinsing out via the safety ball valve in accordance with the operating instructions must be performed using the rinsing set. Especially when using tap water a water filtering cartridge from Brita can help to **reduce maintenance requirements and to extend service intervals**.

In addition to quality, attention was also paid to user safety, which is confirmed by the TÜV type test according to DIN 61010-1.

By taking these measures and provided that the unit is being operated properly, the usual warranty can be increased to 3 years.

### ■ Simple, manual start-up of the steam jet cleaner:

fill water via the integrated funnel in the tank, close the screw up and let the machine heat up

### ■ Clear operation display

for constant monitoring of the operating status

### ■ Indirect heating:

- Short heating-up time
- High steam availability
- Simple decalcification and tank cleaning
- Long service life

### ■ Flexible hand piece

(1.3 m hose) with Luer-Lock adapter and standard nozzle



# Elmasteam 4<sup>5</sup> med

Thought-out and compact design



## Technical data

Operating pressure (bar)	4.5
Pressure tank volume (l)	4.0
Max. filling volume (l)	3.3
Power consumption total- med basic (W)	2800
Power consumption total - med P (W)	2850

Steam temperature in the tank (°C)	max. 155
Steam temperature at the nozzle (°C)	max. 135
Dimensions W/D/H (mm)	290 / 320 / 420
Weight - med basic (kg)	6.75
Weight - med P (kg)	8.05

Scope of delivery includes:

Further accessories:



Tweezers · Sieve · Maintenance hose · Rinsing set · Extra tank cap with safety valve · 3/4" hose for water supply (only with Elmasteam 4<sup>5</sup> med P)



Adapter set consisting of 8 parts incl. pliers for changing the adapters



Steam absorber, available in various sizes



Water Filter Cartridge Brita purity C150 Quell ST

\*\*3 years warranty for proper use in accordance with the operating manual. Wear parts are not covered by the warranty.



Ultrasonics.Steam.Ultraclean.