

# SHERPA

## 2020 = MINI-LOADERS



V.20.1 ENG



# PRICELIST

## Introduction

SHERPA mini-loaders is one of the leading manufacturers of employee-friendly road construction equipment in Europe.

As an innovative developer of the SHERPA miniloader and other advanced building equipment, especially for the pavement sector, we have been working hard to provide our customers and dealers with a fully labour-relieving program.

Our SHERPA mini-loaders are designed in such a way that everyone can work with them. Heavy and difficult work belongs to the past when you make use of our machines and tools.

You're investing in a healthy and productive future of your employees with equipment, tools and mini-loaders from SHERPA mini-loaders!



*....Made in Holland*

Copyright © 2013-2020 SHERPA mini-loaders  
All rights reserved.

Any form of reproduction, reprinting or unauthorized use without the written permission of SHERPA mini-loaders is strictly prohibited.

**SHERPA**  
= MINI-LOADERS

# 100/150 ATTACHMENTS



**Bucket, 111cm with Hardox® knife**  
For transporting and levelling of sand and gravel.

Article: 00500  
Height: 39cm  
Volume: 127l



**Bucket, 85cm with Hardox® knife**  
For transporting and levelling of sand and gravel.

Article: 00450  
Height: 39cm  
Volume: 98l



**Bucket, 76cm with Hardox® knife**  
For transporting and levelling of sand and gravel.

Article: 00449  
Height: 39cm  
Volume: 87l



**Volume bucket, 100cm with Hardox® knife**  
For moving sand, ground, gravel or other loose materials.

Article: 00490  
Height: 63cm  
Width: 100cm  
Volume: 241l



**Volume bucket, 85cm with Hardox® knife**  
For moving sand, ground, gravel or other loose materials.

Article: 00485  
Height: 63cm  
Width: 85cm  
Volume: 204l



**Volume bucket, 76cm with Hardox® knife**  
For moving sand, ground, gravel or other loose materials.

Article: 00449V  
Height: 48cm  
Width: 76cm  
Volume: 137l

# 100/150 ATTACHMENTS



#### **4-1 bucket, 111cm with Hardox® knife**

To move hoist, dump sand, ground, gravel or other loose materials, for grabbing branches and other pruning wood and for levelling various substrates.

Article: 00507  
Width: 111cm  
Work pressure: 80bar



#### **4-1 bucket, 76cm with Hardox® knife**

To move hoist, dump sand, ground, gravel or other loose materials, for grabbing branches and other pruning wood and for levelling various substrates.

Article: 00505  
Width: 76cm  
Work pressure: 100bar



#### **Bucket with grab, 111cm with Hardox® knife**

For moving manure, straw, silage, sand or other loose materials.

Article: 00504-112  
Width: 111 cm  
(Option) sideplates set: 00504-ZP



#### **Bucket with grab, 85cm with Hardox® knife**

For moving manure, straw, silage, sand or other loose materials.

Article: 00504-85  
Width: 85cm  
(Option) sideplates set: 00504-ZP



#### **Bucket with grab, 76cm with Hardox® knife**

For moving manure, straw, silage, sand or other loose materials.

Article: 00504-76  
Width: 76cm  
(Option) sideplates set: 00504-ZP

# 100/150 ATTACHMENTS



### Hydraulic manure forks with clamp, 85cm

For moving "lifting" and "tipping" of manure, straw, hay, grass and such. Excluding inner bucket.

Article: 00877-85  
Width: 85cm



### Hydraulic manure forks with clamp, 76cm

For moving "lifting" and "tipping" of manure, straw, hay, grass and such. Excluding inner bucket.

Article: 00877-76  
Width: 76cm



### Hydraulic weed brush, steel

For removing weeds between stones or for cleaning gutters and traffic islands.

Article: 00937  
Diameter brush:  $\pm 80$ cm  
(Option) blocking lever: 07100-A



### Hydraulic weed brush, plastic

For removing weeds between stones or for cleaning gutters and traffic islands.

Article: 00937K  
Diameter brush:  $\pm 80$ cm  
(Option) blocking lever: 07100-A



### Hydraulic weed brush, steel/plastic

For removing weeds between stones or for cleaning gutters and traffic islands.

Article: 00936  
Diameter brush:  $\pm 80$ cm  
(Option) blocking lever: 07100-A



### Spare brushes for weed brush:

Steel: 00937-1-B  
Plastic:\* 00937-1-BD  
Steel/Plastic:\* 00937-1-BC  
\*Steel cover needed: 00937-1-BCPL



### Hydraulic mower deck

3 knives.

Article: 30155  
Width: 122cm  
(Option) blocking lever: 07100-A

# 100/150 ATTACHMENTS



## Rotary Tiller

For milling ground (10cm deep) with stones and high grass.

Article: 100004  
Weight: 194 kg  
Width: 1205mm  
Height: 590mm  
Depth: 770mm  
(Option) Blocking lever: 07100-A

### ATTENTION!

#### Leakage piping

It is necessary to mount a leakage pipe on the machine when you use this attachment. (01125-LK)



## Stone Hook

For breaking open stones or tiles.

Article: 00600



## Slab Bucket

For breaking up tiles.

Kind of tiles	Article
60x60 tiles	00627
30x30 tiles	00625



## Pin Bucket

For moving, lifting, tilting and breaking out street work, turf and other surfaces.

Article: 30090



## Set Pallet forks

For lifting small pallets and solid materials.  
Pallet board included.

Article: 00650  
Fork length: 80cm

### ATTENTION!

Make sure the load does not exceed the mounting plate, due to falling materials!



## Trailer coupling

For shunting trailers, suitable for  $\varnothing$ 50mm towball.  
Includes  $\varnothing$ 50mm ball.

Article: 01360

# 100/150 ATTACHMENTS



## Hydraulic snow- / feed slider

For moving "shifting" feed, straw, silage, snow or other loose materials.

Article: 00512



## Mechanical feed slider

For moving "shifting" feed, straw, silage, snow or other loose materials.

Article: 00510



## Gritter

Article: 00520

## Slider & gritter

Article: 00510+ 00520



## Mast with electric winch

For lifting loads with the help of an electric winch and a lifting hook, lifting chain or lifting strap.

Article: 01358



## Lifting arm

For lifting loads using a load hook, hoisting chain or in combination with a stone clamp and suction cups.

Article: 01350

## Lifting hook

Max. lifting capacity is 200 kg.

Article: 02110



## Hydraulic trencher, Digga®

Ideal for trenching.

Article: 00975

Trench depth: Up to 90cm

(Option) blocking lever: 07100-A



# 100/150 ATTACHMENTS



## Levelling framework

For levelling sand and gravel.  
Including scarifying rake.

Article: 00448  
Width: 130cm



## Carpet-remover

For removing various floor coverings from  
a concrete surface.

Article: 00530  
Width: 75cm



## Broom

For brushing your paved surfaces.

Article: 00575  
Width: 170cm



## Roller broom

For cleaning hard surfaces.

Article: 00925  
(Option) blocking lever: 07100-A



## Roller broom, 111cm - mounted on bucket

For cleaning hard surfaces and directly catching  
the dirt into the bucket - Exclusive bucket.

Article: 00926  
(Option) blocking lever: 07100-A



## Roller broom, 85cm - mounted on bucket

For cleaning hard surfaces and directly catching  
the dirt into the bucket - Exclusive bucket.

Article: 00927  
(Option) blocking lever: 07100-A



## Roller broom, 76cm - mounted on bucket

For cleaning hard surfaces and directly catching  
the dirt into the bucket - Exclusive bucket.

Article: 00935  
(Option) blocking lever: 07100-A



# 100/150 ATTACHMENTS



**ATTENTION!**

### Hydraulic earth drill installation

For drilling holes in sandy soil.  
Exclusive drill.

Article: 01125  
(Option) blocking lever: 07100-A

### Leakage piping

It is necessary to mount a leakage pipe on the machine when you use this attachment.  
(01125-LK)

**Extension 50cm** 01330  
**Extension 100cm** 01325

### Drills for the hydraulic earth drill (Length: 100cm)

Diameter (inch)	4	6	9	12	14	16	18	24
Diameter (mm)	100	150	230	300	360	410	460	610
Article	01150	01175	01200	01225	01250	01275	01280	01300



### Demolition hammer, GlobRam® RM45s

**Used for 112cm wide miniloaders**

Including coupling plate and round chisel.

Article: 00945  
Impact energy: 145 Joule

### Loose chisels for RM45s:

Round: 00945-SBR  
Flat/round: 00945-SBP  
Flat/wide: 00945-SBPV



### Demolition hammer, GlobRam® RM40

**Used for 76cm wide miniloaders**

Including coupling plate and round chisel.

Article: 00946  
Impact energy: 140 Joule

### Loose chisels for RM40:

Round: 00946-SBR

# 100/150 ATTACHMENTS



## Hydraulic slab- / curb clamp

For transporting 1 row of tiles or curb stones.

Article: 00725  
Max. open: 145cm  
Min. closed: 90cm



## Hydraulic stone clamp

For transporting max. 80 stones.

Usable for 3 or 4 rows of stones (60 cm - 80 cm).

Article: 00700  
Max. open: 93cm  
Min. closed: 59cm



## Hydraulic curbstone clamp

For the transportation of (building) bricks.

Article: 00790  
Max. open: 129cm  
Min. closed: 76cm



## Hydraulic clamp for rotating 90 degrees forwards

For lifting and rotating (90°) various products made of concrete.

Article: 00775  
Max. open: 83cm  
Min. closed: 43cm  
Rotation angle: 90°



## Inset tilting clamp

For taking up trunks and gas cylinders.

Article: 00810



## Hydraulic tree grab

For grabbing several small trunks or for grabbing a large trunk per unit. Without rotor.

Article: 01010

# 100/150 ATTACHMENTS



## Hydraulic curbstone clamp HK0472

For lifting and placing various products made of concrete.  
Excluding extension arm, handles and certificated lifting hook.

Article: 02009  
Max. open: 72cm  
Min. closed: 4cm



## Handles

To extend the handles on the clamp.

Article: 02025



## Hydraulic grass-tile clamp

For transporting and placement of 2,3 or 4 grass-tiles,  
in a row. Exclusive extension arm.

Article: 00850



## Hydraulic grass-tile clamp

For transporting and placement of grass-tiles,  
2x2 in block connection. Excluding extension arm, including  
certificated chain.

Article: 00855



## Dumper

For transporting sand and other loose cargo.  
Other colours are possible with a surcharge.

Article: 00300  
Volume bucket: 0.55m<sup>3</sup>  
Colour: Yellow (RAL 1007)



## Hydraulic concrete mixer

For mixing gravel, sand, cement and water  
into cement and/or mortar.

Article: 00715  
Volume: 140l

# 200/300 ATTACHMENTS



**Bucket, with Hardox® knife**

**SHERPA 200**

For moving “lifting” and “tipping” vowels, tiles, sand, soil, gravel or other loose materials. Including inlay plate and quick fastener.

Article: 30050  
Width: 124cm



**Bucket, with Hardox® knife**

**SHERPA 300**

For moving “lifting” and “tipping” vowels, tiles, sand, soil, gravel or other loose materials. Including inlay plate and quick fastener.

Article: 30070  
Width: 129cm



**Closed bucket, with Hardox® knife**

For moving “lifting” and “tipping” sand, soil, gravel or other loose materials.

Article: 30027  
Width: 95cm  
Volume: 210l



**Closed bucket, with Hardox® knife**

For moving “lifting” and “tipping” sand, soil, gravel or other loose materials.

Article: 30025  
Width: 129cm  
Volume: 286l



**Set Pallet forks**

For moving pallets and solid materials. Pallet board included.

Article: 00660  
Fork length: 100cm

**ATTENTION!**

Make sure the load does not exceed the mounting plate, due to falling materials!

# 200/300 ATTACHMENTS



### Snow push / feeding slider

For pushing animal feed or snow.

Article: 00515



### Hydraulic manure forks with clamp

For mucking out stables.

Article: 00873



### Pin bucket 100

For moving "lifting" and "tilting" vowels and tiles, breaking out street work, turf and other surfaces.

Article: 30110

Length of pins: 100cm



### Levelling framework

For leveling sandy soils. With the scarifying rake, the top layer of the sand or grass surface can be detached again. Including scarifying rake.

Article: 70110

Width: 190cm



### Hydraulic mower desk

With 3 knives.

Article: 30160

**ATTENTION!**

### Leakage piping

It is necessary to mount a leakage pipe on the machine when you use this attachment. (01125-LK)

# 200/300 ATTACHMENTS



## Broom

For brushing your paved surface.

Article: 00580  
Width: 70cm



## Roller broom

For sweeping different kind of surfaces.  
With 'Tuchel ECO150'.  
Including Parallel guide.

Article: 00950



## Hydraulic weed brush, steel\*

For removing weeds between stones or for cleaning gutters  
and traffic islands.

Article: 00937-23  
Diameter brush: ±80cm  
(Option) blocking lever: 07100-A



## Hydraulic weed brush, plastic

For removing weeds between stones or for cleaning gutters  
and traffic islands.

Article: 00937-23K  
Diameter brush: ±80cm  
(Option) blocking lever: 07100-A



## Hydraulic weed brush, steel/plastic

For removing weeds between stones or for cleaning gutters  
and traffic islands.

Article: 00936-23  
Diameter brush: ±80cm  
(Option) blocking lever: 07100-A



## Spare brushes for the weed brush:

Steel: 00937-1-B  
Plastic:\* 00937-1-BD  
Steel/Plastic:\* 00937-1-BC  
\*Steel cover needed 00937-1-BCPL

# 200/300 ATTACHMENTS



### Lifting arm, extendable

For lifting loads using a lifting hook, hoisting chain or in combination with a stone clamp and suction cups.  
Exclusive certified lifting hook.

Article: 06481  
Length: 776-1320mm



### Lifting hook

Max. lifting capacity is 200 kg.

Article: 02110



### Hydraulic curb clamp

To transport half a pack of stones or tires.  
Exclusive lifting arm and rotor.

Article: 01390



### Hydraulic stone clamp

For transporting at most 80 stones.  
Usable for 3 or 4 rows of stones (60cm-80cm)

Article: 01380  
Max. open: 93cm  
Min. closed: 59cm



### Hydraulic curbstone clamp HK0472

For lifting and placing various products made of concrete.  
Exclusive extension arm, handles and certified lifting hook.

Article: 02009  
Max. open: 72cm  
Min. closed: 4cm



### Handles

For extending handles on the clamp.

Article: 02025



# 200/300 ATTACHMENTS



### Hydraulic slab- / curb clamp

For transporting two rows of tiles or curb stones.

Article:	00730
Max. open:	170cm
Min. closed:	90cm



### Hydraulic grass-tile clamp

For transporting and placement of 2,3 or 4 grass-tiles, in a row. Exclusive extension arm.

Article:	00850
----------	-------



### Hydraulic grass-tile clamp

For transporting and placement of grass-tiles, 2x2 in block connection. Excluding extension arm, including certificated chain.

Article:	00855
----------	-------



### Hydraulic bale clamp

For picking up and transporting bales.

Article:	00915
----------	-------

# 200/300 ATTACHMENTS



## Hydraulic earth drill installation

For drilling holes in sandy soil.  
Exclusive drill.

Article: 01125-200  
(Option) blocking lever: 07100-A

### ATTENTION!

#### Leakage piping

It is necessary to mount a leakage pipe on the machine when you use this attachment (01125-LK)

**Extension 50cm** 01330  
**Extension 100cm** 01325

### Drills for the hydraulic earth drill (Length: 100cm)

Diameter (inch)	4	6	9	12	14	16	18	24
Diameter (mm)	100	150	230	300	360	410	460	610
Article	01150	01175	01200	01225	01250	01275	01280	01300



## Demolition hammer, GlobRam® RM48

Including coupling plate and round chisel.

Article: 00947  
Impact energy: 235 Joule

### Loose chisels for the demolition hammer:

Round: 00948-SBR  
Flat/round: 00948-SBP  
Flat/wide: 00948-SBPV

# HYDRAULIC CURBSTONE/TILELIFTERS



## Hydraulic curbstone/tilelifter

### **SHERPA100**

Exclusive vacuum unit and sucking cup.

Article: 01960

With an easy to use mounting system through which you can quickly install or disassemble the curbstone-lifter, a hydraulic swivel head which facilitates turning and operable by joysticks.



## Hydraulic curbstone/tilelifter

### **SHERPA200**

Exclusive vacuum unit and sucking cup.

Article: 01980

The curbstone/tilelifter is mounted on the backside of the SHERPA 200 and has been equipped with a hydraulic swivel head which facilitates turning and joysticks which make it possible to operate the machine by walking alongside the machine.



## Hydraulic curbstone/tilelifter

### **SHERPA300**

Exclusive vacuum unit and sucking cup.

Article: 01990

The curbstone/tilelifter is mounted on the backside of the SHERPA 300 and has been equipped with a hydraulic swivel head which facilitates turning and joysticks which make it possible to operate the machine by walking alongside the machine.

# LEVELLING SYSTEMS



## Mechanical levelling system for footpath

Article: 71010  
Width: 180cm



## Mechanical levelling system for roadway

Article: 71000  
Width: 500cm

# 100 TIRES AND RIMS

## \*\* Prices per set of four, including rim



### Grass profile tires (Small)

Article: 05285  
Size: 4.00-10  
Brand: Sava

Width of the standard machine totals 84cm.  
Width of the narrow machine totals 76cm.  
Used in small and narrow areas.



### Grass profile tires (Medium)

Article: 05255  
Size: 18x8.50-8 D265 PR4  
Brand: Deestone

Width of the standard machine totals 108cm.  
Width of the narrow machine totals 100cm.  
Used on hard and grass surfaces.

### Grass profile tires (Wide)

Article: 05250  
Size: 20x10.00-8 D265  
Brand: Deestone

Width of the standard machine totals 111cm.  
Width of the narrow machine totals 103cm.  
Used on hard and grass surfaces.



### 100% rubber tires (Small)

Article: 05259-4  
Size: 4.00-8

Width of the standard machine totals 85cm.  
Width of the narrow machine totals 76cm.  
Used on hard surfaces.



### 100% rubber tires (Small)

Article: 05259-5  
Size: 5.00-8

Width of the standard machine totals 87cm.  
Width of the narrow machine totals 79cm.  
Used on hard surfaces.

# 100 TIRES AND RIMS

## \*\* Prices per set of four, including rim



### Trac profile tires (Small)

Article: 05279  
Size: 4.00-10  
Brand: Deestone

Width of the standard machine totals 84cm.  
Width of the narrow machine totals 76cm.  
Used in small and narrow areas.



### Trac profile tires (Medium)

Article: 05296  
Size: 18x8.50-8 4PR HF255  
Brand: Duro

Width of the standard machine totals 108cm.  
Width of the narrow machine totals 100cm.  
Used on most surfaces.



### Trac profile tires (Wide)

Article: 05295  
Size: 22x11.00-8  
Brand: Deestone

Width of the standard machine totals 113cm.  
Width of the narrow machine totals 105cm.  
Used on most surfaces.

### Surcharge vulcanizing (rubber)



### Non-marking tires (Small)

Article: 05286-4.00  
Size: 4.00-8



### Non-marking tires (Small)

Article: 05286-5.00  
Size: 5.00-8

# 150/200/300 TIRES AND RIMS

**\*\* Prices per set of four, including rim**



## Trac profile tires (Small)

### SHERPA 150

Article: 05236-S  
Size: 5.70-1 2NHS  
Brand: Armour

Width of the SHERPA 150 totals 76cm.  
Used on most surfaces.



## Grass profile tires (Wide)

### SHERPA 150/200

Article: 05236-V  
Size: 24.00x13.00-12  
Brand: Maxxis

Width of the SHERPA 150 totals 112cm.  
Width of the SHERPA 200 totals 124cm.



## Trac profile tires (Wide)

### SHERPA 300

Article: 05220  
Size: 31.00x15.50-15  
Brand: Mitas

Width of the SHERPA 300 totals 129cm.



# OPTIONS AND ACCESSORIES



## Turning wheels

### SHERPA100

For turning without friction on the pavement.  
Including assembly.

Article: 00375



## Ballast block (Wide)

### SHERPA100

By placing an extra ballast block on the backside of the machine  
it's possible to lift more weight.

Article: 00405

Weight: 48kg



## Ballast block (Small)

### SHERPA100

By placing an extra ballast block on the backside of the machine  
it's possible to lift more weight.

Article: 00405-S

Weight: 40kg



## LED light

### SHERPA 100

Article: 03243-100



## Lightning package

### SHERPA150/200/300

1 rotating light and 3 working lights.  
Including assembly.

Article: 08478-1-3



## Lightning package

### SHERPA150/200/300

1 rotating light and 3 LED working lights.  
Including assembly.

Article: 08478-1-3LED

# OPTIONS AND ACCESSORIES



## Trailer coupling

### SHERPA 150/200/300

For shunting trailers etc. - Including assembly.  
Ball diameter  $\varnothing 50$ .

Article: 00375  
Ball diameter:  $\varnothing 50$   
Capacity: 200kg



## Ballast block

### SHERPA 150

By placing an extra ballast block on the backside of the machine it is possible to lift more weight. Including assembly.

Article: 15000-1-W-J12  
Weight: 47kg



## Ballast block

### SHERPA 200-300

By placing an extra ballast block on the backside of the machine it is possible to lift more weight. Including assembly.

Article: 00402  
Weight: 70kg



## Drive on plates

Article: 01375  
Length: 208cm

# OPTIONS AND ACCESSORIES



## Mounting plate

### **SHERPA 200/300**

For mounting attachments of the SHERPA 100 on a SHERPA 200 or SHERPA 300. Including hydraulic hoses.

Article: 06270

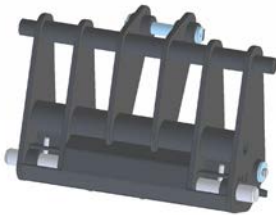


## Mounting plate KNIKMOPS® 130

### **SHERPA 200/300**

For mounting attachments of the KNIKMOPS®130 on a SHERPA 200 or 300. Including hydraulic hoses.

Article: 06265



## Mounting plate GIANT®

### **SHERPA 200/300**

Used for GIANT® attachments.

Article: 06418

# VACUUM UNITS & LIFTING TOOLS



## 40 m<sup>3</sup> vacuum BM40

Article: 06270  
Motor: Honda GX160



## Vacuum unit frame **SHERPA 150, 200 en 300**

For the use of vacuum tools.

Article: 07570-F

## 40 m<sup>3</sup> vacuum BS40-11, hydraulically driven **SHERPA 100 en 300**

For the use of vacuum tools.

Article: 07555



## Teli 60, vacuum lifting tool

Used for concrete and gravel tiles.  
Exclusive sucking cup.

Article: 08710  
Motor: Honda GX270

# VACUUM UNITS & LIFTING TOOLS



## Sucking cup holder

Including vacuum valve, vacuum manometer and certified lifting chain. Exclusive handles.

Article: 01785



## Sucking cup, for Stelcon® plates

Article: 01635  
Size: 60cm x 115cm  
Lifting capacity: max. 1400kg



## Sucking cup, for Stelcon® plates

Article: 01660  
Size: 60cm x 115cm  
Lifting capacity: max. 1800kg



## Sucking cup, for curbstones

Excluding spacers.

Article: 01425  
Size: 90cm x 8cm  
Lifting capacity: 140kg



## Sucking cup, for driveway blocks

Excluding spacers.

Article: 01500  
Size: 40cm x 20cm  
Lifting capacity: 140kg



## Sucking cup 350 x 450

Used for several concrete and gravel tiles.

Article: 01600  
Size: 35cm x 45cm  
Lifting capacity: 140kg

# SUCKING CUPS & CLAMPS



## Sucking cup RWS

Used for placing curbstones RWS.

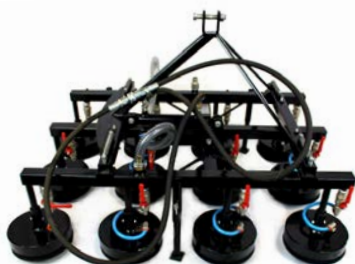
Article: 01525  
Size: 60cm x 22cm  
Lifting capacity: 140kg



## Sucking cup, sixfold

Used for lifting and placement of 4, 5, or 6 '30x30' tiles simultaneously.

Article: 01685



## Sucking cup, twelvefold

Used for lifting and placement of 12 '30x30' tiles simultaneously.

Article: 01675



## Hydraulic curbstone clamp HK0472

For lifting and placing various products made of concrete. Exclusive extension arm, handles and certified lifting hook.

Article: 02009  
Max. open: 72cm  
Min. closed: 4cm



## Handles

To extend the handles on the clamp.

Article: 02025



## Lifting hook

Max. lifting capacity is 200 kg.

Article: 02110

# SUCKING CUPS & CLAMPS



## Hydraulic grass-tile clamp

For transporting and placement of 2,3 or 4 grass-tiles, in a row. Exclusive extension arm.

Article: 00850



## Hydraulic grass-tile clamp

For transporting and placement of grass-tiles, 2x2 in block connection. Excluding extension arm, including certificated chain.

Article: 00855



## Curbstone-clamp

For setting and removing concrete tires. Certified lifting chain included.

Article: 02000



## Clamp for driveway blocks

Used for lifting and placement of driveway blocks . Including certified lifting chain.

Article: 02075



## Mechanical grass-tile clamp

Article: 02060





### Tile lifter

Article: 90925

### Tile lifter increased\* 10 cm higher

Article: 90925+



### Tile lifter, for two persons

Article: 90930



### Manhole cover lifter

Article: 09100