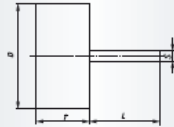
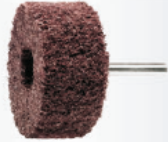




Industry

SFV, Flap wheels of fleece flaps, reg. Aluminium Oxide

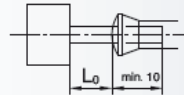
Ordering example: A2203050106106



Packing unit:
10 pcs. per type
Further dimensions, qualities and shank lengths on request.
A - reg. Aluminium Oxide

Description	Grits	D mm	T mm	S mm	L mm	n _{recom.} (1/min)	n _{max.} (1/min)	Product-Number	recommended for	
SFV 05010.06	A 106	50	10	6	40	6.000	11.000	A2203050106106	1 2 3 4 5 6 7 8 9 10	■
SFV 05020.06	A 104	50	20	6	40	6.000	11.000	A2203050206104	1 2 3 4 5 6 7 8 9 10	■
SFV 05020.06	A 106	50	20	6	40	6.000	11.000	A2203050206106	1 2 3 4 5 6 7 8 9 10	■
SFV 05030.06	A 104	50	30	6	40	6.000	11.000	A2203050306104	1 2 3 4 5 6 7 8 9 10	■
SFV 05030.06	A 106	50	30	6	40	6.000	11.000	A2203050306106	1 2 3 4 5 6 7 8 9 10	■
SFV 05030.06	A 107	50	30	6	40	6.000	11.000	A2203050306107	1 2 3 4 5 6 7 8 9 10	■
SFV 05040.06	A 104	50	40	6	40	6.000	11.000	A2203050406104	1 2 3 4 5 6 7 8 9 10	■
SFV 05040.06	A 106	50	40	6	40	6.000	11.000	A2203050406106	1 2 3 4 5 6 7 8 9 10	■
SFV 05040.06	A 107	50	40	6	40	6.000	11.000	A2203050406107	1 2 3 4 5 6 7 8 9 10	■
SFV 06030.06	A 104	60	30	6	40	5.000	9.000	A2203060306104	1 2 3 4 5 6 7 8 9 10	■
SFV 06030.06	A 106	60	30	6	40	5.000	9.000	A2203060306106	1 2 3 4 5 6 7 8 9 10	■
SFV 06030.06	A 107	60	30	6	40	5.000	9.000	A2203060306107	1 2 3 4 5 6 7 8 9 10	■
SFV 06040.06	A 104	60	40	6	40	5.000	9.000	A2203060406104	1 2 3 4 5 6 7 8 9 10	■
SFV 06040.06	A 106	60	40	6	40	5.000	9.000	A2203060406106	1 2 3 4 5 6 7 8 9 10	■
SFV 06040.06	A 107	60	40	6	40	5.000	9.000	A2203060406107	1 2 3 4 5 6 7 8 9 10	■
SFV 06050.06	A 104	60	50	6	40	5.000	9.000	A2203060506104	1 2 3 4 5 6 7 8 9 10	■
SFV 06050.06	A 106	60	50	6	40	5.000	9.000	A2203060506106	1 2 3 4 5 6 7 8 9 10	■
SFV 06050.06	A 107	60	50	6	40	5.000	9.000	A2203060506107	1 2 3 4 5 6 7 8 9 10	■
SFV 08040.06	A 104	80	40	6	40	4.000	7.000	A2203080406104	1 2 3 4 5 6 7 8 9 10	■
SFV 08040.06	A 106	80	40	6	40	4.000	7.000	A2203080406106	1 2 3 4 5 6 7 8 9 10	■
SFV 08050.06	A 104	80	50	6	40	4.000	7.000	A2203080506104	1 2 3 4 5 6 7 8 9 10	■
SFV 08050.06	A 106	80	50	6	40	4.000	7.000	A2203080506106	1 2 3 4 5 6 7 8 9 10	■
SFV 08050.06	A 107	80	50	6	40	4.000	7.000	A2203080506107	1 2 3 4 5 6 7 8 9 10	■

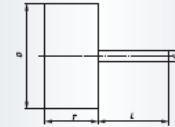
The stated maximum operating speed only applies to a maximum overhang L₀ of 20 mm. Other overhang dimensions must be calculated separately.



Industry

SFV, Flap wheels of fleece flaps, Silicon carbide

Ordering example: A2203020153207



Packing unit:
10 pcs. per type
Further dimensions, qualities and shank lengths on request.
C - Silicon carbide

Description	Grits	D mm	T mm	S mm	L mm	n _{recom.} (1/min)	n _{max.} (1/min)	Product-Number	recommended for	
SFV 02015.03	C 207	20	15	3	40	10.000	14.000	A2203020153207	1 2 3 4 5 6 7 8 9 10	■ NEW
SFV 04020.06	C 206	40	20	6	40	7.500	14.000	A2203040206206	1 2 3 4 5 6 7 8 9 10	■
SFV 04020.06	C 207	40	20	6	40	7.500	14.000	A2203040206207	1 2 3 4 5 6 7 8 9 10	■
SFV 04030.06	C 207	40	30	6	40	7.500	14.000	A2203040306207	1 2 3 4 5 6 7 8 9 10	■
SFV 05020.06	C 204	50	20	6	40	8.000	11.000	A2203050206204	1 2 3 4 5 6 7 8 9 10	■
SFV 05020.06	C 206	50	20	6	40	8.000	11.000	A2203050206206	1 2 3 4 5 6 7 8 9 10	■
SFV 05020.06	C 207	50	20	6	40	8.000	11.000	A2203050206207	1 2 3 4 5 6 7 8 9 10	■
SFV 05030.06	C 207	50	30	6	40	8.000	11.000	A2203050306207	1 2 3 4 5 6 7 8 9 10	■
SFV 05040.06	C 207	50	40	6	40	8.000	11.000	A2203050406207	1 2 3 4 5 6 7 8 9 10	■
SFV 06030.06	C 204	60	30	6	40	5.000	9.000	A2203060306204	1 2 3 4 5 6 7 8 9 10	■
SFV 06030.06	C 206	60	30	6	40	5.000	9.000	A2203060306206	1 2 3 4 5 6 7 8 9 10	■
SFV 06030.06	C 207	60	30	6	40	5.000	9.000	A2203060306207	1 2 3 4 5 6 7 8 9 10	■
SFV 06040.06	C 204	60	40	6	40	5.000	9.000	A2203060406204	1 2 3 4 5 6 7 8 9 10	■
SFV 06040.06	C 206	60	40	6	40	5.000	9.000	A2203060406206	1 2 3 4 5 6 7 8 9 10	■
SFV 06040.06	C 207	60	40	6	40	5.000	9.000	A2203060406207	1 2 3 4 5 6 7 8 9 10	■
SFV 06050.06	C 207	60	50	6	40	5.000	9.000	A2203060506207	1 2 3 4 5 6 7 8 9 10	■
SFV 08040.06	C 204	80	40	6	40	4.000	7.000	A2203080406204	1 2 3 4 5 6 7 8 9 10	■
SFV 08040.06	C 206	80	40	6	40	4.000	7.000	A2203080406206	1 2 3 4 5 6 7 8 9 10	■
SFV 08040.06	C 207	80	40	6	40	4.000	7.000	A2203080406207	1 2 3 4 5 6 7 8 9 10	■
SFV 08050.06	C 204	80	50	6	40	4.000	7.000	A2203080506204	1 2 3 4 5 6 7 8 9 10	■
SFV 08050.06	C 206	80	50	6	40	4.000	7.000	A2203080506206	1 2 3 4 5 6 7 8 9 10	■
SFV 08050.06	C 207	80	50	6	40	4.000	7.000	A2203080506207	1 2 3 4 5 6 7 8 9 10	■

The stated maximum operating speed only applies to a maximum overhang L₀ of 20 mm. Other overhang dimensions must be calculated separately.

