

LOW-HEIGHT TELESCOPIC CYLINDERS

Extended stroke for low clearance applications



ENERPAC 

▼ RLT-Series, Low-Height Telescopic Cylinder



- **Single-acting, load return**
- **Nitrocarburized surface treatment inside and out provides corrosion protection**
- **For use in confined spaces: machinery positioning, tool fastening**
- **Mounting bolt holes for easy fixing**
- **3% side-load of full capacity**
- **Design safety factor complies with ASME B30.1 & EN1494**
- **CR-400 coupler for compatibility with standard product**
- **High-Alloy steel for maximum strength.**

For longer cylinder strokes in confined spaces



RLT-Series, Low-Height Telescopic Cylinders

Enerpac compact, low-height telescopic cylinders are available with two or three pistons, and can lift loads up to 40 mm in a single movement.

Nitrocarburized surface treatment inside and out provides unparalleled sideload resistance and corrosion protection for safe use in the harshest conditions. The longer stroke length of telescopic cylinders will save you time and simplify projects by moving a load a greater distance and eliminating the use of temporary cribbing.



Multi-Stage Cylinders

1st Stage: maximum load capacity at lower stroke.

2nd Stage: extended stroke with lower capacity than the 1st stage.

Final Stage: maximum stroke extension with lowest capacity.



| Cylinder Capacity at Maximum Stroke ton (kN) | Maximum Stroke (mm) | Model Number | Collapsed Height | Extended Height | Oil Capacity (cm ³) |
|---|------------------------|--------------|------------------|-----------------|------------------------------------|
| | | | A (mm) | B (mm) | |
| 4,4 (43) | 17 | RLT-40 | 45,0 | 62,0 | 21 |
| 4,4 (43) | 23 | RLT-41 | 54,0 | 77,0 | 51 |
| 11,4 (111) | 18 | RLT-110 | 54,5 | 72,5 | 48 |
| 11,4 (111) | 40 | RLT-111 | 89,0 | 129,0 | 241 |
| 23,7 (232) | 27 | RLT-230 | 75,0 | 102,0 | 150 |
| 23,7 (232) | 32 | RLT-231 | 96,0 | 128,0 | 303 |
| 31,5 (309) | 29 | RLT-311 | 89,0 | 118,0 | 224 |
| 50,6 (496) | 26 | RLT-501 | 96,0 | 122,0 | 283 |
| 74,1 (727) | 26 | RLT-741 | 114,0 | 140,0 | 426 |

Low-Height Telescopic Cylinders, Single-Acting



Assisted Return Pumps with Venturi Valve Technology

To improve productivity and plunger retraction,

Energac offers valve configurations designed to accelerate your cylinder retraction speeds, ZU4 and ZE-Series pumps feature **Venturi Valve Technology** to facilitate the faster return of single-acting load and spring return cylinders. See energac.com for details.



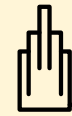
4 Way Manifold assembly complete with gauges

Offering ease of portability and convenience with an ergonomic robust design,

ready for use. Energac's CR400 female couplers on all ports allow the manifold to be quickly connected to up to 4 cylinders. Glycerine filled, 700 bar gauges allow operators to work safely. All protected by the robust protection frame.

| Manifold Type (Used for cylinders) | Model Number |
|---------------------------------------|---------------|
| 4x Single-acting | AMGC41 |
| 4x Double-acting | AMGC42 |

RLT Series



Capacity:

4,4 - 74,1 ton

Stroke:

17 - 40 mm

Maximum Operating Pressure:

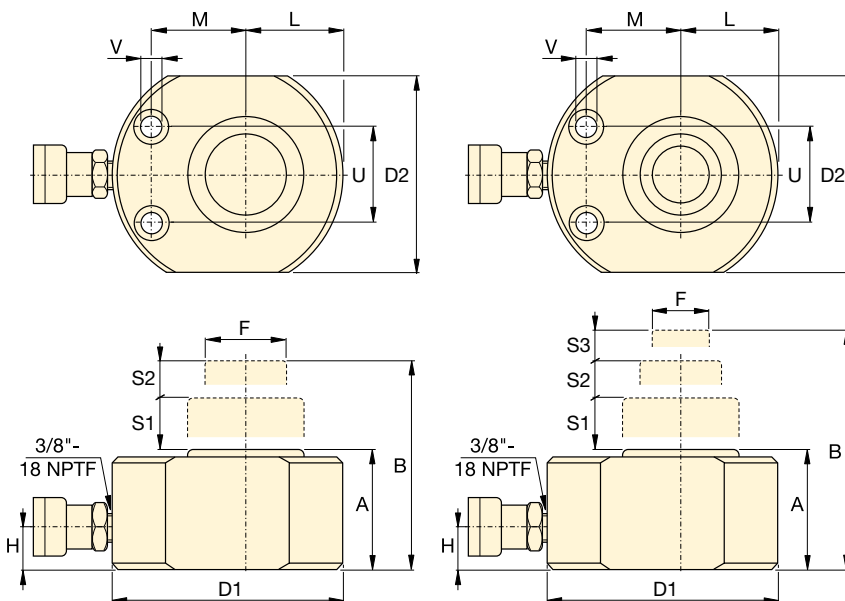
700 bar



Hoses

Energac offers a complete line of high quality hydraulic hoses. To ensure the integrity of your system, specify only Energac

hydraulic hoses.



RLT-Cylinders

Mounting Hole Dimensions (mm)

| Model Number | Bolt Distance | Hole Diameter | Counter Bore Diameter | Counter Bore Depth |
|----------------|---------------|---------------|-----------------------|--------------------|
| | U | V | | |
| RLT-40 | 37 | 6,5 | 11 | 7 |
| RLT-41 | 50 | 9,0 | 14 | 9 |
| RLT-110 | 50 | 9,0 | 14 | 9 |
| RLT-111 | 76 | 13,0 | 20 | 13 |
| RLT-230 | 67 | 13,0 | 20 | 13 |
| RLT-231 | 76 | 6,5 | 11 | 7 |
| RLT-311 | 76 | 13,0 | 20 | 13 |
| RLT-501 | 76 | 6,5 | 11 | 7 |
| RLT-741 | 117 | 9,0 | 14 | 9 |

| 1st Stage | | 2nd Stage | | 3rd Stage | | Outside Diameter D1 x D2 (mm) | Plunger Diameter F (mm) | Bottom to Advance Port H (mm) | Plunger to Base L (mm) | Plunger to Mounting Hole M (mm) | (kg) | Model Number |
|----------------------|-------------------|----------------------|-------------------|----------------------|-------------------|----------------------------------|----------------------------|----------------------------------|---------------------------|------------------------------------|----------|----------------|
| Capacity ton (kN) | Stroke S1 (mm) | Capacity ton (kN) | Stroke S2 (mm) | Capacity ton (kN) | Stroke S3 (mm) | | | | | | | |
| 11,4 (111) | 11 | 4,4 (43) | 6 | - | - | 83 x 56 | 25 | 20 | 29,0 | 33 | 1,8 | RLT-40 |
| 23,7 (232) | 11 | 11,4 (111) | 7 | 4,4 (43) | 5 | 102 x 80 | 25 | 20 | 41,0 | 39 | 3,1 | RLT-41 |
| 23,7 (232) | 11 | 11,4 (111) | 7 | - | - | 102 x 80 | 38 | 20 | 41,0 | 39 | 3,0 | RLT-110 |
| 74,1 (727) | 16 | 31,5 (309) | 13 | 11,4 (111) | 11 | 165 x 140 | 38 | 25 | 70,5 | 66 | 13,1 | RLT-111 |
| 50,6 (496) | 16 | 23,7 (232) | 11 | - | - | 140 x 114 | 57 | 20 | 58,0 | 56 | 7,6 | RLT-230 |
| 94,7 (929) | 16 | 50,6 (496) | 10 | 23,7 (232) | 6 | 178 x 162 | 57 | 29 | 89,0 | 70 | 17,3 | RLT-231 |
| 74,1 (727) | 16 | 31,5 (309) | 13 | - | - | 165 x 140 | 60 | 25 | 70,5 | 66 | 13,0 | RLT-311 |
| 94,7 (929) | 16 | 50,6 (496) | 10 | - | - | 178 x 162 | 78 | 29 | 89,0 | 70 | 17,3 | RLT-501 |
| 143,5 (1407) | 16 | 74,1 (727) | 10 | - | - | 216 x 196 | 95 | 35 | 108,0 | 78 | 30,4 | RLT-741 |



HYDRAULIC PUMPS

Enerpac hydraulic pumps are available in over 1000 different configurations. Whatever your application needs are for speed, control, intermittent or heavy-duty, Enerpac has the right solution for you. Featuring Hand, Battery, Electric, Air and Gasoline-powered models, Enerpac offers the most comprehensive pump line available.



P-Series, Hand Pumps



XC-Series, Battery-Powered Pumps



XA-Series, Air Driven Pumps



ZC-Series, Battery-Powered Pumps



ZU4-Series, Portable Electric Pumps



ZE-Series, Electric Pumps

9618GB © Enerpac 11-2018. Subject to change without notice.

www.enerpac.com

ENERPAC 
POWERFUL SOLUTIONS. GLOBAL FORCE.