

ENVIRONMENT / STORAGE



20-82 litre steel Spill Trays/Rackings 87-88



60 litre steel Spill Trays / Rackings 89-91



200 litre steel Sump Trays/Rackings 92-102, 110



Shelf Sumps / Shelvin with Sumps 103-105



1000 litre steel Sump Trays 106-107



Ground Protection Spill Decks/Filling Points 108-109, 124



Hazardous Materials Depots 111-116



Steel Sump Trays with PE-Inlay / Polyethylene Sump Pallets 117-121



Stainless steel Sump Trays 122-123



Gas Cylinder Storage 126-130



Safety Cabinets 130



Shelf Containers / Depot Containers 132-135



Fireproof Containers 136



Heating Chambers 137-139



Collection Points 140-141



CORRECT STORAGE OF WATER-POLLUTING SUBSTANCES

German Legislation

WHG (Federal Water Act) / **AwSV** (Ordinance for facilities that handle substances hazardous to water)

The **WHG** states that facilities that work with water-polluting substances or use them (i.e. filling, storage, manufacturing, treatment etc.) must be designed and operated in such a manner as to ensure that groundwater is not contaminated. Any such facilities may only be built and operated after a positive evaluation of a suitability assessment carried out by the authority responsible.

AwSV (federal legislation; came into force 01.08.2017) Ordinance for facilities that handle substances hazardous to water

This is the first standardized ruling for Germany; it replaces all 16 individual state regulations (VawS) previously implemented.

Approvals That Underline Quality and Expertise

Our Sump Trays are manufactured in compliance with StawaR (technical requirements for sump trays made of steel and with a capacity of up to 1000 litres) or have a National Technical Approval granted by the German approval body DIBt when sump trays deviate from StawaR. Every unit is tested for leakage.

European Legislation

GHS / REACH

GHS: Globally Harmonized System of Classification and Labelling of Chemicals

Further information can be found here: https://www.unece.org/trans/danger/publi/ghs/ghs_welcome_e.html

REACH (Regulation (EC) No 1907/2006)

Registration

Evaluation



Authorisation and


Restriction of Chemicals

Further information can be found here: http://ec.europa.eu/environment/chemicals/reach/reach_en.htm

Retention Capacity

Please check the safety requirements and regulations for your area! Unlike transport, there is no international legislation that controls the **storage** of hazardous materials!

Flammable Liquids (classified according to GHS / REACH)				
Hazard Class	Hazard Pictogram	Criteria	H Code	Hazard Category
Extremely flammable		Flash point < 23°C, and initial boiling point ≤ 35 °C	H224	GHS 1
Highly flammable		Flash point < 23°C, and initial boiling point > 35°C	H225	GHS 2
Flammable		Flash point ≥ 23°C ≤ 60°C	H226	GHS 2

Hazardous to the Aquatic Environment (classified according to GHS / REACH)			
Hazard Class	Hazard Pictogram	H Code	Hazard Category
Acute		H400	GHS 1
Chronic		H410	GHS 1
Chronic		H411	GHS 2
Chronic		H412	GHS 3
Chronic		H413	GHS 4

STEEL SPILL TRAYS FOR SMALL CANS **TYPE KGW**



KGW/M



KGW



Especially for the storage of small cans

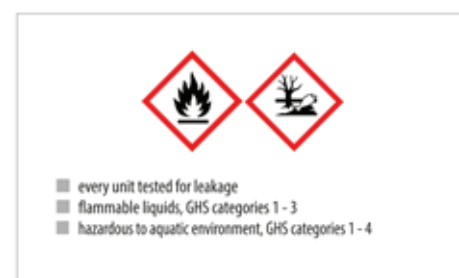
- retention capacity 20 - 62 litres
- spill trays of 3 mm galvanized steel sheet

Types available

- KGW** - without deck with punched holes
- KGW/M** - with deck with punched holes



KGW 2 with Tilting Canister Stand type KAH-25 (see page 116)



	Dimensions (l x w x h) in mm	Ret. capacity in l without/with deck	Load capacity in kg	Weight in kg without/with deck
KGW 1 / KGW 1/M	940 x 370 x 60	20/19	150	12 / 18
KGW 2 / KGW 2/M	940 x 470 x 60	25/24	150	14 / 23
KGW 3 / KGW 3/M	1000 x 600 x 70	39/38	150	19 / 29
KGW 4 / KGW 4/M	1390 x 600 x 60	46/44	150	25 / 38
KGW 5 / KGW 5/M	1850 x 600 x 60	62/60	150	33 / 51

STEEL SPILL TRAYS FOR SMALL CANS ON PALLETS **TYPE KGW-P**



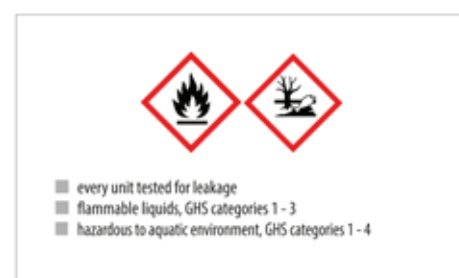
On a Euro pallet 1200x800 mm: KGW-P 1, KGW-P 1 incl. deck with punched holes and KGW-P 2 incl. deck with punched holes

The safe and mobile way to store canisters and small cans on Euro or chemical pallets

- retention capacity 27 - 82 litres
- spill trays of 3 mm galvanized steel sheet
- spill trays can be combined and are an exact fit for Euro pallets and chemical pallets

Types available

- KGW-P** - without deck with punched holes
- KGW-P/M** - with deck with punched holes



	Dimensions (l x w x h) in mm	Ret. capacity in l without/with deck	Load capacity in kg	Weight in kg without/with deck
KGW-P 1 / KGW-P 1/M	600 x 400 x 120	27/26	50	11 / 16
KGW-P 2 / KGW-P 2/M	800 x 600 x 120	55/54	100	19 / 28
KGW-P 3 / KGW-P 3/M	1200 x 800 x 100	91/89	200	32 / 47
KGW-P 4 / KGW-P 4/M	1200 x 600 x 120	82/80	200	27 / 40

Finish:

galvanized

SMALL CAN SHELVINGS WITH SUMPS TYPE SERIES 3000



Basic shelf S 3017-4E



Extension shelf S 3018-4E



Basic shelf S 3019-4E



Extension shelf S 3020-4E



Basic shelf S 3021-4E



Basic shelf S 3022-4E

Safe storage of small cans

- sump trays made of 3 mm steel sheet
- plug-in system, simple assembly
- 1000 x 600 x 2000 mm (WxDxH)
- 4 levels, load capacity per level 150 kg (uniformly distributed load)

Accessories

- additional level

Stainless steel sump trays also available!



- every unit tested for leakage
- flammable liquids, GHS categories 1 - 3
- hazardous to aquatic environment, GHS categories 1 - 4



Basic and Extension shelf S 3023-4E



Basic and Extension shelf S 3024-4E

Design	Dimensions shelf (w x d x h) in mm	Dimensions sump tray (w x d x h) in mm	Retention capacity in l	Weight in kg
3017-4E Basic shelf with 4 levels (3 galvanized grids, 1 galvanized spill tray)	1000 x 600 x 2000	-	1 x 30	69
3018-4E Extension shelf with 4 levels (3 galvanized grids, 1 galvanized spill tray)	1000 x 600 x 2000	-	1 x 30	61
3019-4E Basic shelf with 4 levels (4 galvanized spill trays)	1000 x 600 x 2000	-	4 x 30	97
3020-4E Extension shelf with 4 levels (4 galvanized spill trays)	1000 x 600 x 2000	-	4 x 30	89
3021-4E Basic shelf with 4 levels (4 galvanized grids) + galvanized sump tray	1200 x 800 x 2260	1200 x 800 x 360	1 x 243	113
3022-4E Basic shelf with 4 levels (4 galvanized spill trays) + galvanized sump tray	1200 x 800 x 2260	1200 x 800 x 360	1 x 243	90
3023-4E Basic shelf plus extension, each 4 levels (2x4 galvanized grids) + galvanized sump tray	2400 x 800 x 2150	2400 x 800 x 250	1 x 279	188
3024-4E Basic shelf plus extension, each 4 levels (2x4 galvanized spill trays) + galvanized sump tray	2400 x 800 x 2150	2400 x 800 x 250	1 x 279	143

Finish: galvanized

SUMP TRAYS TYPE AW 60



AW 60-3/M



AW 60-2/M



AW 60-1



AW 60-2

Storage of max. 6 x 60 litre drums or 60 l drums in combination with canisters and small cans

- construction made of 3 mm steel sheet
- 100 mm ground leeway

Types available

AW 60

- without grid

AW 60/M

- with galvanized grid
- load capacity 1000 kg/m²

Accessories (see page 116)

- Drum Supports FA 60, galvanized
- Clip-on Rotating Support RA 60 for rotating the drums, galvanized
- Can Shelves GR, galvanized
- Tilting Canister Stand KAH
- 2 swivel + 2 fixed polyamide castors, one swivel castor with brake – construction height 125 mm



AW 60-2/M with Tilting Canister Stand KAH-60 (see page 116)



AW 60-3/M with Drum Support FA 60-3 (see page 116)

	Max. no. of 60 litre drums	Dimensions (l x w x h) in mm	Retention capacity in l	Weight paint. / galv. in kg
AW 60-1/M	2	800 x 500 x 290	72	34 / 37
AW 60-2/M	4	900 x 800 x 220	81	46 / 49
AW 60-3/M	6	1300 x 800 x 205	103	58 / 62
AW 60-1	-	800 x 500 x 290	73	28 / 30
AW 60-2	-	900 x 800 x 220	82	34 / 36
AW 60-3	-	1300 x 800 x 205	103	41 / 44



- every unit tested for leakage
- flammable liquids, GHS categories 1 - 3
- hazardous to aquatic environment, GHS categories 1 - 4

Finish:

RAL 2000

RAL 3000

RAL 5012

RAL 6011

RAL 7005

hot-dip galvanized

MOBILE SUMP TRAYS TYPE AW 60 SR



AW 60-1 SR



AW 60-1 SRF

	Max. no. of drums no. x litre	Dimensions (l x w x h) in mm incl. handle	Dim. tray only (l x w x h) in mm	Retention capacity in l	Weight in kg paint. / galv.
AW 60-1 SR	2 x 60	940 x 500 x 1075	800 x 500 x 415	72	39 / 42
AW 60-1 SRF	1 x 60	940 x 500 x 1075	800 x 500 x 415	72	49 / 52

Mobile storage of 60 litre drums

- construction made of 3 mm steel sheet
- galvanized grid (load capacity 1000 kg/m²)
- 2 swivel + 2 fixed polyamide castors Ø 100 mm, one swivel castor with brake – construction height 125 mm, handle

Types available

AW 60-1 SR

- storage of max. 2 x 60 litre drums in an upright position

AW 60-1 SRF

- storage of 1 x 60 litre drum in a horizontal position
- drum Support FA 60-1, galvanized, for 60 l drums, for horizontal storage and filling, kit form

MOBILE SUMP TRAYS WITH PERFORATED PANEL TYPE LPW 60



LPW 60-3

Dispense oils etc. from 60 litre drums, wherever necessary - mobile, safe, simple

- 3 mm steel sheet sump tray
- galvanized grid (load capacity 1000 kg/m²)
- sturdy rear panel, perforated, galvanized steel sheet with 10 x 10 mm square holes, straight row pattern, 38 mm spacing allows tool holders to be positioned as required
- hot-dip galvanized handles
- set of polyamide castors: 2 fixed and 2 swivel, (1 swivel castor with a brake) Ø 100 mm, construction height 125 mm

Accessories

- galvanized tool deposit
- galvanized drip tray with fixture to hook up pump nozzle



LPW 60-1



LPW 60-2

	Max. no. of drums x l	Dimensions (l x w x h) in mm	Retention capacity in l	Weight paint. / galv. in kg
LPW 60-1	1 x 60	570 x 590 x 1775	67	52 / 54
LPW 60-2	2 x 60	570 x 890 x 1685	73	64 / 66
LPW 60-3	2 x 60	875 x 500 x 1685	73	56 / 58

Valid for all products on this page:



- every unit tested for leakage
- flammable liquids, GHS categories 1 - 3
- hazardous to aquatic environment, GHS categories 1 - 4

Finish:

RAL 2000

RAL 3000

RAL 5012

RAL 6011

RAL 7005

hot-dip galvanized

FILLING POINTS



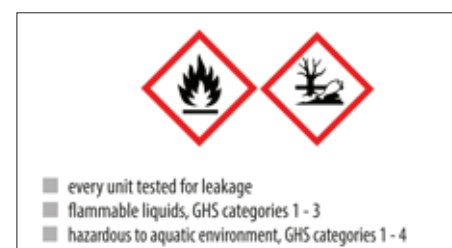
Horizontal storage and filling. For max. 9 x 60 litre drums/canisters or 60 litre drums/canisters in combination with small cans

Modular design, choose from:

- **Sump trays AW 60** made of 3 mm steel sheet, 100 mm ground leeway
- **Grids GR**, galvanized (load capacity 1000 kg/m²)
- **Canister Stands AG**, galvanized, in kit form, can be stacked max. 3 high
- **Drum Supports AB** (2 pieces per canister), galvanized, movable
- **Drum support FA 60-A** for 1 x 60 litre drum, galvanized
- **Clip-on Rotating Support RA 60-A**, galvanized, for rotating 60 litre drums



		Max. no. of 60 litre drums	Dimensions (l x w x h) in mm	Retention capacity in l	Load capacity in kg	Weight in kg paint. / galv.
Sump tray	AW 60-1		800 x 500 x 290	73	--	28 / 30
Grid	GR 60-1		780 x 420 x 30	--	--	-- / 6
Shelf	AG 60-1	1	515 x 515 x 555	--	65	-- / 9
Sump tray	AW 60-2		900 x 800 x 220	82	--	34 / 38
Grid	GR 60-2		820 x 780 x 30	--	--	-- / 12
Shelf	AG 60-2	2	915 x 515 x 555	--	130	-- / 10
Sump tray	AW 60-3		1300 x 800 x 205	103	--	42 / 48
Grid	GR 60-3		1220 x 780 x 30	--	--	-- / 18
Shelf	AG 60-3	3	1315 x 515 x 555	--	200	-- / 13
Canister Stand	AB		105 x 510 x 150	--	--	-- / 2
Drum Support	FA 60-A	1	270 x 510 x 60	--	--	-- / 2
Clip-on Rotating Support	RA 60-A	1	270 x 510 x 80	--	--	-- / 4



Finish:

RAL 2000

RAL 3000

RAL 5012

RAL 6011

RAL 7005

galvanized

SUMP TRAYS TYPE AM / AO



AM-2



AO-4/A



AM-4/B

Storage of max. 4 x 200 litre drums or 200 l drums in combination with 60 litre drums and/or canisters and small cans

- construction made of 3 mm steel sheet
- 100 mm ground leeway
- conical construction
- strengthened by reinforced edging on two sides
- for use with a pallet truck or forklift truck

Types available

AM

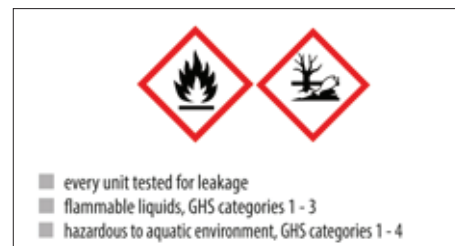
- with galvanized grid (load capacity 1000 kg/m²)

AO

- without grid
- can be stacked one inside another

Accessories (see page 116)

	Max. no. of 200 litre drums	Dimensions (l x w x h) in mm	Retention capacity in l	Weight in kg paint. / galv.
AM-1	1	800 x 800 x 545	243	59 / 63
AM-2	2	1200 x 800 x 415	250	71 / 75
AM-4/A	4	1200 x 1200 x 335	309	88 / 93
AM-4/B	4	2400 x 800 x 285	318	114 / 120
AO-1	-	800 x 800 x 545	241	47 / 51
AO-2	-	1200 x 800 x 415	265	53 / 57
AO-4/A	-	1200 x 1200 x 335	308	61 / 66
AO-4/B	-	2400 x 800 x 285	318	78 / 84



MOBILE SUMP TRAYS TYPE AW-F



AW-F 2 with fixture and tension belt



AW-F 1

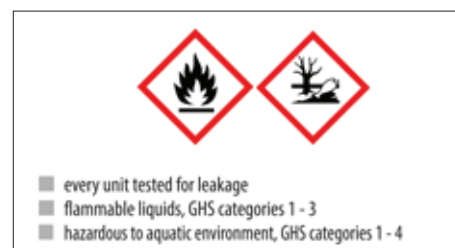
Mobile storage of max. 2 x 200 litre drums

- construction made of 3 mm steel sheet
- galvanized grid (load capacity 1000 kg/m²)
- reinforced edging as grid support
- 2 swivel + 2 fixed polyamide castors
Ø 180 mm, one swivel castor with brake
– construction height 225 mm, handle

Accessories (see page 116)

- fixture and tension belt

	Max. no. of 200 litre drums	Dimensions (l x w x h) in mm incl. handle	Dim. tray only (l x w x h) in mm	Retention capacity in l	Weight in kg paint. / galv.
AW-F 1	1	870 x 800 x 1110	800 x 800 x 695	243	69 / 73
AW-F 2	2	1280 x 800 x 1110	1200 x 800 x 570	250	78 / 82



Finish:

RAL 2000

RAL 3000

RAL 5012

RAL 6011

RAL 7005

hot-dip galvanized

SUMP TRAYS TYPE WM / WO



Storage of max. 4 x 200 litre drums or 200 l drums in combination with 60 litre drums and/or canisters and small cans

- construction made of 3 mm steel sheet
- 100 mm ground leeway
- for use with a pallet truck or forklift truck

Types available

WM

- with galvanized grid (load capacity 1000 kg/m²)

WO

- without grid

Accessories (see page 116)



WM-4/200

Certified carbon neutral manufacturing is our contribution to achieving the goals for sustainable water management



WM-4/400



WO-4/200

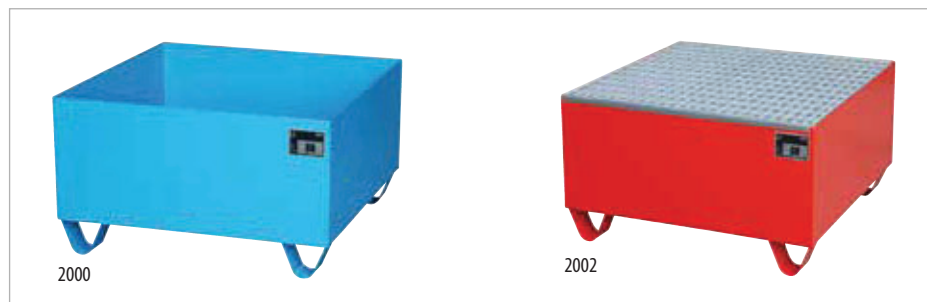
	Max. no. of 200 litre drums	Dimensions (l x w x h) in mm	Retention capacity in l	Weight in kg
WM-2/200	2	1200 x 800 x 365	243	72
WM-4/200	4	1200 x 1200 x 290	255	91
WM-4/400	4	1200 x 1200 x 415	440	101
WO-2/200	-	1200 x 800 x 360	243	51
WO-4/200	-	1200 x 1200 x 285	255	60
WO-4/400	-	1200 x 1200 x 415	444	76



- every unit tested for leakage
- flammable liquids, GHS categories 1 - 3
- hazardous to aquatic environment, GHS categories 1 - 4

Finish: **galvanized**

SUMP TRAYS TYPE SERIES 2000



Storage of max. 4 x 200 litre drums or 200 l drums in combination with 60 litre drums and/or canisters and small cans

- construction made of 3 mm steel sheet
- with/without galvanized grid (load capacity 1000 kg/m²)
- with/without supporting feet (100 mm ground leeway)

Type available

Type .../SW

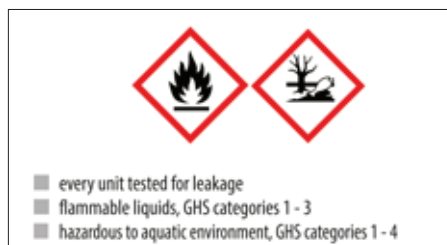
- splash protection walls on 3 sides, made of galvanized steel sheet, height 1000 mm

Accessories (see page 116)

- Drum Supports type FA, galvanized
- Clip-on Rotating Supports type RA for rotating the drums, galvanized
- Can Shelves type GR, galvanized



2018/SW (with splash protection walls)



	Max. no. of 200 litre drums	Finish	Grid	Supporting feet 100 mm ground leeway	Dimensions (l x w x h) in mm	Retention capacity in l	Weight in kg paint. / galv.
2000 / 2001	-	painted / galvanized	-	✓	800 x 800 x 460	222	43 / 46
2002 / 2003	1	painted / galvanized	✓	✓	800 x 800 x 460	221	57 / 60
2008 / 2009	-	painted / galvanized	-	-	1200 x 800 x 260	243	47 / 50
2010 / 2011	2	painted / galvanized	✓	-	1200 x 800 x 260	240	66 / 71
2016 / 2017	-	painted / galvanized	-	✓	1200 x 800 x 360	243	48 / 53
2018 / 2019	2	painted / galvanized	✓	✓	1200 x 800 x 360	240	69 / 73
2026 / 2027	-	painted / galvanized	-	-	1200 x 1200 x 185	259	57 / 63
2028 / 2029	4	painted / galvanized	✓	-	1200 x 1200 x 185	255	86 / 92

Finish:	RAL 2000	RAL 3000	RAL 5012	RAL 6011	RAL 7005	hot-dip galvanized
---------	----------	----------	----------	----------	----------	--------------------

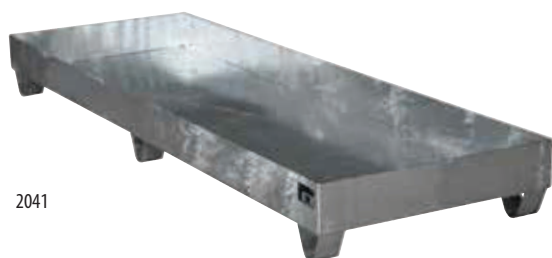
SUMP TRAYS TYPE SERIES 2000



2030



2032



2041



2042



2048

► Accessories (see page 116)



2050

	Max. no. of 200 litre drums	Finish	Grid	Supporting feet 100 mm ground leeway	Dimensions (l x w x h) in mm	Retention capacity in l	Weight in kg paint. / galv.
2030 / 2031	-	painted / galvanized	-	✓	1200 x 1200 x 285	259	59 / 65
2032 / 2033	4	painted / galvanized	✓	✓	1200 x 1200 x 285	255	81 / 86
2040 / 2041	-	painted / galvanized	-	✓	2400 x 800 x 250	279	70 / 75
2042 / 2043	4	painted / galvanized	✓	✓	2400 x 800 x 250	273	124 / 132
2048 / 2049	-	painted / galvanized	-	✓	1800 x 800 x 275	245	58 / 62
2050 / 2051	3	painted / galvanized	✓	✓	1800 x 800 x 275	235	86 / 90

Finish:

RAL 2000

RAL 3000

RAL 5012

RAL 6011

RAL 7005

hot-dip galvanized

MOBILE SUMP TRAYS **TYPE SERIE 2000**



S 2004

Mobile storage of 200 litre drums

- Construction made of 3 mm steel sheet
- galvanized grid (load capacity 1000 kg/m²)
- 2 swivel + 2 fixed polyamide castors
Ø 100 mm, one swivel castor with brake
– construction height 225 mm, handle

Accessories

- fixture and tension belt for 1, 2 or 3 drums
- Drum Supports Type FA
- Clip-on Rotating Support Type RA



S 2020 with fixture and tension belt (accessories)

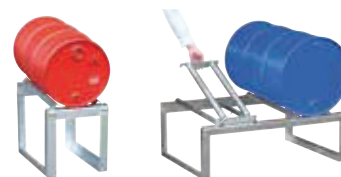


S 2021 with Drum Support type FA 200 (accessories)



S 2050 SR

► Accessories (see page 116)



- every unit tested for leakage
- flammable liquids, GHS categories 1 - 3
- hazardous to aquatic environment, GHS categories 1 - 4

	Max. no. of 200 litre drums	Finish	Dimensions incl. handle (l x w x h) in mm	Dim. tray only (l x w x h) in mm	Retention capacity in l	Weight in kg paint. / galv.
2004 / 2005	1	painted / galvanized	920 x 800 x 1115	800 x 800 x 615	221	68 / 72
2020 / 2021	2	painted / galvanized	1320 x 800 x 1115	1200 x 800 x 515	243	78 / 82
2050 SR / 2051 SR	3	painted / galvanized	1920 x 800 x 1115	1800 x 800 x 435	240	98 / 103

Finish:

RAL 2000

RAL 3000

RAL 5012

RAL 6011

RAL 7005

hot-dip galvanized

MOBILE SUMP TRAYS WITH PERFORATED PANEL **TYPE LPW 200**



LPW 200-2 with tool deposit and drip tray (accessories)

Dispense oils etc. from 200 litre drums, wherever necessary - mobile, safe, simple

- 3 mm steel sheet sump tray
- galvanized grid (load capacity 1000 kg/m²)
- hot-dip galvanized handles
- set of polyamide castors: 2 fixed and 2 swivel, (1 swivel castor with a brake) Ø 180 mm, construction height 225 mm

Types available

LPW 200-1 bis -3

- sturdy rear panel, perforated, galvanized steel sheet with 10 x 10 mm square holes, straight row pattern, 38 mm spacing allows tool holders to be positioned as required
- castors - Ø 180 mm, construction height 225 mm

LPW 200-4

- with perforated tool board
- assembly board on the sump tray
- with tension belt
- castors - Ø 100 mm - construction height 125 mm

Accessories (for LPW 200-1 to -3)

- galvanized tool deposit
- galvanized drip tray with fixture to hook up pump nozzle



LPW 200-3

LPW 200-1

LPW 200-4

	Max. no. of (Drums x l)	Dimensions (l x w x h) in mm	Retention capacity in l	Weight in kg paint. / galv.
LPW 200-1	1x 200	870 x 890 x 2110	222	100 / 104
LPW 200-2	2x 200	870 x 1290 x 2015	243	122 / 126
LPW 200-3	2x 200	1280 x 800 x 2015	243	110 / 114
LPW 200-4	1x 200	1450 x 800 x 1195	243	100 / 108



- every unit tested for leakage
- flammable liquids, GHS categories 1 - 3
- hazardous to aquatic environment, GHS categories 1 - 4

Finish:

RAL 2000

RAL 3000

RAL 5012

RAL 6011

RAL 7005

hot-dip galvanized

SPLINE SUMPS TYPE PWE





Storage of max. 4 x 200 litre drums or 200 l drums in combination with 60 litre drums

- Construction made of 2 mm steel sheet
- drums stand on galvanized splines
- 100 mm ground leeway
- can be stacked



PWE 200-4 and 400-4 stacked

	Max. no. of 200 litre drums	Dimensions (l x w x h) in mm	Retention capacity in l	Load capacity in kg	Weight in kg paint. / galv.
PWE 200-2	2	1200 x 800 x 360	245	480	49 / 52
PWE 200-4	4	1200 x 1200 x 285	261	960	59 / 63
PWE 400-4	4	1200 x 1200 x 410	440	960	68 / 73



- every unit tested for leakage
- flammable liquids, GHS categories 1 - 3
- hazardous to aquatic environment, GHS categories 1 - 4

Finish:	RAL 2000	RAL 3000	RAL 5012	RAL 6011	RAL 7005	hot-dip galvanized
---------	----------	----------	----------	----------	----------	--------------------

SUMP TRAYS TYPE ECO-S





A conical construction optimized for logistics; for the storage of max. 4 x 200 l drums or 200 l drums in combination with 60 litre drums and/or canisters and small cans

- construction made of 2 mm steel sheet
- 100 mm ground leeway
- galvanized grid (load capacity 650 kg/m²)
- conical construction
- can be stacked one inside another (grid separate)
- for use with a pallet truck or forklift truck
- shipping unit: 15 pieces per Euro pallet

ECO-S 4/200 - shipping unit

ECO-S 2/200

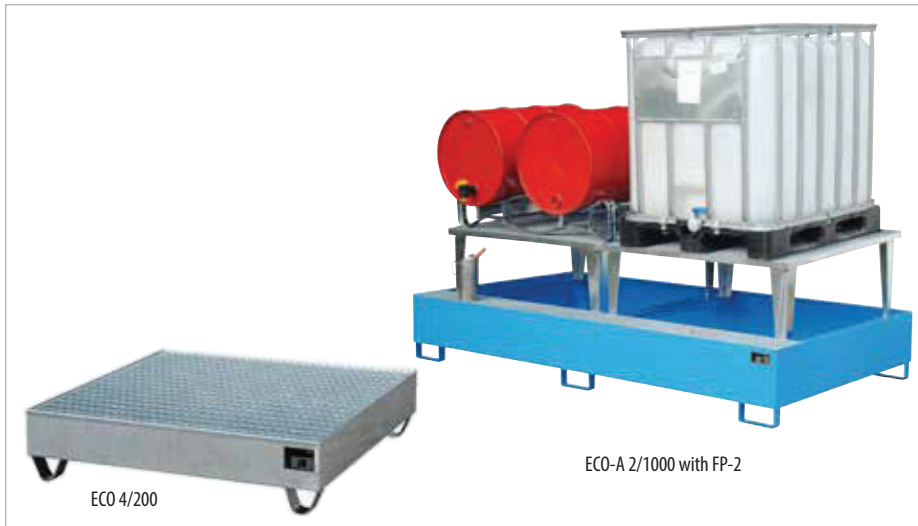
	Max. no. of 200 litre drums	Dimensions (l x w x h) in mm	Retention capacity in l	Weight in kg galvanized
ECO-S 2/200	2	1200 x 800 x 360	232	48
ECO-S 4/200	4	1200 x 1200 x 280	240	70
ECO-S 4/400	4	1200 x 1200 x 430	440	80



- every unit tested for leakage
- flammable liquids, GHS categories 1 - 3
- hazardous to aquatic environment, GHS categories 1 - 4

Finish:	hot-dip galvanized
---------	--------------------

SUMP TRAYS TYPE ECO



Storage of max. 4 x 200 litre drums or 2 x 1000 litre containers (IBCs) or 200 l drums or an IBC in combination with 60 litre drums and/or canisters and small cans

- construction made of 2 mm steel sheet
- 100 mm ground leeway
- galvanized grid (load capacity 1000 kg/m²)

Types available

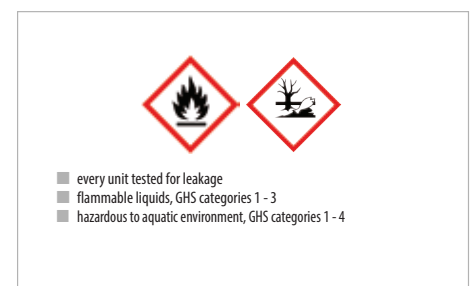
ECO

- without raised platform

ECO-A

- with raised platform

	Max. no. of 200 litre drums/1000 litre IBCs	Dimensions in mm (l x w x h)	Retention capacity in l	Weight painted / galv. in kg
ECO 1/200	1 / -	800 x 800 x 455	222	44 / 46
ECO 2/200	2 / -	1200 x 800 x 360	240	54 / 57
ECO 4/200	4 / -	1200 x 1200 x 285	261	68 / 71
ECO 4/400	4 / -	1200 x 1200 x 410	435	77 / 80
ECO 1/1000	- / 1	1460 x 1460 x 620	1100	141 / 147
ECO 2/1000	- / 2	2650 x 1300 x 435	1128	185 / 195
ECO-A 1/1000	- / 1	1460 x 1460 x 1083	1100	150 / 158
ECO-A 2/1000	- / 2	2650 x 1460 x 863	1128	233 / 244



SUMP TRAYS TYPE AW 8-12



AW-12



AW-8

	Max. no. of 200 litre drums	Dimensions (l x w x h) in mm	Retention capacity in l	Weight in kg paint. / galv.
AW-8	8	2650 x 1300 x 210	340	190 / 200
AW-10	10	3250 x 1300 x 195	395	226 / 238
AW-12	12	3850 x 1300 x 200	468	260 / 274

Storage of max. 12 x 200 litre drums or 200 l drums in combination with 60 litre drums and/or canisters and small cans

- construction made of 3 mm steel sheet
- 100 mm ground leeway
- galvanized grid (load capacity 1000 kg/m²)

Accessories

- Drum Supports type FA, galvanized
- Clip-on Rotating Supports type RA for rotating the drums, galvanized
- Can Shelves type GR, galvanized



Finish:

RAL 2000

RAL 3000

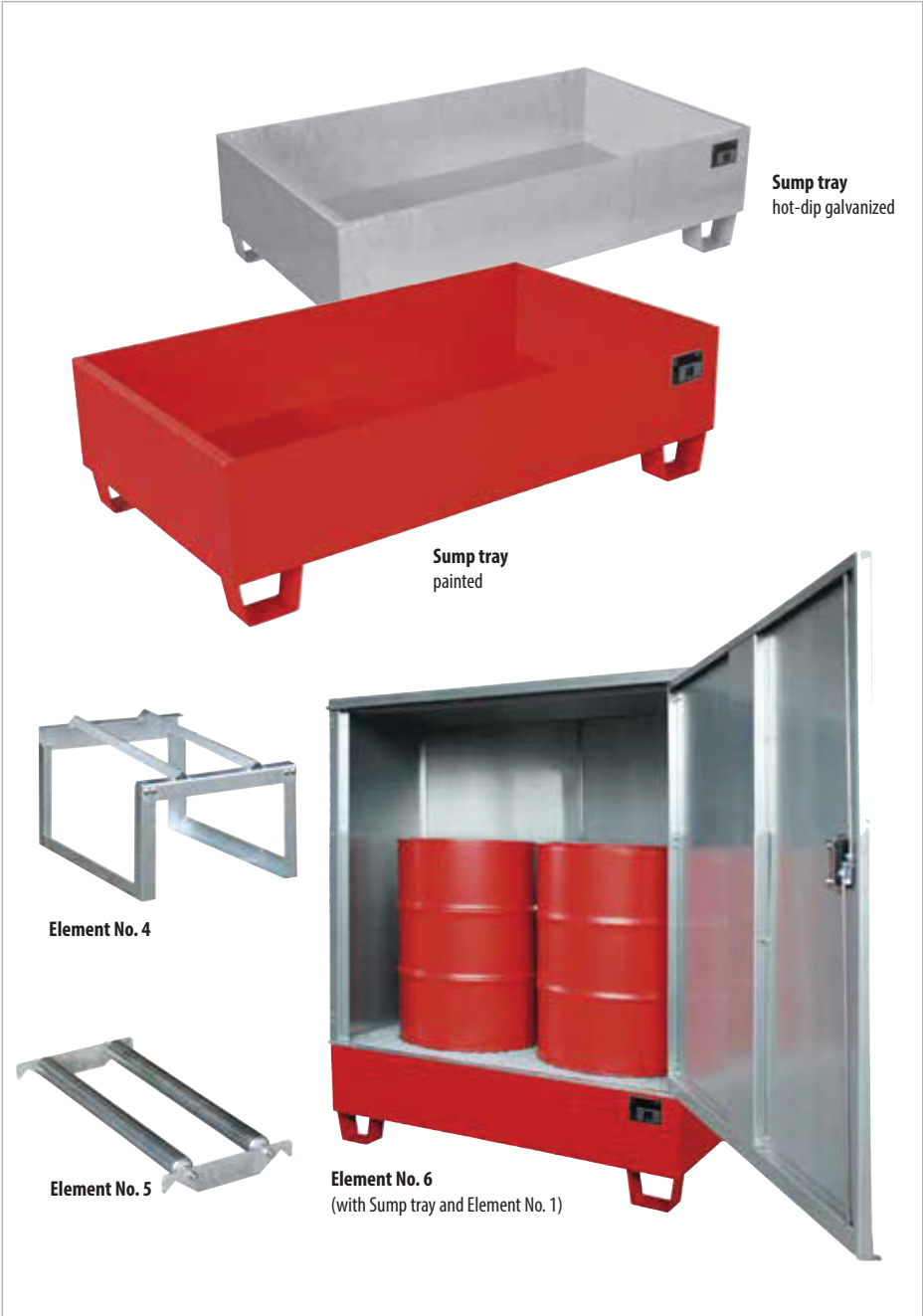
RAL 5012

RAL 6011

RAL 7005

hot-dip galvanized

MODULAR SUMP TRAYS TYPE MAW



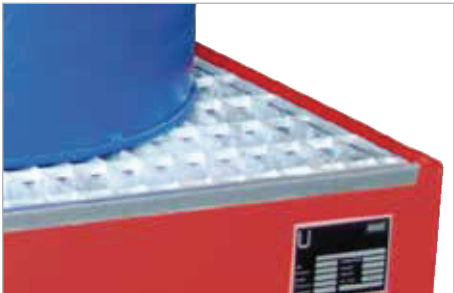
Sump tray
hot-dip galvanized

Sump tray
painted

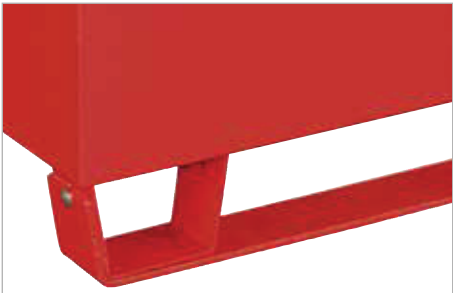
Element No. 4

Element No. 5

Element No. 6
(with Sump tray and Element No. 1)



Element No. 1




Element No. 3

	Dimensions (l x w x h) in mm	Weight in kg paint. / galv.
MAW Sump tray	1295 x 735 x 365	50 / 54
Element No. 1 grid including supports	715 x 1230 x 30	- / 19
Element No. 2 galvanized handle + castors	635 x 60 x 950	- / 7
Element No. 3 runners	1275 x 80 x 95	14 / 15
Element No. 4 galvanized Drum Support FA 200-1	540 x 775 x 445	- / 13
Element No. 5 galvanized Clip-on Rotating Support RA 200	320 x 720 x 75	- / 7
Element No. 6 galvanized surround	1295 x 740 x 1450	- / 91

Storage of max. 2 x 200 litre drums or 200 l drums in combination with 60 litre drums and/or canisters and small cans

Modular design, choose from:

- **Sump tray**
construction made of 3 mm steel sheet, 100 mm ground leeway, retention capacity 242 litres
- **Element No. 1**
grid including supports (load capacity 1000 kg/m²)
- **Element No. 2**
2 swivel + 2 fixed polyamide castors Ø 100 mm, one swivel castor with brake; construction height 125 mm, handle galvanized
- **Element No. 3**
2 runners
- **Element No. 4**
Drum Support FA 200-1 for horizontal storage of 1 x 200 litre drum, in kit form
- **Element No. 5**
Clip-on Rotating Support RA 200 for rotating the drums



- every unit tested for leakage
- flammable liquids, GHS categories 1 - 3
- hazardous to aquatic environment, GHS categories 1 - 4

- **Element No. 6**
surround with a door that can be locked

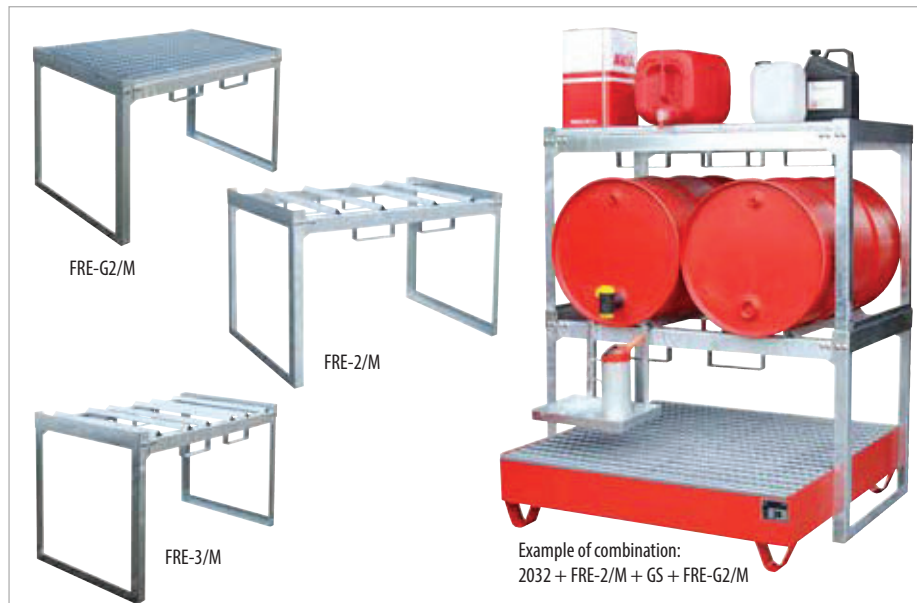


- every unit tested for leakage
- liquids with a flashpoint > 55° C
- hazardous to aquatic environment, GHS categories 1 - 4



Sump tray mit Element No. 2

SHELF UNITS FOR DRUMS AND SMALL CANS TYPE FRE



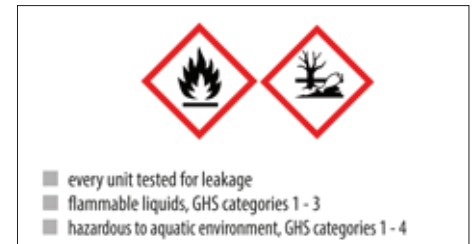
Horizontal storage and filling. For max. 4 x 200 litre drums or in combination with 60 litre drums and/or canisters and small cans

Modular design, choose from:

- **Drum Shelf FRE/M** for 60 or 200 litres drums, hot-dip galvanized, with fork pockets, construction screwed together, can be stacked max. 2 high, **kit form**
- **Can Shelf FRE-G/M** for canisters and/or cans, hot-dip galvanized, with grid and fork pockets, can be stacked max. 2 high, **kit form**
- **Can Stand GS**
- **Clip-on Rotating Supports RA** for rotating 60 or 200 litre drums
- **Sump tray** from series 2000, 1200 x 800 mm and 1200 x 1200 mm, with/without grid

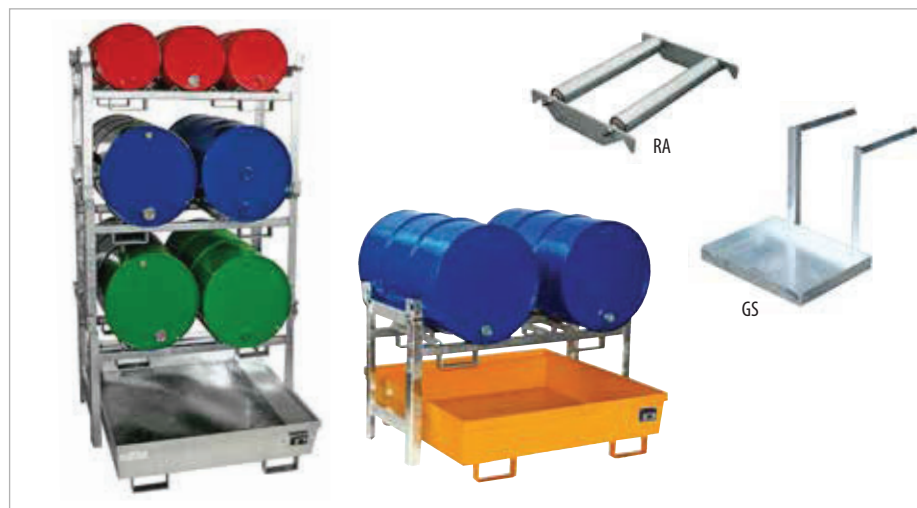
Combine these versatile modular units and plan your storage area to meet your needs.

Valid for all products on this page:



		Max. no. of drums x l	Dimensions (l x w x h) appr. in mm	Load capacity in kg	Weight in kg galv.
Drum Shelf	FRE-1/M	1 x 200	920 x 785 x 805	500	26
Can Shelf	FRE-G1/M		920 x 785 x 805	500	36
Sump tray	2016/2017/2018/2019		800 x 1200 x 360		
Drum Shelf	FRE-2/M	2 x 200	1320 x 785 x 805	500	31
Drum Shelf	FRE-3/M	3 x 60	1320 x 785 x 805	500	35
Can Shelf	FRE-G2/M		1320 x 785 x 805	500	43
Sump tray	2030/2031/2032/2033		1200 x 1200 x 285		
Can Stand	GS		400 x 300 x 350	10	5
Clip-on Rotating Support	RA 60		295 x 490 x 80		4
Clip-on Rotating Support	RA 200		320 x 720 x 80		7

DRUM SHELVES TYPE FR



Combination examples: FRA-2 + 2x FR-2 + FR-3

FRA-2 + FR-2

Horizontal storage and filling; for max. 6 x 200 litre drums or 200 litre drums in combination with 60 litre drums

Modular design, choose from:

- **Drum Shelves FR** for 60/200 litre drums, galvanized, can be stacked max. 3 high, stacking corners with crane eyes
- **Can Shelf for small cans FRG** with galvanized grid for small cans, hot-dip galvanized, can be stacked max. 3 high, stacking corners with crane eyes
- **Sump Trays FRA** made of 3 mm steel sheet, 100 mm ground leeway, painted or hot-dip galvanized finish
- **Grid GR-FRA**, galvanized, for Sump Tray type FRA
- **Can Stand GS**
- **Clip-on Rotating Supports RA** for rotating 60/200 litre drums

		Max. no. of drums no. x litres	Retention capacity in l	Dimensions (l x w x h) in mm	Load capacity in kg	Weight in kg paint. / galv.
Drum Shelf	FR-1	1 x 200		980 x 580 x 850	200	-- / 37
Sump tray	FRA-1		265	1200 x 800 x 415		52 / 56
Drum Shelf	FR-2	2 x 200		1380 x 580 x 850	400	-- / 43
Can Shelf	FRG			1380 x 580 x 850		
Sump tray	FRA-2		308	1200 x 1200 x 335		61 / 66
Drum Shelf	FR-3	3 x 60		1380 x 580 x 850	400	-- / 47
Can Shelf	FRG			1380 x 580 x 850		
Sump tray	FRA-3		308	1200 x 1200 x 335		61 / 66

Finish:

RAL 2000

RAL 3000

RAL 5012

RAL 6011

RAL 7005

hot-dip galvanized

DRUM SHELVES WITH SUMP TRAYS TYPE SERIE 3000



Basic shelf 3000
+ Extension shelf 3001



Basic shelf 3002



Basic shelf 3004



Basic shelf 3006



Basic shelf 3008



Basic shelf 3010



3013



3014



3015



3016



- every unit tested for leakage
- flammable liquids, GHS categories 1 - 3
- hazardous to aquatic environment, GHS categories 1 - 4

- 3012 Clip-on rotating support for 1 x 60 litre drum
- 3013 Clip-on rotating support for 1 x 200 litre drum
- 3014 Retainer bar, galvanized
- 3015 Can Stand, galvanized
- 3016 Corner guard

Store drums horizontally or in an upright position and dispense from them. For max. 8 x 200 litre drums or 12 x 60 litre drums

- sump trays aus 3 mm Stahlblech
- with/without galvanized grid
- 100 mm ground leeway
- retention capacity 220 litres
- upright frame
- cross beams, powder coated
- drum supports for 60 or 200 litre drums, galvanized

Type		Max. no. of drums / position	Shelf (w x d x h) in mm	Sump tray (w x d x h) in mm	Weight in kg
3000	Basic shelf with 2 levels, sump tray without a grid	4 x 200 litre drums horizontal	1510 x 800 x 2000	1330 x 1200 x 260	134
3001	Extension shelf with 2 levels, sump tray without a grid	4 x 200 litre drums horizontal	1430 x 800 x 2000	1330 x 1200 x 260	117
3002	Basic shelf with 3 levels, sump tray without a grid	6 x 200 litre drums horizontal	1510x 800 x 2500	1330 x 1200 x 260	159
3003	Extension shelf with 3 levels, sump tray without a grid	6 x 200 litre drums horizontal	1430 x 800 x 2500	1330 x 1200 x 260	138
3004	Basic shelf with 3 levels, sump tray without a grid	9 x 60 litre drums horizontal	1510 x 800 x 2000	1330 x 1200 x 260	170
3005	Extension shelf with 3 levels, sump tray without a grid	9 x 60 litre drums horizontal	1430 x 800 x 2000	1330 x 1200 x 260	153
3006	Basic shelf with 4 levels, sump tray without a grid	12 x 60 litre drums horizontal	1510 x 800 x 2500	1330 x 1200 x 260	202
3007	Extension shelf with 4 levels, sump tray without a grid	12 x 60 litre drums horizontal	1430x 800 x 2500	1330 x 1200 x 260	182
3008	Basic shelf with 1 level, sump tray with a grid	2 x 200 litre drums horizontal/4 x 200 litre drums upright	1510 x 800 x 2000	1330 x 1200 x 260	144
3009	Extension shelf with 1 level, sump tray with a grid	2 x 200 litre drums horizontal/4 x 200 litre drums upright	1430 x 800 x 2000	1330 x 1200 x 260	127
3010	Basic shelf with 2 levels, sump tray with a grid	4 x 200 litre drums horizontal/4 x 200 litre drums upright	1510 x 800 x 2500	1330 x 1200 x 260	170
3011	Extension shelf with 2 levels, sump tray with a grid	4 x 200 litre drums horizontal/4 x 200 litre drums upright	1430 x 800 x 2500	1330 x 1200 x 260	161

Finish:

Sump trays hot-dip galvanized

Upright frames similar to RAL 5010

Cross beams similar to RAL 2004

PALLET RACKING TYPE PR



Use pallet racking with shelf sumps to comply with legislation relating to the storage of water-polluting substances.

Modular design, choose from:

- Upright Frame **PR-S**, powder coated
- Cross Beam **PR-T**, powder coated, can be fitted at intervals of 50 mm
- Retainer Bar **PR-D**, galvanized
- **galvanized grid** as storage level (base level only), mesh size 30 x 60 mm, fitted over the cross beams using 4 brackets, load capacity 1000 kg/m²
- **Corner Guards** (required when racking stands in an exposed area or in aisles/thoroughfares)
- **Shelf Sumps RW** and **Suspended Sumps EHW**

Bezeichnung		Dimensions) (l x d x h) in mm	Load capacity in kg
Upright Frame	PR-S 2000	T 1100 x H 2000	----
Upright Frame	PR-S 3000	T 1100 x H 3000	----
Upright Frame	PR-S 4000	T 1100 x H 4000	----
Cross Beam	PR-T 1800	L 1800	2500
Cross Beam	PR-T 2200	L 2200	2100
Cross Beam	PR-T 2700-1	L 2700	2400
Cross Beam	PR-T 2700-2	L 2700	3000
Retainer Bar for Cross Beam length 1800 mm	PR-D 1800	L 1800	----
Retainer Bar for Cross Beam length 2200 mm	PR-D 2200	L 2200	----
Retainer Bar for Cross Beam length 2700 mm	PR-D 2700	L 2700	----
Gridstorage level		865 x 1230 x 30	1000 kg/m ²
Corner Guard		----	----



Accessories: Shelf Drum Pallets RP



PR Set 1 for max. 12 x 200 litre drums
consists of the following components:

- 2 x Upright Frame PR-S 2000
- 2 x Cross Beam PR-T 2700-1
- 2 x Retainer Bar PR-D 2700
- 1 x Shelf Sump RW-GR 2700-1
- 2 x Corner Guard (Accessories)



PR Set 2 for max. 12 x 200 litre drums
consists of the following components:

- 2 x Upright Frame PR-S 3000
- 4 x Cross Beam PR-T 2700-1
- 2 x Retainer Bar PR-D 2700
- 1 x Shelf Sump RW 2700-1
- 2 x Corner Guard (Accessories)



PR Set 3 for max. 4 x 1000-l-IBC
consists of the following components:

- 2 x Upright Frame PR-S 3000
- 4 x Cross Beam PR-T 2700-2
- 2 x Retainer Bar PR-D 2700
- 1 x Shelf Sump RW 2700-3
- 2 x Corner Guard (Accessories)

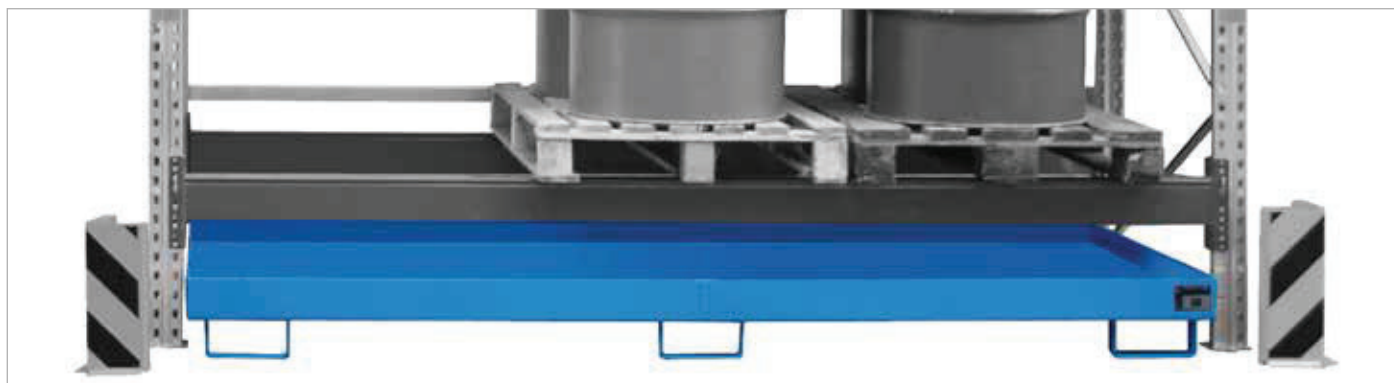
Finish:

Upright frames similar to RAL 5010

Cross beams similar to RAL 2004

Sump trays hot-dip galvanized

SHELF SUMPS TYPE RW



Shelf Sump RW 2700-1



Shelf Sump RW-GR 2700-3



Shelf Sump RW-GR 2700-1



Shelf Sump RW 2200-2



Shelf Sump RW 2200-1

Integrate Shelf Sumps into existing shelving systems – a cost-effective and efficient way of bringing them up to standard and ensuring they meet the legal requirements

- Construction made of 3 mm steel sheet

Types available

RW

- Shelf Sumps without grid
- 100 mm ground leeway

RW-GR

- Shelf Sumps with galvanized grid (load capacity 1000 kg/m²)
- 100 mm ground leeway

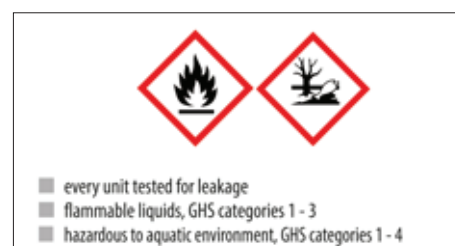
Individual construction on request

- for pick up using a straddle stacker



Shelf Sump RW 1800

without Grid	with Grid	For Cross Beam length in mm	Dimensions in mm (l x d x h)	Ret. cap. in l without/with Grid	Weight paint. in kg without/with Grid	Weight galv. in kg without/with Grid
RW 1800	RW-GR 1800	1800	1750 x 1300 x 250	331/324	80/134	86/141
RW 2200-1	RW-GR 2200-1	2200	2150 x 1300 x 225	338/329	91/163	98/172
RW 2200-2	RW-GR 2200-2	2200	2150 x 1300 x 505	1115/1105	136/204	147/215
RW 2700-1	RW-GR 2700-1	2700	2650 x 1300 x 210	345/338	106/190	114/200
RW 2700-2	RW-GR 2700-2	2700	2650 x 1300 x 300	674/670	123/200	133/212
RW 2700-3	RW-GR 2700-3	2700	2650 x 1300 x 435	1135/1124	148/226	160/239
RW 3300-1	RW-GR 3300-1	3300	3250 x 1300 x 195	373/360	126/232	136/244
RW 3300-2	RW-GR 3300-2	3300	3250 x 1300 x 265	675/663	141/247	152/261
RW 3300-3	RW-GR 3300-3	3300	3250 x 1300 x 380	1162/1150	166/265	179/280
	RW-GR 3600-3	3600	3550 x 1300 x 355	-----/1142	----/278	----/294



SUSPENDED SUMPS TYPE EHW



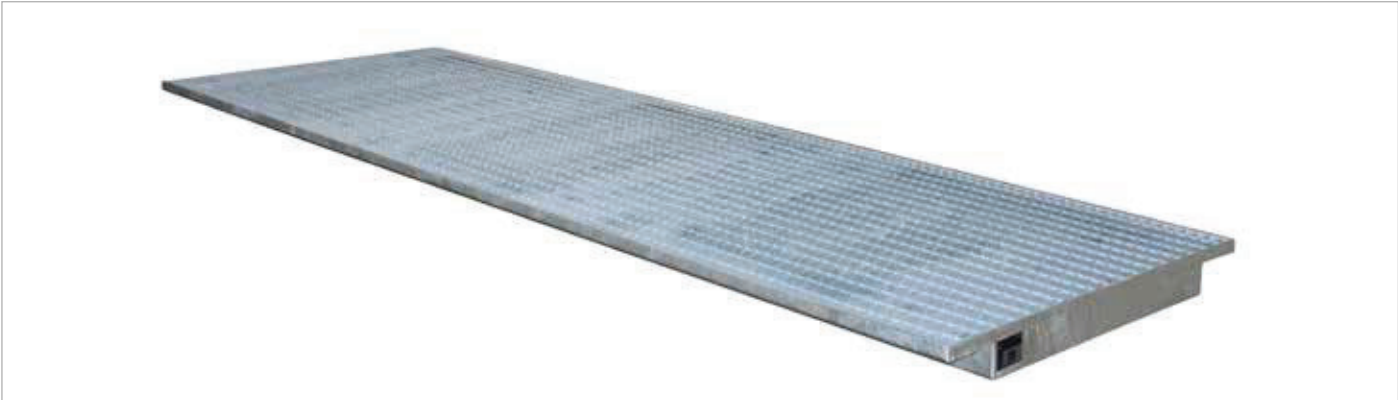
Suspended Sump Type EHW 1800



Suspended Sump Type EHW 2200



Suspended Sump Type EHW 2700



Suspended Sump Type EHW 3600

	for Cross Beam length	Dimensions	Retention capacity	Weight in kg
	in mm	in mm (l x d x h)	in l	paint. / galv.
EHW 1800	1800	1750 x 1250/915 x 160	261	105 / 111
EHW 2200	2200	2150 x 1250/915 x 140	282	125 / 132
EHW 2700	2700	2650 x 1250/915 x 130	325	151 / 159
EHW 3300	3300	3250 x 1250/915 x 110	339	186 / 195
EHW 3600	3600	3550 x 1250/915 x 115	387	197 / 207

Integrate suspended sumps into existing shelving systems – a cost-effective and efficient way of bringing them up to standard and ensuring they meet the legal requirements

- construction made of 3 mm steel sheet
- galvanized grid (load capacity 1000 kg/m²)

Individual construction on request



- every unit tested for leakage
- flammable liquids, GHS categories 1 - 3
- hazardous to aquatic environment, GHS categories 1 - 4

SUMP TRAYS TYPE AW



AW 450



AW 800

Storage of max. 10 x 200 litre drums or 3 x 1000 litre containers (IBCs) or 200 l drums or IBCs in combination with 60 litre drums and/or canisters and small cans

- construction made of 3 mm steel sheet
- 100 mm ground leeway
- galvanized grid (load capacity 1000 kg/m²)

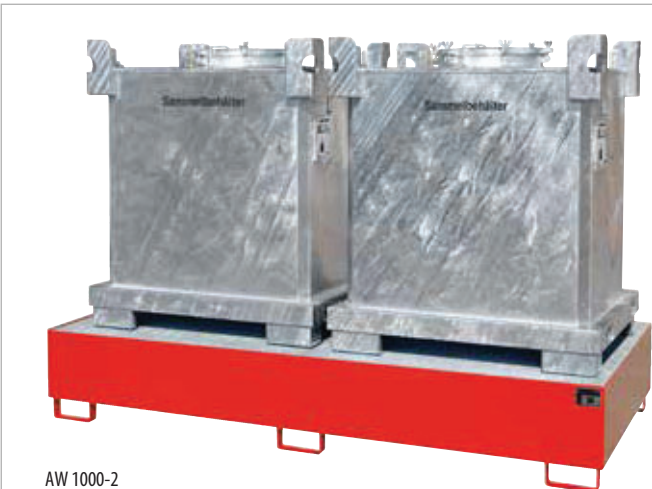
Type available

Type AW/SW

- with splash protection wall on 3 sides, made of galvanized steel sheet, height 1000 mm

Accessories (see page 116)

Individual construction on request



AW 1000-2



AW 1000-10F



AW 1000



AW 1000-3/SW (with splash protection wall)

	Max. no. of 200 litre drums/1000 litre IBCs	Dimensions (l x w x h) in mm	Retention capacity in l	Weight in kg paint. / galv.
AW 450	4 / -	1460 x 1460 x 355	525	144 / 155
AW 800	4 / -	1460 x 1460 x 525	885	165 / 178
AW 1000	- / 1	1460 x 1460 x 630	1100	180 / 194
AW 1000-2	- / 2	2650 x 1300 x 435	1135	226 / 239
AW 1000-10F	10 / 2	2690 x 1650 x 375	1186	274 / 294
AW 1000-3	- / 3	3850 x 1300 x 340	1160	294 / 310



- every unit tested for leakage
- flammable liquids, GHS categories 1 - 3
- hazardous to aquatic environment, GHS categories 1 - 4

SUMP TRAYS TYPE AWA



AWA 1000



AWA 1000-2 + FP-2

Storage of max. 3 x 1000 litre containers (IBCs) or IBCs in combination with 60/200 litre drums and/or canisters and small cans

- construction made of 3 mm steel sheet
- 100 mm ground leeway
- with raised platform or
- combination of raised platform and galvanized grid (load capacity 1000 kg/m²)

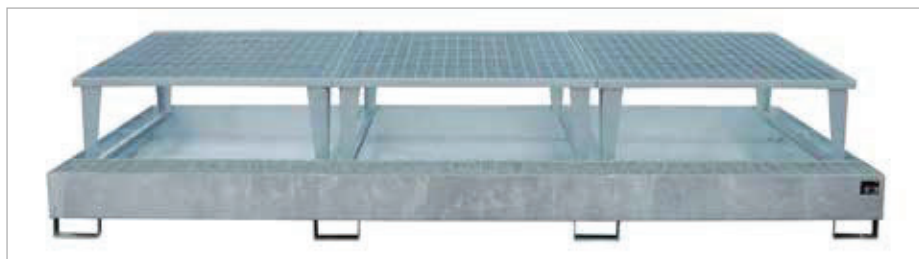
Type available

Type AWA/SW

- with splash protection walls on 3 sides, made of galvanized steel sheet, height 1000 mm

Accessories (see page 116)

Individual construction on request



AWA 1000-3



AWA 21

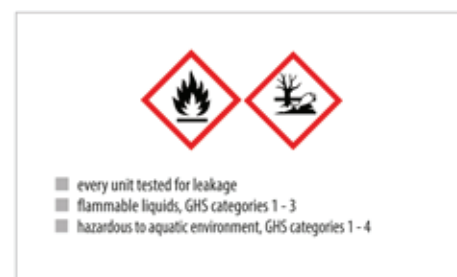


AWA 31 + FP-2



AWA 32/SW (with splash protection wall)

► **Accessories** (see page 116)



	No. of raised platforms/grids	Max. no. of 1000 litre IBCs	Dimensions (l x w x h) in mm	Retention capacity in l	Weight in kg paint. / galv.
AWA 1000	1 / -	1	1460 x 1460 x 1090	1100	190 / 201
AWA 1000-2	2 / -	2	2650 x 1460 x 865	1140	282 / 296
AWA 1000-3	3 / -	3	3850 x 1460 x 780	1165	385 / 403
AWA 21	1 / 1	2	2650 x 1460 x 865	1140	272 / 291
AWA 31	1 / 2	3	3850 x 1460 x 780	1170	336 / 360
AWA 32	2 / 1	3	3850 x 1460 x 780	1170	362 / 387

Finish:

RAL 2000

RAL 3000

RAL 5012

RAL 6011

RAL 7005

hot-dip galvanized

GROUND PROTECTION SPILL TRAYS TYPE BSW 21-24



8 x BSW + 6 x AR + 1 x AE + 3 x KV + 10 x WV (accessories: Drum Trolley type FP-V, Drum Shelves type FR)

Ground protection spill trays for storage and filling; can be driven on

- max. surface load 5000 kg/m²
- max. wheel load 500 kg
- pallet and forklift truck accessible

Modular design, choose from:

- **Ground Protection Spill Trays BSW 21-24**
construction height 78 mm, with galvanized grid
- **Access Ramps AR**
- **Access Corner Piece AE**
- **Cross-shaped Connector KV**, galvanized
- **Tray Connecting Strip WV**, galvanized

	Ground Protection Spill Trays				Access Ramps			Access Corner Pieces	Cross-shaped Connectors	Tray Connecting Strips		
	BSW 21	BSW 22	BSW 23	BSW 24	AR 21	AR 22	AR 23	AE 24	KV 24	WV 21	WV 22	WV 23
Dimensions (l x w x h) in mm	1350x1350x78	1900x1350x78	2850x1350x78	2850x1900x78	1350x500x78	1900x500x78	2850x500x78	500x500x78	Ø 120 height 16	1330x55x30	1880x55x30	2850x55x30
Retention capacity in l	135	179	269	378	-	-	-	-	-	-	-	-
Weight in kg	115	160	238	347	31	42	63	6	0,5	2	3	4

GROUND PROTECTION SPILL TRAYS TYPE BSW 121-126



8 x BSW + 6 x AR + 1 x AE + 3 x KV + 10 x WV (Accessories: Drum Trolley FP-V, Drum Shelves FR)

Ground protection spill trays for storage and filling; can be driven on

- similar to BSW 21-24 but a different height.
- Construction height: 123 mm

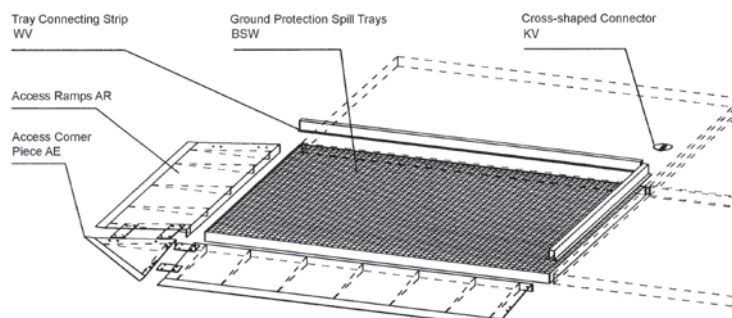
Accessories for BSW 21-24 and BSW 121-126

- metal skirting to connect to the wall, galvanized
- for more accessories (see page 116)

Valid for all products on this page:



- every unit tested for leakage
- flammable liquids, GHS categories 1 - 3
- hazardous to aquatic environment, GHS categories 1 - 4



	Tray Connecting Strip				Cross-shaped Connector
	WV 121	WV 122	WV 123	WV 124	KV 24
Length in mm	500	1000	2000	2500	Ø 120 H 16

	Ground Protection Spill Trays						Access Ramps				Access Corner Piece
	BSW 121	BSW 122	BSW 123	BSW 124	BSW 125	BSW 126	AR 121	AR 122	AR 123	AR 124	AE 124
Dimensions (l x w x h) in mm	500x500x123	1000x500x123	1000x1000x123	2000x1000x123	2500x500x123	2500x1000x123	500x1120x123	1000x1120x123	2000x1120x123	2500x1120x123	1120x1120x123
Retention capacity in l	28	55	113	226	140	263	-	-	-	-	-
Weight in kg	25	46	80	155	111	187	26	50	105	131	23

Finish:

galvanized

On request:

stainless steel

GROUND PROTECTION SPILL TRAY FOR USE UNDER MACHINES **BSW**



For use under machines, bespoke design, according to the customer's specification



- every unit tested for leakage
- flammable liquids, GHS categories 1 - 3
- hazardous to aquatic environment, GHS categories 1 - 4

GROUND PROTECTION FLOOR ELEMENTS



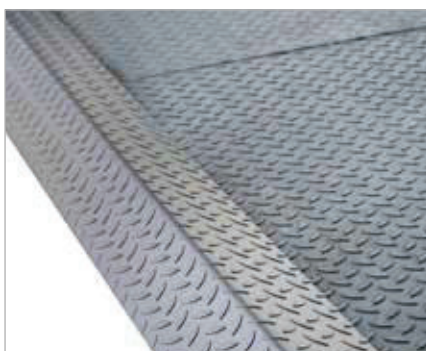
Ground protection floor elements with a recess for a column and with a threshold ramp

German legislation (VAwS and WHG) stipulates that facilities that handle waterpolluting substances i.e. loading or unloading operations etc. must be equipped with adequate containment protection. Ground Protection Floor Elements fulfil these requirements and also help prevent mechanical damage to the floor.

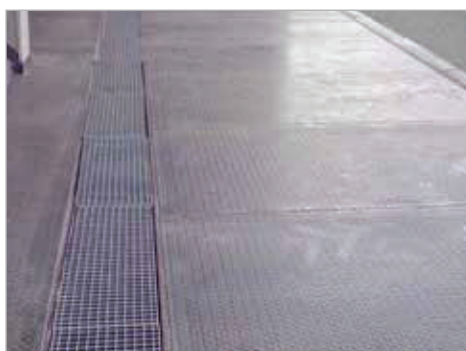
- bespoke design to suit the location
- short lead times mean short downtimes
- steel or stainless steel elements
- various material strengths
- steel plates are welded together on site and fixed to the ground using dowels
- layed and fitted to a firm, level surface
- non-slip surface that can be walked on
- adequate load capacity for pallet trucks; suitably designed, floor elements can also be driven on by a truck or forklift

Accessories

- threshold ramps
- folded or curved thresholds that can be driven on
- drain channel with grate
- a layer of impact sound insulation material or thermal insulation material between the Ground Protection Floor Elements and the original floor surface
- metal skirting to connect to the wall
- emergency showers, exhaust systems
- grid gratings



Folded threshold, can be driven on



Drain channel with grate

Painted finish according to your choice from the RAL colour code chart

DRUM STACKING PALLET **TYPE FSP**



FSP-2 and Drum Lifter RS-I

Store, stack and transport drums using a pallet truck or forklift. For storage of max. 4 x 200 litre drums or 200 l drums in combination with 60 litre drums and/or canisters and small cans

- construction made of 3 mm steel sheet
- galvanized grid (load capacity 1000 kg/m²)
- 100 mm ground leeway
- stacking corners with crane eyes
- can be stacked (3 high)
- safety chain

Types available

FSP

- open sides

FSP-G

- splash protection wall on 3 sides

FSP-D

- mesh sides and back plate



FSP-1



FSP-2 G



FSP-4 D



FSP-2 and FSP-2 G

	Max. no. of 200 litre drums	Dimensions (l x p x w) in mm	Retention capacity in l	Weight in kg paint. / galv.
FSP-1	1	755 x 755 x 1590	225	93 / 102
FSP-2	2	920 x 1410 x 1490	245	125 / 133
FSP-4	4	1410 x 1410 x 1435	275	160 / 180
FSP-1 D	1	760 x 760 x 1590	225	103 / 113
FSP-2 D	2	920 x 1410 x 1490	245	141 / 152
FSP-4 D	4	1410 x 1410 x 1435	275	190 / 212
FSP-1 G	1	760 x 760 x 1590	225	112 / 122
FSP-2 G	2	920 x 1410 x 1490	245	156 / 168
FSP-4 G	4	1410 x 1410 x 1435	275	204 / 224



- every unit tested for leakage
- flammable liquids, GHS categories 1 - 3
- hazardous to aquatic environment, GHS categories 1 - 4