

# TAWI



## VacuEasylift flexible vacuum lifter

Product overview

## TAWI ergonomic lifting equipment

Swedish quality. Global solutions.

Ergonomics is about adjusting work and work environments to the needs of the employees. It's about planning and organizing work in a way that contributes to healthy employees and minimizes the risk of injuries and long term health challenges. Good ergonomics is an effective way of making your business more productive and profitable.

TAWI lifting equipment has been facilitating ergonomic material handling for decades, and by customizing our solutions to your specific needs we can guarantee that they will help lift your business.



## Increase efficiency, safety and ergonomics with VacuEasylift



VacuEasylift is a leading manual vacuum lifter that will lift, lower, move and turn most types of goods in all possible environments and working conditions.



### Protect your employees

Goods are easily picked up with no physical effort for the operator.

Handling difficult and heavy goods such as these large wooden panels is easy with VacuEasylift.

No heavy lifting and no uncomfortable strain on the body means no more aching shoulders, backs and knees.



### Boost efficiency and lower the costs

Using TAWI lifters means that large and heavy goods can be handled by one single person, saving valuable time and resources for your business.

The challenge of increasing productivity and ergonomics at the same time is increasingly important for more and more companies.

Our focus is to help you achieve this.

# Anyone can lift



## Versatile and flexible

VacuEasylift lifts just about anything. Choose between 12 models for lifting sacks, boxes, sheets, panels, crates, bales, drums and much more, up to 270 kg.

A wide selection of handles and suction feet helps customize the lifter to meet your needs. Lift from the top, from the side, or whatever suits your needs.



## Safe and reliable

Lifting should be easy and safe in all possible working conditions, for both the operator and the product.

VacuEasylift is a safe and reliable tool commonly used in manufacturing and mechanical processing, warehouses and distribution terminals. The tool can be adapted for ATEX-regulated facilities. Stainless steel models, ideal for industries with high sanitary requirements, are available on request.

# just about anything



## Ergonomic

Extremely smooth and quick operation is accomplished by using the same handle to lift, lower and release the load, and by using the vacuum to hold and lift the load.

VacuEasylift lets anyone handle goods in all sizes, up to 270 kg, with practically no effort at all.



## Efficient

A two-man job can often be carried out by one operator with VacuEasylift. The lifting system is simple to adjust to suit loads and requirements of most industries.

With a TAWI solution for your lifting needs, you achieve a powerful combination of efficiency, ergonomics and economy that will boost your business. An efficient solution, including everything you need to optimise your manual handling of goods.

## VacuEasylift standard models

Model	VM80	VM100	VM120	VM140	VM160
Lifting capacity	20 kg	30 kg	40 kg	50 kg	60 kg
Max length lift tube	2 000 mm	2 500 mm	2 500 mm	2 500 mm	4 000 mm
Hose Ø	80 mm	100 mm	120 mm	140 mm	160 mm
Stroke	1 500 mm	1 800 / 2 600 mm	1 800 / 2 600 mm	1 800 / 2 600 mm	1 800 / 2 600 mm
Lifting speed	0-1 m/s	0-1 m/s	0-1 m/s	0-1 m/s	0-1 m/s

Model	VM180	VM200	VM230	VM250	VM300
Lifting capacity	80 kg	100 kg	120 kg	180 kg	270 kg
Max length lift tube	4 000 mm	2 500 mm	4 000 mm	2 500 mm	2 500 mm
Hose Ø	180 mm	200 mm	230 mm	250 mm	300 mm
Stroke	1 800 / 2 600 mm	1 700 / 2 400 mm	1 700 / 2 400 mm	1 500 / 1 800 mm	1 500 / 1 800 mm
Lifting speed	0-1 m/s	0-1 m/s	0-1 m/s	0-1 m/s	0-1 m/s

VM80-VM230 are available in stainless steel, ideal for industries with high sanitary requirements. VM250 and VM300 are available in stainless steel with standard hose.



We recommend mounting your VacuEasylift in our own range of TAWI Crane systems. The jib arm or bridge crane suspends the lift tube and is available in different lengths and capacities.

Contact your TAWI representative for more information about our overhead crane systems and jib cranes.

## Vacuum pumps

Our vacuum pumps are designed with three key features in mind; performance, reliability and sustainability. The direct driven pump minimizes friction and unnecessary wear, ensuring continuous operations for your vacuum lifters.

TAWI vacuum pumps are available in two models; medium and large. The medium model is recommended for VM100-140, the large model for VM160-300.



# Handles



Fixed handle



Standard handle



Flex handle



Special handle

A wide selection of handles ensures an ergonomic lifting solution for every operator.

A wide selection of standard suction feet and our ability to build customized special suction feet guarantees that we can help you lift whatever you need to lift.

# Suction feet



Standard handle with special suction foot 630200



Standard handle with suction foot for sacks 630300



Fixed handle with hook tool 630460



Flex handle with suction foot for boxes 630650



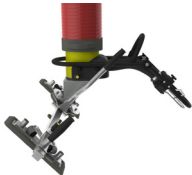
Fixed handle with suction foot 610650



Flex handle with suction foot for reels 610400



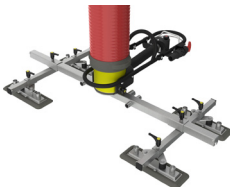
Fixed handle with suction foot for sacks 610320



Flex handle with suction foot for sheets 610620, angle adapter 610810, and handle for angle adapter 610811



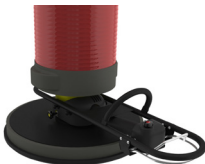
Flex handle with suction for side lifting 610850



Flex handle with special spider yoke for lifting sheets



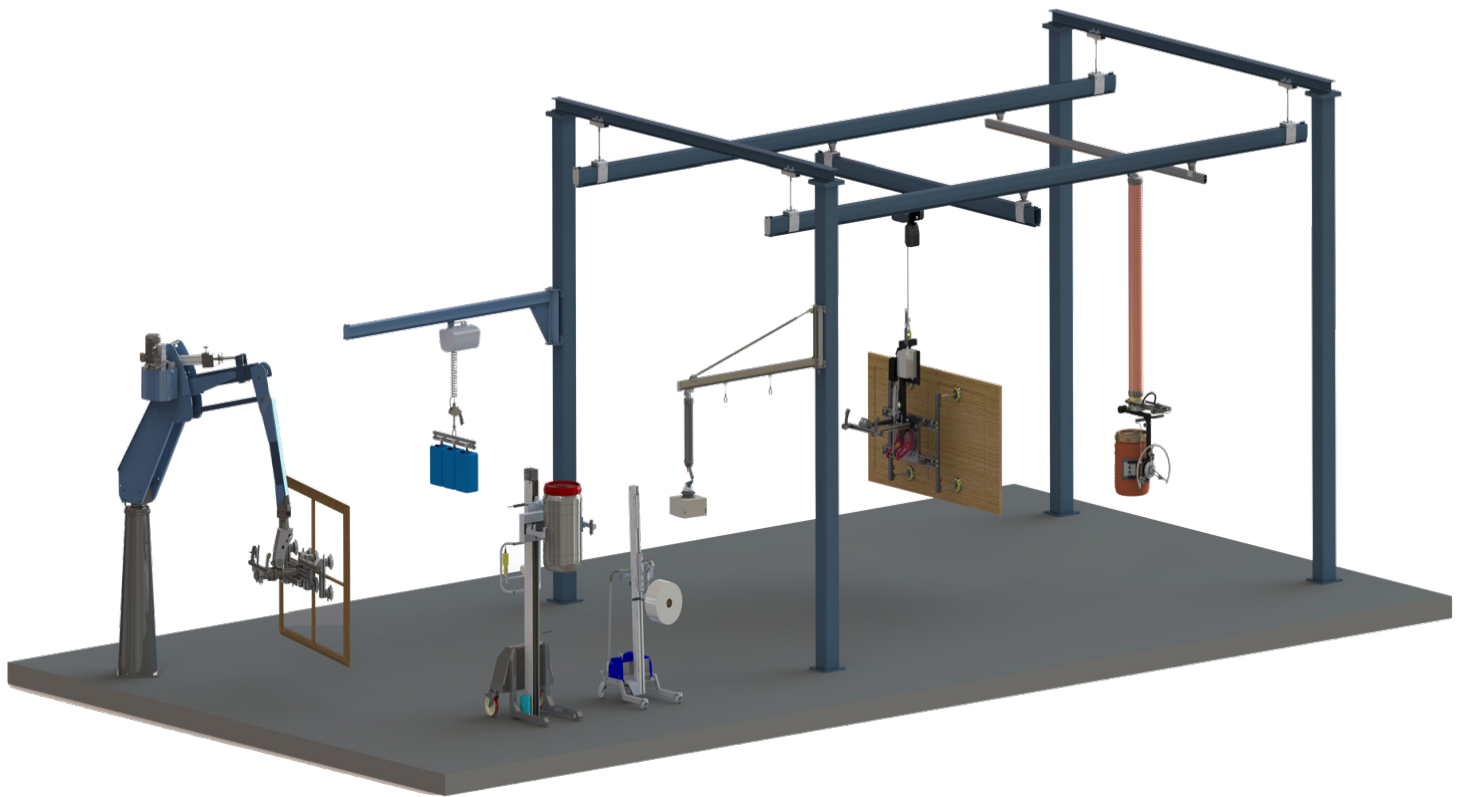
Flex handle with suction foot 610700



Suction foot for drums 650210

# TAWI

Swedish quality. Global solutions.



Mobile solutions

Crane systems

Hoists

Vacuum lifters

Vacuum grippers

TAWI AB, Box 102 05, Transportgatan 1, 434 23 Kungsbacka  
Tel: +46 (0) 300 - 185 00, [info@tawi.com](mailto:info@tawi.com), [www.tawi.com](http://www.tawi.com)