

MP-Series, Multifluid Hand Pumps

▼ Shown: **MP-110**



- **Unbeatable corrosion resistance**
- **Standard supplied with Nitrile seals – can be used for a wide range of fluids such as demineralised water, oil/water emulsions, waterglycols, mineral oils**
- **Two speed pumps up to 1000 bar pressure**
- **Buna Nitrile seals can be exchanged with optional EPDM seal for use with Skydrol or brake fluids**
- **Impregnated aluminium anodized pump housing with stainless steel internal pumping components**
- **Externally adjustable pressure relief valve**
- **1/4" NPTF gauge port.**

MP Series

Flow at Rated Pressure:

2,2 - 21,8 cm³/stroke

Maximum Operating Pressure:

110 - 1000 bar



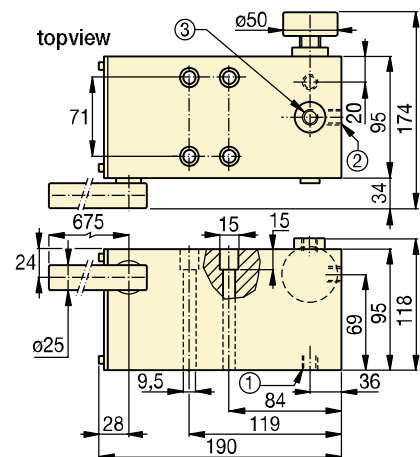
Multifluid Pump Applications

- Filling and testing of aircraft systems as shock absorbers
- Testing of aircraft systems using Skydrol fluid
- Testing of pressure vessels
- Operation of single-acting hydraulic tools and cylinders.



Optional Reservoir Kit

Includes 10 litres tank with skid frame, top plate with reservoir seal, suction pipe and mounting bolts. Useable oil capacity is 7,4 litres. Order model number: **MP-10T**.



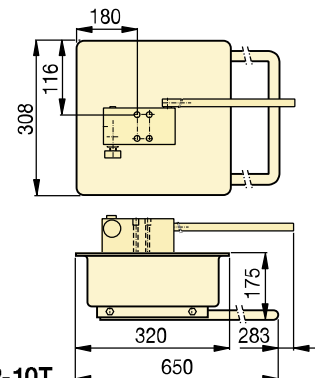
MP-110, 350, 700, 1000

- ① Suction / Tank return port 3/8"-18 NPTF
- ② Pressure port 3/8"-18 NPTF
- ③ Gauge port 1/4"-18 NPTF

Pump Type	Usable Oil Capacity ¹⁾ (cm ³)	Model Number	Pressure Rating (bar)		Oil Displacement per Stroke (cm ³)		Max. Handle Effort (kg)	Piston Stroke (mm)	Weight (kg)
			1st stage	2nd stage	1st stage	2nd stage			
Two Speed	*	MP-110	35	110	52,6	21,8	45	26,5	6,6
	*	MP-350	35	350	52,6	7,8	45	26,5	6,6
	*	MP-700	35	700	52,6	3,1	45	26,5	6,6
	*	MP-1000	35	1000	52,6	2,2	45	26,5	6,6

Note: MP-Pump includes 1,5 mm thick gasket for reservoir mounting.

¹⁾ MP-Series pumps requires the use of an external reservoir.



MP-10T