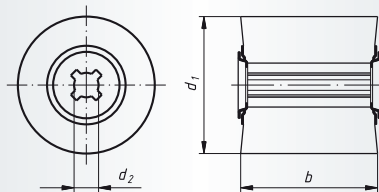


## LWF, Sinus-Abrasive rolls of abrasive fleece for conditioning machines

*Ordering example: A2281100500104*

**Packing unit:**

LWF 100050 = 2 pcs. per type

LWF 100100 = 1 pc. per type

A = reg. Aluminium Oxide

C = Silicon carbide

Machines to suit: LP 1503 VR

Description	Grits	d <sub>1</sub> mm	b mm	d <sub>2</sub> mm	n recom. (1/min)	n max. (1/min)	Product-Number	recommended for									
LWF 100050	A 104	100	50	19	2.800	3.800	A2281100500104	①	②	③	④	⑤	⑥	⑦	⑧		■
LWF 100050	A 106	100	50	19	2.800	3.800	A2281100500106	①	②	③	④	⑤	⑥	⑦	⑧		■
LWF 100050	C 208	100	50	19	2.800	3.800	A2281100500208	①	②	③	④	⑤	⑥	⑦	⑧	⑨	■
LWF 100100	A 104	100	100	19	2.800	3.800	A22811001000104	①	②	③	④	⑤	⑥	⑦	⑧		■
LWF 100100	A 106	100	100	19	2.800	3.800	A22811001000106	①	②	③	④	⑤	⑥	⑦	⑧		■
LWF 100100	C 208	100	100	19	2.800	3.800	A22811001000208	①	②	③	④	⑤	⑥	⑦	⑧	⑨	■

# Material classification

- 1 STEELS AND CAST STEELS**  
Rm up to 800 N/mm<sup>2</sup>
  - common structural steels
  - free cutting steels
  - case hardened steels
  - fine grained structural steels
  - extruded steels
  - toughened structural steels
  - boiler plate
  - nitrided steels
  - cast steels
  - heat treated steels
  - heat resistant structural steels
- 2 ALLOYED, TEMPERED STEELS**  
Rm 800 up to 1200 N/mm<sup>2</sup>
  - case hardened steels
  - spring steels
  - fine grained structural steels
  - nitrided steels
  - heat treated steels
  - wear resistant steels
  - bearing steels
- 3 TOOL STEELS** Rm up to 1300 N/mm<sup>2</sup>
  - 60 - 65 HRC
  - high-speed steels
  - non-alloyed tool steels
  - cold working tool steels
  - hot working tool steels
- 4 RUST, ACID AND HEAT RESISTANT STEELS AND CAST STEELS**
  - austenitic
  - ferritic
  - ferritic-austenitic
  - heat-resistant
  - martensitic
  - stainless, sulphurized

- 5 CAST IRON**
- 6 ALUMINIUM, MAGNESIUM AND COPPER ALLOYS**
  - over 300 HB
  - 200-300 HB
  - up to 200 HB
  - over 15% Si
  - 10-15% Si
  - 0,5-10% Si
  - below 0,5% Si
- 7 TITANIUM AND NICKEL ALLOYS**
  - Rm 900 up to 1500 N/mm<sup>2</sup>
  - Rm up to 900 N/mm<sup>2</sup>
- 8 PLASTICS, WOOD, RUBBER**
- 9 GLASS / CARBIDES**
- 10 STONE / TILES / GAS CEMENT**
- 11 CONCRETE / REINFORCED CONCRETE**
- 12 CERAMIC / FLOOR TILES**
- 13 MARBLE**
- 14 GRANITE**
- 15 FRESHLY POURED CONCRETE**
- 16 ASPHALT**

- best suitable
- suitable
- delivery ex-stock
- ▲ delivery on request
- ⬡ regrind service, please enquire

## Safety Symbols

			
Wear eye protection	Wear hearing protection	Wear a respirator	Read the instructions
			
Wear gloves	Only permitted with a back-up pad		
			
Not permitted for wet grinding	Not permitted for face grinding	Do not use if damaged	Do not use for freehand cutting