



ISO 9001:2008 Certificate



PNEUMATIC PICK HAMMER

SK9

- 5 9410-350
- 6 9410-360
- 6A 9410-430

OPERATION MANUAL

TABLE OF CONTENTS1

LABOUR SAFETY - WARNINGS2

SAFETY INSTRUCTIONS.....3

MATERIAL AND CONSTRUCTION4

APPLICATION4

TECHNICAL DESCRIPTION.....5

MODEL LABELLING5

MAINTENANCE PRINCIPLES6

LUBRICATING6

STORING.....7

DELIVERING7

PARTS LIST.....8

AXONOMETRIC VIEW..... 10-11

Equipment

Do not blindly follow the rules.



Read through the chapter to learn why personal protective equipment is important.

LABOUR SAFETY - WARNINGS

Every person to work with or service the hammer must read or be familiarized with these instructions so as to understand them completely.

Always wear safety shoes, goggles, ear defenders, gloves and other safety equipment prescribed for the given task.

⚠ WARNING Noise and vibrations hazard

Prolonged exposure to noise and vibrations produced by hammer operation puts the operator at risk of health issues. Do not stay in a noisy environment without effective ear defenders.

⚠ WARNING Electricity

The design of the product does not provide protection from electric shock hazard.

⚠ WARNING Dust hazard

Operation may be accompanied by high dust nuisance.

- The product has been designed and constructed to comply with CSN EN 1127-2+A1 and CSN 33 2030 standards on use in locations of dangerous atmospheric conditions 2, category M2, group I (mines).
- The construction of the product complies with requirements of Directive 98/37/EC of the European Parliament and of the Council, as amended by Czech technical regulation – Government Regulation No. 24/2003 Coll., as amended, requirements of harmonized Czech technical standards - CSN EN ISO 12100, standards on group I (mines), category M2 machinery in accordance with Directive 94/9/EC of the European Parliament and of the Council, as amended by Czech technical regulation – Government Regulation No. 23/2003 Coll., as amended, and harmonized Czech technical standards – CSN EN 13 463-1, and conforms to standards on use in „dangerous atmospheric conditions 2“ in compliance with CSN EN 1127-2+A1 to the extent limited by national regulation - CBU Decree No. 22/1989 Coll., § 232, section (1) c) of up to 1,5% methane concentration.
- Source of the supplied compressed air must be stationed in a nonhazardous area.

Supply hoses

- Fire-technical properties of hoses used for supplying compressed air must comply with CBU Decree No. 22/1989 Coll., § 185, section (1), as amended.
- Supply hoses used in group I (mines) areas of higher explosion risk I M2 must meet requirements set by CBU Decree No. 22/1989 Coll., § 232, section c), as amended, and comply with requirements of enactments CSN EN 1127-1 and CSN EN 1127-2+A1 6.4.7, CSN EN 13 463-1 7.4.3, CSN 33 2030.

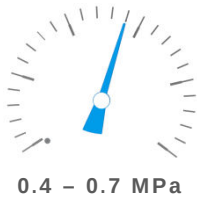
SAFETY INSTRUCTIONS

As the following instructions cannot cover all possibly occurring cases, sound common sense must be employed when working with the hammer and in the vicinity of this machine.

- ▶ Do not touch the trigger until you are ready to operate.
 - ▶ Always hold the hammer with both hands while operating.
 - ▶ Stay on a safe and stable platform while operating.
 - ▶ Do not put the hammer close to your face and do not rest it on your leg.
 - ▶ Do not use your leg to push the hammer down while operating. The tool can break and cause serious injury.
 - ▶ Stand with your legs safe out of the way of the tool while maintaining balance.
 - ▶ Compressed air is dangerous! Do not aim an air hose at yourself or other people. Do not use pressurized air to clean the site or your clothing.
 - ▶ Make sure all hose connections are firm and airtight and secure hoses to prevent loss of air or injury if a hose gets loose or bursts.
 - ▶ Secure hoses using the prescribed number of recommended hose clips and sockets prescribed for the type of hose.
 - ▶ Do not release any joints that are under pressure. Always switch off the air supply and bleed hoses first.
- Only operate the hammer with recommended, approved tools. Work with the recommended air pressure and avoid heavy impacts.
 - Do not get distracted – risk of accident is always present.
 - Make sure there is no plumbing or wiring (electricity, gas, ...) in place of operation.
 - If you come across a foreign object while operating, put the hammer aside and uncover the object carefully to identify it.
 - If you cannot produce sufficient thrust on the hammer (e.g. while operating horizontally or upward), choose another type of machine or technology. Insufficient thrust increases vibrations and risk of injury.

Air pressure

SK pick hammers are constructed for operating air pressure of 0.4 – 0.7 MPa.



MATERIAL AND CONSTRUCTION

Main parts of the hammer are constructed of SAE grade 11, 12 and 14 carbon steels. No materials susceptible to ignition spark formation are used on external parts. The hammer is also free of materials with hazardous electrostatic charging properties. The galvanized steel surface also meets all of the requirements above.

APPLICATION

The pick hammer is a versatile tool. It is designed for breaking up low to medium strength rock and material (concrete, bituminous roadways, coal etc.), in construction works and mining or surface operations.

Technical data and main dimensions	ISO unit	SK 9-5	SK 9-6	SK 9-6A
Weight	kg	9.5	9.5	10.5
Impact energy	J		26	
Impact frequency	Hz		28	
Air consumption	m ³ min ⁻¹		1.1	
Operating air pressure	MPa		0.4 – 0.7	
Effective value of weighted acceleration	m.s ⁻²		9.1	
Measured sound power level	dB	103.9	104.4	102.6
Guaranteed sound power level	dB	105	105	104
Length	mm	470	470	475
Width	mm		180	
Supply hose	mm		Js 13, 16, 20	
Connecting thread	"		G 3/4"	
Tool shank size	mm	Ø25x75	#22x82	#22x82

Mean values (±10% tolerance) at 0.6 MPa air pressure.

TECHNICAL DESCRIPTION

The pick hammer is constructed for operating air pressure of 0.4 - 0.7 MPa. Compressed air is in turns filling spaces below and above floating piston head in hammer cylinder, setting piston into linear reciprocating motion. In power stroke, piston transfers its kinetic energy to a tool that disrupts material. The tool is retained by screw retainer (SK 9-5, 6) or a latch mechanism (SK 9-6A). Exhaust air leaves through a series of holes in silencer. Silencer can be rotated into arrested positions, directing exhaust air to ensure safety and comfort.

MODEL LABELLING

Machines are fitted with labels containing important information. Keep these labels clean and readable at all times and order new ones as necessary.

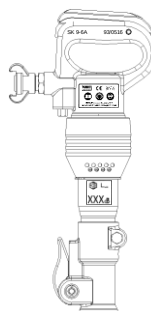


The main label should be found on the handle.




- The 'CE' symbol states that the product is EC-approved (see EC-Declaration of conformity).
- Maximum permitted compressed air pressure is stated in the top right corner.
- The opened book symbol states that user has to read and understand the manual before using the machine for the first time.
- The headset symbol reminds user to wear effective ear defenders.
- The last symbol reminds user to wear safety goggles.

Guaranteed noise level in accordance with Directive 2000/14/EC is indicated by a label under silencer, and a mark on the silencer marks the group and category the machinery falls under in accordance with Directive 94/9/EC – ATEX.

Machine type and serial number are embossed on the handle.



SK 9-5, 9-6 and 9-6A vary in tool shank and tool retainer.

9-5	9-6	9-6A
		
Ø27x75	#22x82	#22x82
Tool shanks and tool retainers		

Thrust

With regards to vibrations and manipulation of the hammer, the optimal thrust is between 150 – 200 N. The thrust must prevent the hammer from working idly, which increases wear and chance of breakdown.

Tool insertion

Unscrew retainer with ring. Always check the state of rubber ring. Insert tool into cylinder and screw retainer back on.

The SK 9-6A version with latch retainer comes without a ring. Insert tool by tilting the latch and then close the retainer.

Never start a hammer without a tool inserted!

MAINTENANCE PRINCIPLES

Only personnel properly acquainted with the structure and function of the hammer can service the tool.

All repairs are to be performed by the manufacturer or authorized trained personnel.

- ▶ Dry, clear air of the appropriate overpressure (see Technical data) must be available in sufficient volumes.
- ▶ Supply hose must match the prescribed dimensions. To avoid excessive frictional pressure loss, do not use hoses of over 15 meters in length (in case of a Js16 hose). If necessary, hose of a larger diameter can be used over greater distances.
- ▶ Protect the hammer from dirt and other harmful particles getting in. Always keep the input and output openings clean.
- ▶ Blow the hose clear to get rid of potentially harmful particles before attaching it to the hammer.
- ▶ Properly tighten all joints and re-tighten after 3-5 hours of first operation.
- ▶ Check-up on the state of the hammer regularly.
- ▶ Hexagonal chuck in SK 9-6 and 9-6A makes use of chisel type tools possible. The open screw retainer can be used for wider chisels and facilitates faster tool replacement. If the hammer operates without sufficient thrust, the screw retainer can crack under heavy impacts of the tool!

LUBRICATING

The hammer must be in good condition and lubricated properly to provide maximum performance, service life and proper functionality. Ensure sufficient lubrication with an LR oiler or a SOOR unit.

Alternatively, pour about 100 cm³ of oil into the air supply hose (at the entry point) by the compressor unit and 5 cm³ into the air inlet at the beginning of each work shift and repeat every 2-3 hours of operating.

- ◆ Do not use hydraulic oils or unstabilized colseed oils for lubrication.
- ◆ Before storing the tool for over three weeks, conserve it using mineral oil (see Storing).
- ◆ Do not use ecological oils for conservation.

Recommended ecological oils:

BP BIOHYD SE 46, ÖMV BIOHYD M 32,
TOTAL HYDROBIO 46, TopOil BIO UNI

Recommended mineral oils:

PARAMO PNEUMAT 46

STORING

Before storing the tool for over three weeks, it needs to be conserved.

- ◆ Conserve the hammer by pouring cca. 50 cm³ (0.5 dcl) of mineral oil into the air inlet and running it shortly to coat its internal parts with oil.
- ◆ Store the hammer in dry conditions – protected from weather factors and relative humidity below 75%.
- ◆ Do not store the hammer close to corrosive chemicals or gases.

In proper storage conditions, the hammer can be stored for a year and spare parts for a year and a half without re-conservation.

DELIVERING

The hammer is delivered separately, including this manual and a certificate of warranty.

By default, we deliver the ¾" **Quick Coupling** as the joint for the supply hose. Alternatively, the quick coupling can be replaced by a cap nut with a socket, which can be attached to the ¾" threaded socket.

The cap nut (item no. 319 257) can be combined with:

- Ø13 socket (item no. 319 264)
- Ø16 socket (item no. 319 255)
- Ø20 socket (item no. 319 256)

Following items are also for sale:

- tools
- oilers, water separators
- recommended ecological oils
- hoses and hose ends, adapters, nuts, sockets, clips

Low temperatures

Presence of condensate in air coupled with low temperatures can cause the hammer to freeze up.



Add an AOV 6 water separator or the SOOR unit before the hammer and as far away from the compressor unit as possible (min. 20 m).

Ordering spare parts

All hammers are manufactured in accordance with drawing documentation to ensure interchangeability of all components.

Please state the hammer type, name, quantity and item no. of the desired component in your order form.

Example: SK 9-5
Piston 5003-475 1pc

Pos.	Item No.	Title	Qty	Standard
	9410 350	Pick hammer SK 9-5 Ø27x75		
	9410 360	Pick hammer SK 9-6 #22x82		
	9410 430	Pick hammer SK 9-6A #22x82		
1	8323 590	Cylinder Assy. Ø25x75	1	J
1	5095 572	Cylinder	1	J
2	2005 280	Chuck Ø25x75	1	J
1	8323 600	8323 920		
		Cylinder Subassy. # 22x82	1	J
1	5095 572	5095 861		
		Cylinder	1	J
2	2090 220	2090 610		
		Chuck #22x82	1	J
3	273 123	273 123		
		Rubber Sealing 4202-050	1	J
4	273 129	273 129		
		Rubber Ring 4201-311	1	J
5A	8042 291	8042 291		
		Closed Screw Retainer	1	J
5B		8042 300		
		Open Screw Retainer	1	N
6		8330 041		
		Latch Retainer Subassy.	1	J
7		5132 230		
		Latch Retainer	1	J
8		309 331		
		Screw M 12 x 65	1	J
9		311 326		
		Nut M 12	1	J
10		311 408		
		Pin 12 x 50	1	J
11		311 406		
		Pin 20 x 50	1	J
12		5256 102		
		Latch	1	J
13		315 138		
		Spring 4501-980	1	J
14		0900 950		
		Pin	1	J
15	5003 475			
		Piston	1	J
16	3908 060			
		Distribution Ring	1	J
17	1511 281			
		Cover	1	J
18	3051 011			
		Pin	1	J
19	273 406			
		Silencer	1	J
20	4771 050			
		Safety Ring	1	J
21	8040 140			
		Handle Assy.	1	N
22	5259 483			
		Handle	1	J
23	1411 172			
		Trigger	1	J
24	311 038			
		Spring Pin 8 x 28	1	J
25	722 094			
		Ball 17 (plastic)	1	J
26	315 007			
		Spring 4500-240	1	J
27	311 376			
		Plug	1	J
28	4087 330			
		Threaded Socket G 3/4"-3/4"	1	J
29	414 259			
		Quick Coupling 3/4"	1	J
30	3081 271			
		Trigger Pin	1	J
*	319 264			
		Socket Js 13	1	N
31*	316 255			
		Socket Js 16	1	N
*	319 256			
		Socket Js 20	1	N
32*	319 257			
		Cap Nut 3/4"	1	N
-	8040 160			
		Handle Assy. (bottom triggering)	1	N
-	5259 591			
		Handle	1	N
-	562 015			
		Trigger	1	N
-	311 377			
		Spring Pin 6 x 28	1	N
25	722 094			
		Ball 17 (plastic)	1	N
26	315 007			
		Spring 4500-240	1	N
27	311 376			
		Plug	1	N
28	4087 330			
		Threaded Socket G 3/4"-3/4"	1	N
29	414 259			
		Quick Coupling 3/4"	1	N
30	3081 271			
		Trigger Pin	1	N

J = Standard N = On Demand * = Replaces Quick Coupling (29)

SK 9-5, 6, 6A

