

made
in
germany



Ultrasonics.Steam.Ultraclean.



Watches and jewellery

Elmasteam 8 basic

Superior steam jet cleaning for watch and jewellery applications

- Cleaning, rinsing and drying - all with one device
- Long steam availability with 8 bar steam pressure
- Individually adjustable pressure ranges "soft" and "strong"
- Automatic "Eco-mode" saves costs and energy and is environmentally friendly
- Integrated decalcification programme
- 3 years warranty*

www.elma-ultrasonic.com

Elmasteam 8 basic

The environmentally friendly cleaning alternative

The compact Elmasteam 8 basic is the ideal steam cleaning machine for watch and jewellery making workshops for the cleaning of worn and mounted jewellery as well as for watch straps, chains and rings with set stones.

With the **selectable pressure modes „soft“ und „strong“**, the individual regulation of moisture in the steam (**wet or dry steam**) and the strong heating power, the Elmasteam 8 basic is ready for even challenging cleaning tasks. The individually adjustable **Eco-mode** ensures that the unit closes automatically down to 3 bar operating pressure in order to save energy and cost. The optional **compressed air function** allows to blow off, to cool and to dry the cleaned parts.



Simple filling with water via the integrated funnel

Steam regulation as optional function:

- "wet" - wet steam
- "dry" - dry steam

Settings and working modes

- Steam outlet: Releasing the remaining pressure
- "Soft-" and "Strong"-modes: Individually adjustable pressure modes
- Lock-mode: Deactivates the handpiece and the foot pedal during breaks
- Service-modes: Integrated decalcification programme, energy-saving Eco-mode, etc.

Flexible handpiece with 2 integrated functions:

- Steam
- Compressed air for drying wet parts (optional, if compressed air is integrated and connected)

Compact design Space-saving tabletop units with wall brackets

See the Elmasteam 8 basic movie. 



Cleaning with fixed nozzle and foot pedal
Ideal for working with both hands or for larger workpieces.



Cleaning with flexible handpiece
Parts can be held securely (also with tweezers) and sprayed all-round quickly and effectively.



Cleaning in the evaporating dish
Moisture and dirt are absorbed and can be easily disposed.

Elmasteam 8 basic

Quality and safety with smart technology

QUALITY and SAFETY are top priorities at Elma. This means, only tried and tested components and high quality materials are used. For more user safety, Elmasteam 8 basic has an integrated, **automatic Lock-mode**.

Water can be filled via the integrated funnel in the tank or via the rear connection and the integrated pump. **Regular decalcifications increase reliability in operation and the product-life** of the

heating. The decalcification programme can be easily started in Service-mode. Occuring sediments can be rinsed out following the operating instructions and using the rinsing set.

To reduce maintenance efforts and to extend service intervals when using city water, water filtering cartridges from Brita can also be used and are available as optional accessory.



Fixed nozzle with foot pedal
for working with both hands

Clearly arranged filling level and service display
Constant and easy control of the operating status

Digital manometer
Display of desired and actual steam pressure values

Connections on the rear
Optional for compressed air and for automatic water filling (works only with integrated, automatic pump)

Application examples before and after cleaning

Jewellery ring



Removal of dirt arising from wearing

Jewellery chain



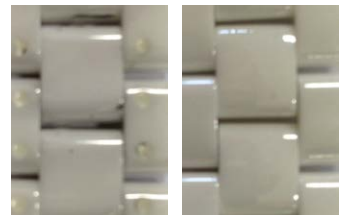
Removal of polishing paste

Watch case



Removal of polishing paste

Watch strap



Removal of grease and silicone

With the Elmasteam 8 basic contaminations such as oils, adhesives and pickling agents can be gently removed. Furthermore the Elmasteam 8 basic is also used for degreasing watch and jewellery parts before galvanisation.

The Elma Cleaning Concept

In the pre-cleaning stage much of the contamination is already removed or solubilized if Elmasteam 8 basic steam cleaning units are used (①). Pre-cleaned parts carry less dirt into the ultrasonic bath. Thus the cleaning cycles will be shorter and the cleaning bath can be used for a longer time (②).

Rinsing with Elmasteam 8 basic and pure water removes remaining particles and residues of the ultrasonic bath (③). Efficient drying of the parts with the Elma hot-air-dryer (④) is the last step of professional parts cleaning.



Technical Data

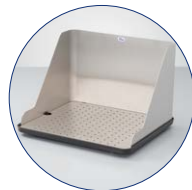
Operating pressure (bar)	8.0	Steam temperature in the tank (°C)	max. 185
Pressure tank volume (l)	5.0	Steam temperature at the nozzle (°C)	max. 160
Max. filling volume (l)	3.8	Dimensions W/D/H (mm)	285 / 350 / 520
Max. power consumption (W)	3120	Weight (kg)	20.0

The scope of delivery includes:



Tweezers · Sieve · Maintenance hose · Rinsing set · Tank cap

Further accessories and optional unit functions:



Evaporating dish



Water filter cartridge
Brita purity C150 Quell ST



Compressed air
(optional function)



Canister with
filling level meter

*3 years warranty for proper use in accordance with the operating manual. Wear parts are not covered by the warranty.



Ultrasonics.Steam.Ultraclean.