

# SMG

## HIGH-PERFORMANCE MACHINES FOR STRAPPING USING PLASTIC STRAPS



SMG 10/15



SMG 20/25/20S/25S



SMG 50/55



SMG 57



SMG 65/65S



SMG 65i/75i



SMG 50i/55i



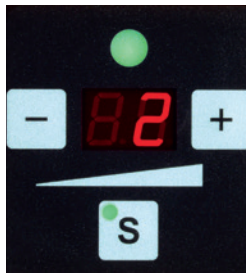
# THE NEW SMG GENERATION

FROM THE FREE-STANDING MACHINE TO THE FULLY AUTOMATED PACKING LINE

## 5 HIGHLIGHTS

- Up to 70 cycles per minute
- Touch Panel: Simple and intuitive operation
- Modern technology, few moving parts
- Constant strap tension for different products
- Simple strap change

## USER-FRIENDLY, COST-SAVING, MAINTENANCE-FRIENDLY



User-friendly: strap tension adjustable via push button



Simple strap coil change: minimum downtime time when changing the coil thanks to automatic threading



Optimum accessibility and tool-free maintenance

## STRAPEX BONUS POINT

Machine, strap and customer services as system supply.

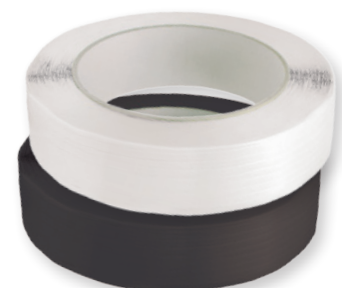


## SAVE COSTS WITH THE CORRECT STRAP SELECTION

Unnecessary costs due to straps that are too wide are avoided. Strapex strapping machines allow the use

of thin and flexible PP strap (polypropylene). These are placed gently around the edges of the package and do not

cause any damage. Cost-effective strap for gentle strapping.





# SMG 10/15/20/25/20S/25S

SEMI-AUTOMATIC MACHINES  
FOR SMALL TO LARGE PACKAGED GOODS



**SMG 10/15**  
With integrated  
strap dispenser



**SMG 20/25**  
With side-mounted  
strap dispenser

## SMG 20S/25S

With special pressure  
plate for small and narrow  
packed products

As free-standing machine or  
for integration into a  
conveyor system



# SMG 50/55/57/65/65S

## FULLY-AUTOMATIC MACHINES FOR SMALL TO LARGE PACKAGED GOODS

Fully-automatic machines



### SMG 50/55/57

For integration into conveyor systems



### USER-FRIENDLY

- Touch panel: Self-explanatory
- Simple operation
- Setting the settings via the pushbutton
- Selection of different standard strapping programmes
- Infinitely adjustable conveying speed
- Detection and positioning of the packages via the light barrier
- High availability and high operating safety
- For continuous operation
- Robust compact design

Side-head machines



### SMG 65

For general bulky and heavy packaged goods



### SMG 65S

With special pressure plate for small and packed products



# SMG 20i/25i/50i/55i/65i/75i

SEMI- AND FULLY AUTOMATIC  
STAINLESS STEEL MACHINES  
FOR THE FOODSTUFF & PHARMACEUTICAL INDUSTRIES



### SMG 20i/25i

As free-standing machine  
or with roller table for  
integration into conveyor systems



### SMG 50i/55i

With integrated conveyor  
and connectivity to use in  
an automated line



### SMG 65i

Corrosion-resistant version for  
demanding environments, such  
as in the foodstuff and fishery  
industries



### SMG 75i

Corrosion-resistant  
version with  
integrated conveyor





# OPTIONS

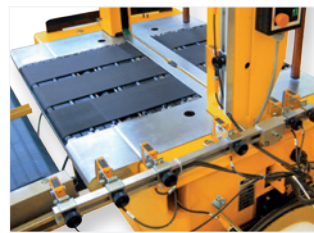
## OPTIMUM SPECIFICATION FOR DIFFERENT OPERATING CONDITIONS AND REQUIREMENTS



**Hold-down device**  
For compressing packages and loose bundles



**Package / bundle stop**  
For positioning of loose bundles or packages



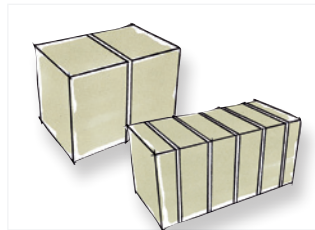
**Photocells - two strap tension / package height check**



**Coil end pre-warning**



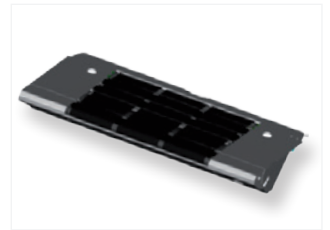
**Interface**  
For integration in existing production systems



**Diverse programme options**



**Signal lamps**



**Conveyor extension**



**Fixable feet**  
Fixing on the ground using adjustable feet



**Package Support Roller**



**Roller table**



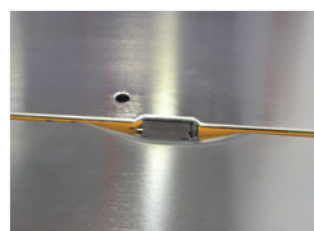
**External program selection from positioning system**



**Remote Foot switch with cover hood**



**Second foot pedal**



**Table strapping triggered by photocell**



**Mobile manual trigger, with magnetic attachment**



# STAINLESS STEEL MACHINES

## Technical data



Standard machines	SMG 20i	SMG 25i	SMG 50i	SMG 55i	SMG 65i	SMG 65iS	SMG 75i	SMG 75iS
Strap width, mm	5	9/12	5	9/12	9/12	9/12	9/12	9/12
Dispenser position	Side-mounted	Side-mounted	Side-mounted	Side-mounted	Top	Top	Top	Top
Cycles per minute up to without conveyor	70	70	70	70	70	70	70	70
Working height, mm	670-930	670-930	720-950	720-950				
Conveying height, mm					580-1,060	770-930	580-1,060	580-1,060
Seal height, mm								
Electrical connection (1PNE)	115/230 V 50/60 Hz	115/230 V 50/60 Hz	115/230 V 50/60 Hz	115/230 V 50/60 Hz	115/230 V 50/60 Hz	115/230 V 50/60 Hz	115/230 V 50/60 Hz	115/230 V 50/60 Hz
Strap tension, up to N	300	450	300	450	600	600	600	600
Heat weld sealing	30 s	30 s	30 s	30 s	30 s	30 s	30 s	30 s
Room temperature	5-40°C	5-40°C	5-40°C	5-40°C	5-40°C	5-40°C	5-40°C	5-40°C
Relative humidity	10-85%	10-85%	10-85%	10-85%	10-85%	10-85%	10-85%	10-85%
Emission sound pressure	79 dB (A)	79 dB (A)	79 dB (A)	79 dB (A)	79 dB (A)	79 dB (A)	79 dB (A)	79 dB (A)
Machine weight from, kg	170	170	300	300	240	240	280	280
<b>Arch dimensions</b>								
(Width x height)								
650 x 500 mm	•	•	•	•	•		•	
650 x 600 mm						•		•
850 x 650 mm	•	•						
<b>Plastic strap PP, 0.35–0.60 mm</b>								
Strap coil Ø, inside / outside, mm	200/430	200/430	200/430	200/430	200/430	200/430	200/430	200/430
<b>Packaged goods</b>								
Width x height min., mm	100 x 20	100 x 20	100 x 50	100 x 50	100 x 100	100 x 60	150 x 100	150 x 60
Min. length, mm							250	250
Max. weight, kg	35	35	35	35	35	35	35	35