



C/ Albuñol, par.250  
Pol. Ind. Juncaril,  
18220 ALBOLOTE (Granada) ESPAÑA  
Telf: (+34)958 490 410  
Fax: (+34) 958 466 645  
info@simasa.com  
www.simasa.com

- ES MANUAL DE INSTRUCCIONES ORIGINAL
- ENG ORIGINAL USER GUIDE
- FR MANUEL ORIGINAL D'UTILISATION
- PO MANUAL DE INSTRUÇÕES ORIGINAL
- DE URSPRÜNGLICHES GEBRAUCHSANWEISUNG
- PL ORYG NSTRUKCJA OBSŁUGI
- IT MANUALE D'ISTRUZIONI ORIGINALI
- RUS Инструкция по эксплуатации (завода изготовителя) Käyttöohje



ATA 450 Li-ion  
ATA 580 Li-ion

**ÍNDICE**

<b>1. GENERAL INFORMATION .....</b>	<b>4</b>
<b>2. GENERAL DESCRIPTION .....</b>	<b>4</b>
<b>3. SECURITY INSTRUCTIONS .....</b>	<b>4</b>
<b>4. SAFETY INSTRUCTIONS .....</b>	<b>6</b>
<b>5. TECHNICAL INFORMATION.....</b>	<b>7</b>
<b>5.1 WORKPIECE THICKNESS .....</b>	<b>7</b>
<b>6. PARTS OF THE THE MACHINE .....</b>	<b>8</b>
<b>7. HOW TO USE .....</b>	<b>9</b>
<b>7.1 LOADING THE WIRE COIL.....</b>	<b>9</b>
<b>7.2 SET UP A TIE.....</b>	<b>10</b>
<b>7.3 FOR PROPER TYING PERFORMANCE.....</b>	<b>11</b>
<b>7.4 RECOMENDATIONS FOR TYING.....</b>	<b>11</b>
<b>8 DIAGNOSIS OF PROBLEMS .....</b>	<b>12</b>
<b>9 MAINTENANCE .....</b>	<b>13</b>
<b>10 STORAGE.....</b>	<b>13</b>
<b>11 DECLARATIONS ON MECHANIAL VIBRATIONS.....</b>	<b>13</b>
<b>12 SPARE PARTS .....</b>	<b>13</b>
<b>13 ENVIRONMENT PROTECTION .....</b>	<b>13</b>

## 1. GENERAL INFORMATION

**WARNING: Please read and understand perfectly the present instruction before using the machine.**

This manual provides you with the necessary instructions to start, use, maintain and in your case, repair of the present machine. All aspects as far as the safety and health of the users is concerned have been stated. Respecting all instructions and recommendations guarantees safety and low maintenance. As such, reading this manual carefully is compulsory for any person responsible for the use, maintenance or repair of this machine.

## 2. GENERAL DESCRIPTION

ATA 450 and 580, have been designed and manufactured to be used in work sites in tying re-bar and flat bars for construction. The machine has an ergonomic design, which gives the operator the possibility to simplify the work getting a high efficiency operation.

- The automatic rebar tying machines is a hand-help in tying bars quickly.
- The machine has an ergonomic design, which gives the operator the possibility to simplify the work getting a high efficiency operation.
- Low maintenance.
- The machine consists of a main body, a spool of wire, battery charger and an extra battery.
- The machine is driven by an electric motor powered by battery. This turns the reel and a small rotor that binds the wire.
- Incorporates the most advanced technology for power tools, which we are pleased to confirm that it has acquired a useful and easy to use machine.

## 3. SECURITY INSTRUCTIONS



To avoid serious injuries to persons or property, please read these safety instructions carefully and make sure you understand them.

Using the RE-BAR tier for other purposes or other applications than described in this manual can result in serious accidents. Please make sure that you follow all instructions in the manual.

### Use appropriate protection gear.

Employer and operator must make sure that the operator uses proper eye protection when the tool is used. This protection must comply with current laws and norms.



### Do not use the RE-BAR tier near flammable substances.

Never use the RE-BAR tier near any flammable substances or fumes. The fumes from these can be sucked into the engine and cause an explosion.

### Ear protection can be necessary.

On a lot of work sites, it can be necessary to wear ear protection, to avoid permanent damage to the ears. Employers and employees must make sure that proper ear protection can be found and is used on the work site.



### Do not use the RE-BAR tier in wet or damp environments.

If the RE-BAR tier is used in direct rain or water, damp environments or similar, the risk of getting an electrical shock is increased. Do not leave the RE-BAR tier where it can be exposed to this.

### No children near the RE-BAR tier.

Do not allow spectators, especially children, near the machine while working with it.

**Check the parts of the RE-BAR tier before inserting the battery.**

Check that all screws are tightened properly. Improper tightening of screws can result in an accident or breakage. If parts are missing or need to be repaired, contact your dealer immediately. Use only parts approved by the manufacturer.

**Set the main switch to 0 position and lock the trigger when changing or adjusting the wire coil or if a fault occurs and the machine cannot be used.**

If the machine is left on, it may cause damage.

**Keep clear of the wire coil during use of the RE-BAR tier.**

If not, it can cause serious injury.

**Keep clear of the curl guide during use of the RE-BAR tier.**

You may get caught in the wheels and suffer serious injury.

**Do not point the RE-BAR tier towards others during use.** People can get hurt if they are caught in the machine during use. When tying, be careful and stay clear of the machine mouth and curl guide.

**Do not touch the trigger unless you have to.**

When carrying the RE-BAR tier and when not tying, remember to set the main switch to 0 position, and lock the trigger. If not, you will risk activating the RE-BAR tier unintentionally and cause a dangerous situation.

**Do not use the RE-BAR tier during a malfunction.**

If the RE-BAR tier does not work correctly, set the main switch to 0 position and lock the trigger, before checking what is wrong. If necessary, contact your dealer and have the RE-BAR tier repaired.

**When inserting the battery, check the following points. Do not load a wire coil in the RE-BAR tier if:**

- \* There is a sound from the curl guide, even though the RE-BAR tier is not in use.
- \* The RE-BAR tier is warmer than usual, smells odd, or a noise is coming from the machine when not in use.
- \* The RE-BAR tier starts itself without being activated.
- \* Do not use the RE-BAR tier without correcting the fault.
- \* If it is not possible to correct it, contact your dealer.

**Do not make any modifications to the RE-BAR tier.**

Modifying the RE-BAR tier does not only reduce the function of it, but also the level of security. Do not make any modifications to the RE-BAR tier.

**Make sure that the RE-BAR tier is in good condition.**

To maintain the functionality and the quality from the work of the RE-BAR tier, maintain it properly and make sure that it is being serviced on a regular basis. Remember to keep the handle free of oil and dirt.

**Use only approved batteries.**

Use only the approved type of battery LI-300 for this RE-BAR tier. If using another power source, for example another type of battery, dry cell battery or a car battery, the machine can break down or burst into flames.

**Charge the batteries before use.**

A new battery or a battery which has not been used for a long period of time, may be discharged and has to be fully recharged before use.

**When the main switch is set to**

1, do not place your fingers near the curl guide or other moving parts of the machine!



**Avoid switching the main switch repeatedly Between 1 and 0. This can cause a machine breakdown.**



**Use only approved charger.**

Use only the approved charger which comes with the RE-BAR tier and batteries. The batteries cannot be recharged with other chargers – this may cause damage, overheating or fire.

**Recharge the batteries with the Correct voltage.**

**Make sure that the charger is connected to an ordinary 100-240V outlet.** Using another voltage than 100-240V will cause a malfunction and/or overheating, causing damage to the battery and charger.

**Never use a booster-type transformer.**

**Never charge the battery in a wet or damp environment.**

Charging in these conditions may cause an electric shock or short circuit.

**Do not place anything on the charger during use.**

The charger may become overheated and eventually catch fire.

**Charge the battery in a well ventilated place.**

Avoid placing it in direct sunlight.



Charge the battery at a temperature between

0 y 40° celsius.

0 y 104° Fahrenheit.

Leave the charger to rest between charges.

**Keep the charger's connectors clean.**

All objects on the connectors can cause electric shock or malfunction. Use the charger in a dust- and dirt-free environment.

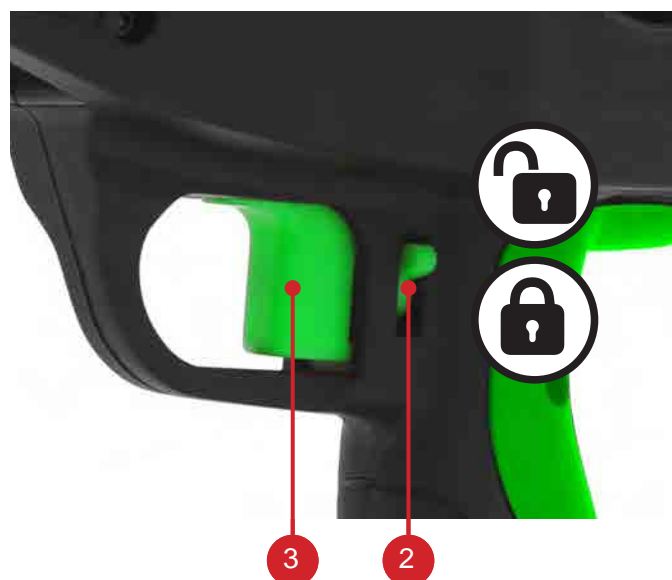
#### 4. SAFETY INSTRUCTIONS

Check the rebar tier works fine before using it at the job site, otherwise do not use it.

**Trigger lock.**

The RE-BAR is equipped with a trigger lock (2). Lock the trigger when the RE-BAR tier is not in use.

When the RE-BAR tier is not in use, lock the trigger (3).



**Handle the charger cord carefully.**

Do not carry the charger in the cord, and do not unplug it by pulling the cord. You will risk that the cord becomes damaged and will cause a malfunction. A damaged cord must be replaced or repaired.

**Put the cap on the battery connectors when not in use.**

This must be done to prevent a short circuit in the battery.

**Make sure that the battery connectors do not touch each other.**

A short circuit between the connectors will overheat and damage the batteries.

**If the battery is fully charged, but the operating time significantly reduced, the battery is defective and must be replaced.**

**If the battery temperature is low (10°C or lower) the charging time will be prolonged.**



**Do not use defective batteries. The RE-BAR tier will not work properly.**

**Curl guide.**

If you pull the trigger while the curl guide is open, the RE-BAR tier will make a warning signal and refuse to tie. To make the tie, release the trigger and make sure that the curl guide is closed.



## 5. TECHNICAL INFORMATION

Model	ATA-450	ATA-450 (metric)	ATA-580	ATA-580 (metric)
Dimensions	11 13/16" x 11 13/16" x 4 1/8"	300 x 300 x 105 mm	11 13/16" x 11 13/16" x 4 1/8"	300 x 300 x 105 mm
Weight	5,95 Lb	2,7 Kg	6.17 Lb	2,8 Kg
Battery type	14,4V 4,4 A Li-ion	14,4V 4,4 A Li-ion	14,4V 4,4 A Li-ion	14,4V 4,4 A Li-ion
Recharging time	Full charge 70 mins.	Full charge 70 mins.	Full charge 70 mins.	Full charge 70 mins.
Wrap per tie	2 - 3	2 - 3	3 - 4	3 - 4
Ø Rebar size min. - max.	#3 - 14#	Ø6 - Ø45 mm	#4 - 18#	Ø12 - Ø58 mm
Ø Wire	21 Ga.	0.8 mm	21 Ga.	0.8 mm
Length x coil approx.	328 Ft	100 m	328 Ft	100 m
Weight x coil	0.88 Lb	0,4 Kg	0.88 Lb	0,4 Kg
Wire length x ties	23 5/8" - 32"	60 - 82 cm	40 9/16" - 50 13/32"	103 - 128 cm
Ties x coil	170 - 120 Ties	170 - 120 Ties	90 - 78 Ties	90 - 78 Ties
Ties x charge	3500 Ties	3500 Ties	3300 Ties	3300 Ties
Batteries x set	2 pcs.	2 pcs.	2 pcs.	2 pcs.
Charger	1 pc.	1 pc.	1 pc.	1 pc.
Packaging dimensions	19" x 5 5/16" x 15 5/32"	485 x 135 x 385 mm	19" x 5 5/16" x 15 5/32"	485 x 135 x 385 mm
Gross weight	16,75 Lb	7.6 Kg	16,97 Lb	7.7 Kg
Operating temperature	14° F to 104° F	-10°C - 40°C	14° F to 104° F	-10°C - 40°C
Humidity	Max. 80% Rh	Max. 80% Rh	Max. 80% Rh	Max. 80% Rh

### 5.1 WORKPIECE THICKNESS



	Mínimum Rebar # / mm	Máximun Rebar # / mm
ATA 450	#3 x #3 (Ø6 x Ø6mm)	#6 x #6 (Ø20 x Ø20mm)
ATA 580	#4 x #4 (Ø12 x Ø12 mm)	#8 x #8 (Ø25 x Ø25 mm)



	Mínimum Rebar # / mm	Máximun Rebar # / mm
ATA 450	#3 x #3 x #3 (Ø6 x Ø6 x Ø6 mm)	#4 x #4 x #4 (Ø12 x Ø12 x Ø12 mm)
ATA 580	#4 x #4 x #3 (Ø12 x Ø12 x Ø10 mm)	#5 x #5 x #8 (Ø16 x Ø16 x Ø25 mm)



	Mínimum Rebar # / mm	Máximun Rebar # / mm
ATA 450	#3 x #3 x #3 x #3 (Ø6 x Ø6 x Ø6 x Ø6 mm)	#4 x #4 x #4 x #4 (Ø12 x Ø12 x Ø12 x Ø12 mm)
ATA 580	#3 x #3 x #3 x #3 (Ø10 x Ø10 x Ø10 x Ø10 mm)	#4 x #4 x #5 x #5 (Ø12 x Ø12 x Ø16 x Ø16 mm)

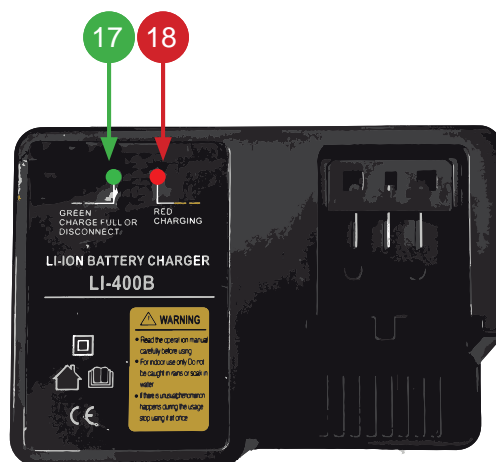
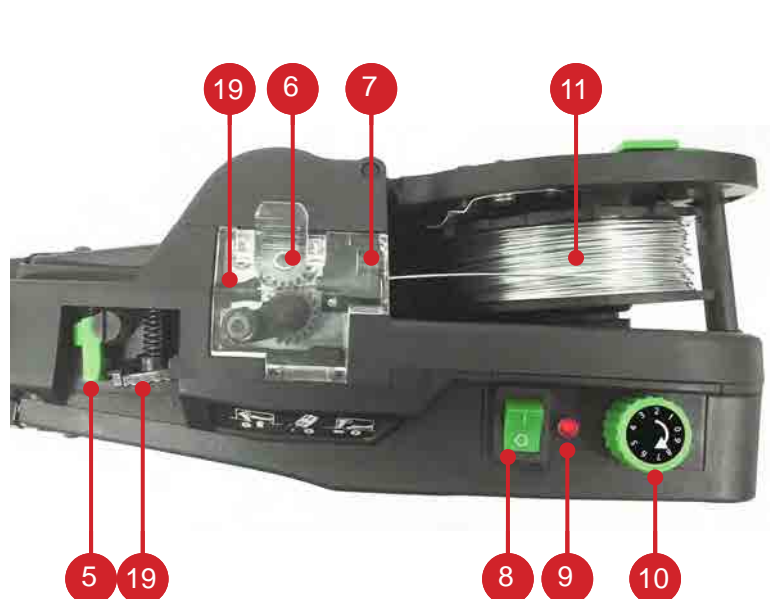


## 6. PARTS OF THE THE MACHINE



- 1 Curl guide
- 2 Trigger lock.
- 3 Trigger.
- 4 Grip.
- 5 Release stopper.
- 6 Feeding gears.
- 7 Wire guide.
- 8 Main switch.
- 9 Led.
- 10 Torque and wrap dial.
- 11 Wire coil.

- 12 Battery.
- 13 Battery latch.
- 14 Real stopper.
- 15 Upper jaw armCurl up.
- 16 Upper jaw wire guide.
- 17 Charge lamp.
- 18 Stand by lamp.
- 19 Release lever.
- 20 Pipe

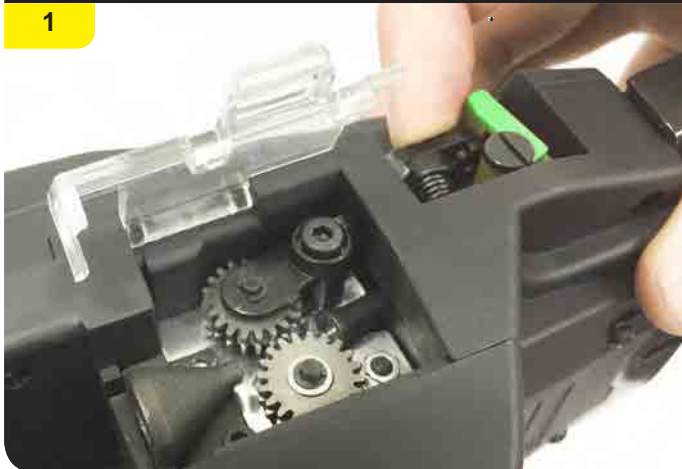


## 7. HOW TO USE

### 7.1 LOADING THE WIRE COIL

Press the release lever till it is caught by the release stopper, so as to open the feeding gears and insert the wire.

1



Unlock the reel stopper to open the reel stay door and load the wire coil.

2



Once wire coil is loaded lock the reel stay door back again.

3



Insert the tip of the wire into the wire guide, through the gap of the feeding gears till the pipe and all the way into the machine upper jaw arm A (max. 70mm).

4



Push the release stopper to unlock the release lever, make sure the release lever is back to original position and the feeding gears are clamping the wire.

5



Switch on the tool by pressing the main switch to position 1, the machine is ready to use.

6





## 7.2 SET UP A TIE

The torque and wrap dial adjusts the tension of the ties and the number of wraps per tie. Depending on which model, you can perform ties of 2 and 3 wraps of wire for model ATA 450 or 3 and 4 wraps of wire for model ATA 580.

### SELECTING THE TENSION OF TIES

To increase the tension of the ties, turn the torque and wrap dial **ALWAYS CLOCKWISE** and **GRADUALLY**, matching the torque numbers from 0 to 9 with the arrow pointer, where 0 torque means lower tension and 9 torque means higher tension.

### SELECTING THE WRAPS PER TIE

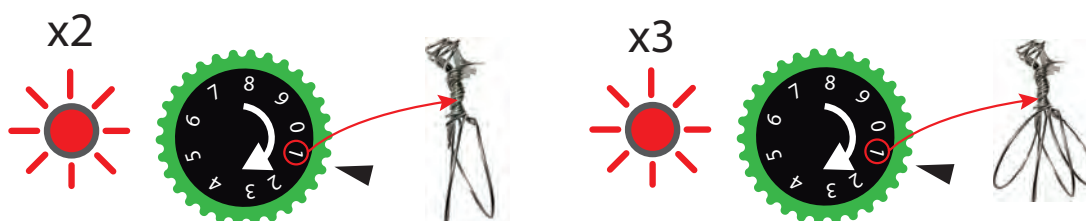
Every time the torque and wrap dial turns one position **CLOCKWISE**, the red LED will flash 2 or 3 times (for ATA 450) and 3 or 4 times (for ATA 580).

The number of flashes indicates the number of wraps of wire per tie, 2 flashes = 2 wraps / 3 flashes = 3 wraps / 4 flashes = 4 wraps.

As long as the torque and wrap dial turns clockwise and gradually, a BEEP signal will sound when matching the dial 0 torque position with the arrow pointer, indicating the change on the number of wraps from 2 to 3 and 3 to 4 or vice versa.

### Example.

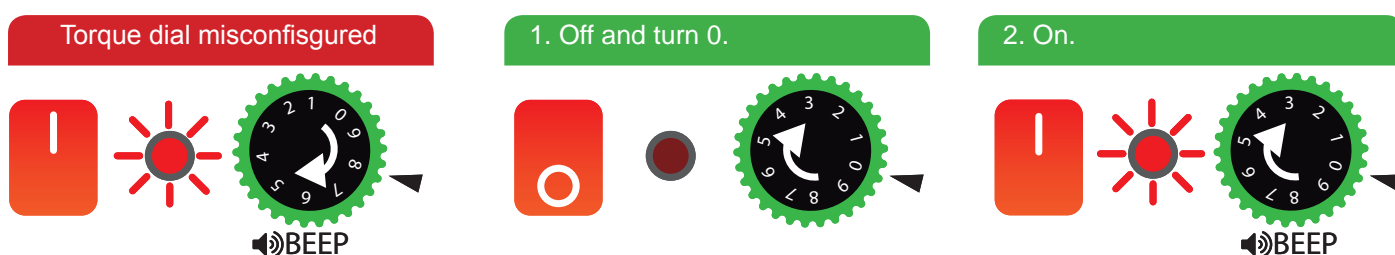
1. Switch on the tool from the main O – I switch.
2. Turns the torque and wrap dial one position **CLOCKWISE** to increase the torque and pay attention on the red LED flashes. If it flashes twice, the wraps of wire per tie will be 2.
3. For selecting 3 wraps of wire per tie, turn the torque and wrap dial **CLOCKWISE** and **GRADUALLY** till it reaches the 0 torque position. The BEEP signal will sound and the red LED will flash 3 times, indicating then the number of wraps per tie is set up on 3, having 10 torque positions ahead to be selected at your choice.
4. For selecting 2 wraps per tie back again, keep turning **CLOCKWISE** and **GRADUALLY** the dial till the 0 torque position, so as to get the red LED flashing twice.



### TORQUE AND WRAP DIAL MISCONFIGURED

The torque and wrap dial might get misconfigured if, by any reason (wrong operation / incorrect handling) or circumstance, the dial 0 torque position does NOT match with the BEEP sound signal. In this case, the tool needs to reset as follows.

1. Switch on the machine from the main switch, turn the torque and wrap dial clockwise and gradually till the BEEP signal sounds, regardless the torque position number that match with the arrow pointer.
2. Switch off the machine from the main switch and turn the dial clockwise till the 0 torque position matches the arrow pointer.
3. Switch the machine back on from the main switch. From now on the torque and wrap dial is set up properly again and the BEEP signal will sound at the 0 torque position, as long as the dial is turned **ALWAYS CLOCKWISE** and **GRADUALLY**



## EXAMPLES OF MISCONFIGURATION

1. The torque and wrap dial will get misconfigured if you are using the tool for example in torque 8 and then you switch off the machine and turning (clockwise or counter clockwise) the dial by mistake or oversight selecting another torque position. In this case the BEEP signal will not sound when selecting the 0 torque position, doing so in any other torque position. You must reset the machine following the above guidelines.
2. If you turn the torque and wrap dial counterclockwise you might get it misconfigured. You must reset the machine following the above guidelines.
3. If the dial is turned too fast and not gradually, you might get it misconfigured. You must reset the machine following the above guidelines.

## 7.3 FOR PROPER TYING PERFORMANCE

There are three tying areas inside the jaws. Depending where you place the rebar to be tied you will get different tying qualities and tightness. Find them as follows:

High performance and tightness



Medium performance and tightness



Low performance and tightness

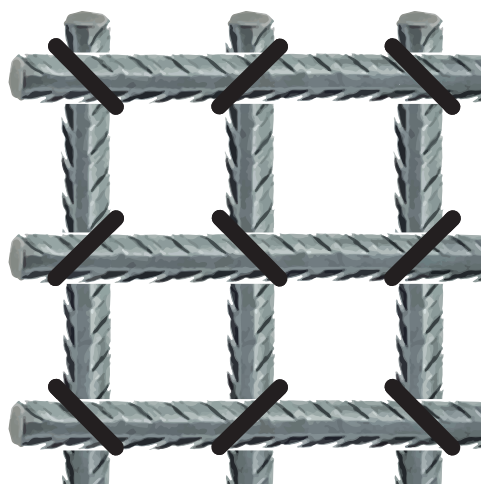


## 7.4 RECOMENDATIONS FOR TYING

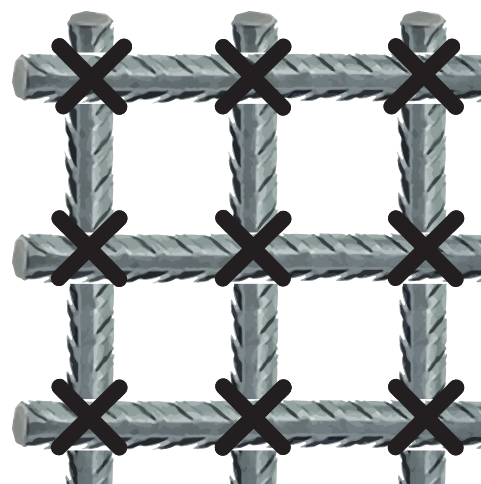
Keep the tying gun vertically and at 90° angle on top of the cross surface and push the jaws towards the rebar.



The ties should be made in alternating directions to ensure a much better fastening.



Cross-tying is recommended when tying rebar at walls or vertical cages. Bend down the knot of the first tie before making the second tie.



## 8 DIAGNOSIS OF PROBLEMS

The RE-BAR tier will eventually need maintenance service and replacement of worn parts due to normal wear and tear.

Troubleshooting and/or repairs are only to be carried out by authorised dealers or specialists.

The RE-BAR tier warns about malfunctions using beep sounds.



If one of the problems listed, set the main switch to 0 position, before trying to solve the issue. When the main switch is set to 1 - do not place your fingers near the curl guide or other moving parts of the machine. If the problem still occurs, contact your dealer.

Common failures	Warning sound signal	LED light	What to check	Possible cause	Solution
The tool does not work once the wire coil and battery are set up and the main switch is ON.	None	OFF 	Take out the battery and check if the electrodes are dirty or oxidized.	Electrodes are oxidized or dirty.	Clean the electrodes with a dry cloth.
	Beep	ON 	Confirm the battery is charged.	Battery is low or completely empty.	Replace the dead battery for a fully charged one. Recharge the dead one.
	Beep, beep, beep	ON, OFF, ON, OFF, ON, OFF 	Check the wire end is not bent or twisted.	The wire end is bent or twisted so it get caught in the wire guide.	Use the plier supplied to take out the wire end and cut it.
	Beep, beep, beep, beep	ON, OFF, ON, OFF, ON, OFF 	Check the curl guide to see if there is wire entangled inside.	The selected tension torque is too high.	Take out the entangled wire from the curl guide and readjust the tension torque.
No wire is sent out.	Beep, beep	ON, OFF, ON, OFF 	Check the curl guide.	The curl guide is open.	Close the curl guide.
			Check the diameter of the rebar to be tied.	The diameter of rebar exceed the max. tying diameter.	Use the correct rebar sizes according to the max. tying diameter of the tool.
	Beep, beep, beep.	ON, OFF, ON, OFF, ON, OFF 	Check if wire inside the reel has been loosened or tighten and caught.	Wire is caught inside reel.	Clear the entangled wire in the reel.
			Check the wire coil.	Wire has run out.	Set a new wire coil.
Irregular binding, the curl is disordered and steps out of the curl guide.	None	ON - 	Check if wire hits the rebar when tying operation.	Wire is repelled when hitting the rebar.	Pay attention so the wire does not hit the rebar when tying operation.
The wire is not cut right after the tying.	None	ON - 	Check if the cutting blade is in good working conditions.	The cutting blade is blocked by dirt, metal shavings or any other waste substances.	Either wipe the cutting blade with a dry cloth or blow with pressure air for cleaning.
The tying knot is loose, the tension torque is low.	None	ON - 	Confirm the rebar size to be tied.	The rebar size is too small to be tied.	Use correct rebar size and adjust the tension torque to a tighten position.
	None	ON - 	Check the operating instructions for correct tying.	Wrong tying operation.	Read the instruction manual for correct tying method.
The knot breaks down.	None	ON - 	Check the tension torque dial.	Excess of tension torque.	Readjust the tension torque to a loose position.

## 9 MAINTENANCE



When the tying gun Works for long hours, the metal dust and wire shavings can easily get into sensitive areas of the machine, such as the jaws, the cutting blade and the feeding gears. Check the rebar tying gun on a regular basis, clean the feeding gears, jaws and surrounding areas with a brush, air blow gun or vacuum cleaner.

Do NOT lubricate the rebar tying gun at all. This may seriously damage the tool and electronics.

## 10 STORAGE

The RE-BAR tier must not be stored in cold conditions. It should be kept at approx. 20°C. When the machine is not in use, it should be stored under warm and dry conditions. Keep the machine out of the reach of children.

## 11 DECLARATIONS ON MECHANIAL VIBRATIONS

The machine does not present any source of mechanical vibrations that cause risks to the health or safety of the operator.

## 12 SPARE PARTS

The spare parts for the bending and combined machines are to be found in the spare parts plan, attached to this manual. To order any spare part, please contact our after-sales service clearly indicating the serial number of the machine, model, manufacturing number and year of manufacturing that show on the characteristics plate.

## 13 ENVIRONMENT PROTECTION



Raw materials have to be collected instead of throwing away residuals. Instruments, accessories, fluids and packages have to be sent into specific places for ecological reutilisation. Plastic components are marked for selective recycling.



R.A.E.E. Residuals arising of electrical and electronic instruments have to be stored into specific places for selective collection.







C/ Albuñol, par.250  
Pol. Ind. Juncaril,  
18220 ALBOLOTE (Granada) ESPAÑA  
Telf: (+34)958 490 410  
Fax: (+34) 958 466 645  
[info@simasa.com](mailto:info@simasa.com)  
[www.simasa.com](http://www.simasa.com)