

Information

SRZY, Abrasive rolls, cylindrical and SRKE Abrasive rolls, conical

These abrasive rolls consist of wound coated abrasive material. Their construction guarantees a free-cutting tool; the outer coating wears during the grinding process which then allows new grain particle to be exposed. Their construction guarantees a free-cutting tool; the outer coating wears during the grinding process which then allows new grain particle to be exposed.

Examples of application

- deburring
- preparation work
- fettling

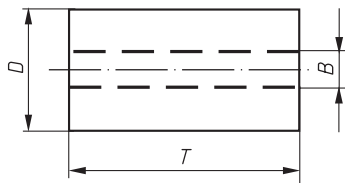
SRTR, Mandrels

Reusable mandrels for the safe mounting of cylindrical and conical abrasive rolls.

SRZY, Abrasive rolls, cylindrical



Ordering example: A2403006380600001

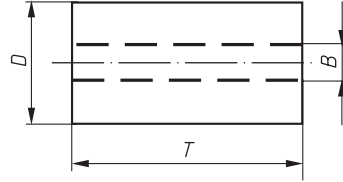


PG 8

Product number	Description	Grit	D mm	T mm	B mm	n max. (1/min)	Suitable mandrels	recommended for							Information on page 438	50
								1	2	3	4	5	7			
A2403006380600001	SRZY 0638	Ceramic 60	6	38	3	24.000	SRTR 3063.03 or SRTR 3063.06	1	2	3	4	5	7		50	
A2403006380800001	SRZY 0638	Ceramic 80	6	38	3	24.000	SRTR 3063.03 or SRTR 3063.06	1	2	3	4	5	7		50	
A2403006381200001	SRZY 0638	Ceramic 120	6	38	3	24.000	SRTR 3063.03 or SRTR 3063.06	1	2	3	4	5	7		50	
A2403010380600001	SRZY 1038	Ceramic 60	10	38	3	24.000	SRTR 3070.06	1	2	3	4	5	7		50	
A2403010380800001	SRZY 1038	Ceramic 80	10	38	3	24.000	SRTR 3070.06	1	2	3	4	5	7		50	
A2403010381200001	SRZY 1038	Ceramic 120	10	38	3	24.000	SRTR 3070.06	1	2	3	4	5	7		50	
A2403013380600001	SRZY 1338	Ceramic 60	13	38	3	24.000	SRTR 3070.06	1	2	3	4	5	7		50	
A2403013380800001	SRZY 1338	Ceramic 80	13	38	3	24.000	SRTR 3070.06	1	2	3	4	5	7		50	
A2403013381200001	SRZY 1338	Ceramic 120	13	38	3	24.000	SRTR 3070.06	1	2	3	4	5	7		50	

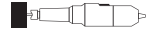
Grinding, Polishing (flexible)

SRZY, Abrasive rolls, cylindrical



Ordering example: A240300625080

NK = reg. Aluminium Oxide

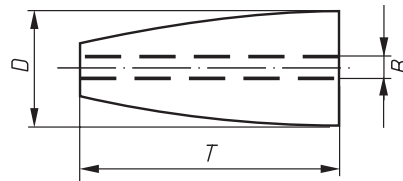


PG 8

Product number	Description	Grit	D mm	T mm	B mm	n max. (1/min)	Suitable mandrels	recommended for Information on page 438		
A240300625080	SRZY 0625	NK 80	6	25	3	24.000	SRTR 3063.03 or SRTR 3063.06	① ② ③ ④ ⑤ ⑥ ⑦ ⑧	■	50
A240300625150	SRZY 0625	NK 150	6	25	3	24.000	SRTR 3063.03 or SRTR 3063.06	① ② ③ ④ ⑤ ⑥ ⑦ ⑧	■	50
A240300638080	SRZY 0638	NK 80	6	38	3	24.000	SRTR 3063.03 or SRTR 3063.06	① ② ③ ④ ⑤ ⑥ ⑦ ⑧	■	50
A240300638150	SRZY 0638	NK 150	6	38	3	24.000	SRTR 3063.03 or SRTR 3063.06	① ② ③ ④ ⑤ ⑥ ⑦ ⑧	■	50
A240301025050	SRZY 1025	NK 50	10	25	3	24.000	SRTR 3063.03 or SRTR 3063.06	① ② ③ ④ ⑤ ⑥ ⑦ ⑧	■	50
A240301025080	SRZY 1025	NK 80	10	25	3	24.000	SRTR 3063.03 or SRTR 3063.06	① ② ③ ④ ⑤ ⑥ ⑦ ⑧	■	50
A240301025150	SRZY 1025	NK 150	10	25	3	24.000	SRTR 3063.03 or SRTR 3063.06	① ② ③ ④ ⑤ ⑥ ⑦ ⑧	■	50
A240301038050	SRZY 1038	NK 50	10	38	3	24.000	SRTR 3070.06	① ② ③ ④ ⑤ ⑥ ⑦ ⑧	■	50
A240301038080	SRZY 1038	NK 80	10	38	3	24.000	SRTR 3070.06	① ② ③ ④ ⑤ ⑥ ⑦ ⑧	■	50
A240301038150	SRZY 1038	NK 150	10	38	3	24.000	SRTR 3070.06	① ② ③ ④ ⑤ ⑥ ⑦ ⑧	■	50
A240301325050	SRZY 1325	NK 50	13	25	3	24.000	SRTR 3063.06	① ② ③ ④ ⑤ ⑥ ⑦ ⑧	■	50
A240301325080	SRZY 1325	NK 80	13	25	3	24.000	SRTR 3063.06	① ② ③ ④ ⑤ ⑥ ⑦ ⑧	■	50
A240301325150	SRZY 1325	NK 150	13	25	3	24.000	SRTR 3063.06	① ② ③ ④ ⑤ ⑥ ⑦ ⑧	■	50
A240301338050	SRZY 1338	NK 50	13	38	3	24.000	SRTR 3070.06	① ② ③ ④ ⑤ ⑥ ⑦ ⑧	■	50
A240301338080	SRZY 1338	NK 80	13	38	3	24.000	SRTR 3070.06	① ② ③ ④ ⑤ ⑥ ⑦ ⑧	■	50
A240301338150	SRZY 1338	NK 150	13	38	3	24.000	SRTR 3070.06	① ② ③ ④ ⑤ ⑥ ⑦ ⑧	■	50
A240302038050	SRZY 2038	NK 50	20	38	5	16.000	SRTR 5085.06	① ② ③ ④ ⑤ ⑥ ⑦ ⑧	■	50
A240302038080	SRZY 2038	NK 80	20	38	5	16.000	SRTR 5085.06	① ② ③ ④ ⑤ ⑥ ⑦ ⑧	■	50
A240302038150	SRZY 2038	NK 150	20	38	5	16.000	SRTR 5085.06	① ② ③ ④ ⑤ ⑥ ⑦ ⑧	■	50
A240302050050	SRZY 2050	NK 50	20	50	5	16.000	SRTR 5085.06	① ② ③ ④ ⑤ ⑥ ⑦ ⑧	■	50
A240302050080	SRZY 2050	NK 80	20	50	5	16.000	SRTR 5085.06	① ② ③ ④ ⑤ ⑥ ⑦ ⑧	■	50

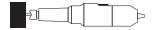
Grinding, Polishing
(flexible)

SRKE, Abrasive rolls, conical



Ordering example: A240401025050

NK = reg. Aluminium Oxide

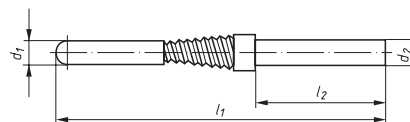


PG 8

Product number	Description	Grit	D mm	T mm	B mm	n max. (1/min)	Suitable mandrels	recommended for	Information on page 438		
A240401025050	SRKE 1025	NK 50	10	25	3	24.000	SRTR 3063.03 or SRTR 3063.06	① ② ③ ④ ⑤ ⑥ ⑦ ⑧		■	50
A240401025080	SRKE 1025	NK 80	10	25	3	24.000	SRTR 3063.03 or SRTR 3063.06	① ② ③ ④ ⑤ ⑥ ⑦ ⑧		■	50
A240401025150	SRKE 1025	NK 150	10	25	3	24.000	SRTR 3063.03 or SRTR 3063.06	① ② ③ ④ ⑤ ⑥ ⑦ ⑧		■	50
A240401325050	SRKE 1325	NK 50	13	25	3	24.000	SRTR 3063.06	① ② ③ ④ ⑤ ⑥ ⑦ ⑧		■	50
A240401325080	SRKE 1325	NK 80	13	25	3	24.000	SRTR 3063.06	① ② ③ ④ ⑤ ⑥ ⑦ ⑧		■	50
A240401325150	SRKE 1325	NK 150	13	25	3	24.000	SRTR 3063.06	① ② ③ ④ ⑤ ⑥ ⑦ ⑧		■	50
A240401338050	SRKE 1338	NK 50	13	38	3	24.000	SRTR 3070.06	① ② ③ ④ ⑤ ⑥ ⑦ ⑧		■	50
A240401338080	SRKE 1338	NK 80	13	38	3	24.000	SRTR 3070.06	① ② ③ ④ ⑤ ⑥ ⑦ ⑧		■	50
A240401338150	SRKE 1338	NK 150	13	38	3	24.000	SRTR 3070.06	① ② ③ ④ ⑤ ⑥ ⑦ ⑧		■	50
A240401638050	SRKE 1638	NK 50	16	38	3	16.000	SRTR 3070.06	① ② ③ ④ ⑤ ⑥ ⑦ ⑧		■	50
A240401638080	SRKE 1638	NK 80	16	38	3	16.000	SRTR 3070.06	① ② ③ ④ ⑤ ⑥ ⑦ ⑧		■	50
A240401638150	SRKE 1638	NK 150	16	38	3	16.000	SRTR 3070.06	① ② ③ ④ ⑤ ⑥ ⑦ ⑧		■	50
A240402050036	SRKE 2050	NK 36	20	50	5	16.000	SRTR 5085.06	① ② ③ ④ ⑤ ⑥ ⑦ ⑧		■	50
A240402050050	SRKE 2050	NK 50	20	50	5	16.000	SRTR 5085.06	① ② ③ ④ ⑤ ⑥ ⑦ ⑧		■	50
A240402050080	SRKE 2050	NK 80	20	50	5	16.000	SRTR 5085.06	① ② ③ ④ ⑤ ⑥ ⑦ ⑧		■	50
A240402050150	SRKE 2050	NK 150	20	50	5	16.000	SRTR 5085.06	① ② ③ ④ ⑤ ⑥ ⑦ ⑧		■	50

 Grinding, Polishing
(flexible)

SRTR, Mandrels



Ordering example: A32030130001

 $n_{max.}$: please refer to abrasive rolls on page 293–295


PG 8

Product number	Description	Type	d ₁ mm	l ₁ mm	d ₂ mm	l ₂ mm	recommended for	Information on page 438		
A32030130001	SRTR 3063.03	Inox	3	64	3	27			■	5
A32030160001	SRTR 3063.06	Inox	3	64	6	27			■	1
A32030260001	SRTR 3070.06	Inox	3	70	6	25			■	1
A32030460001	SRTR 5085.06	Inox	5	85	6	35			■	5

Material classification

1 Steels and Cast Steels

Rm up to 800 N/mm²

- common structural steels
- free cutting steels
- case hardened steels
- fine grained structural steels
- extruded steels
- toughened structural steels
- boiler plate
- nitrided steels
- cast steels
- heat treated steels
- heat resistant structural steels

2 Alloyed, Tempered Steels

Rm 800 up to 1200 N/mm²

- case hardened steels
- spring steels
- fine grained structural steels
- nitrided steels
- heat treated steels
- wear resistant steels
- bearing steels

3 Tool Steels

Rm up to 1300 N/mm²

- 60–65 HRC
- high-speed steels
- non-alloyed tool steels
- cold working tool steels
- hot working tool steels

4 Rust, acid and heat resistant Steels and Cast Steels

- austenitic
- ferritic
- ferritic-austenitic
- heat-resistant
- martensitic
- stainless, sulphurized

5 Cast Iron

6 Aluminium, Magnesium and Copper Alloys

- over 300 HB
- 200–300 HB
- up to 200 HB
- over 15% Si
- 10–15% Si
- 0,5–10% Si
- below 0,5% Si

7 Titanium and Nickel Alloys

- Rm 900 up to 1500 N/mm²
- Rm up to 900 N/mm²

8 Plastics, Wood, Rubber

9 Glass/Carbides

10 Stone/Tiles/Gas Cement

11 Concrete/Reinforced Concrete

12 Ceramic/Floor Tiles

13 Marble

14 Granite

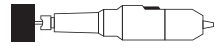
15 Freshly Poured Concrete

16 Asphalt

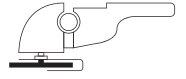
- best suitable
- suitable

- delivery ex-stock
- ▲ delivery on request

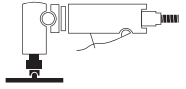
Power tools



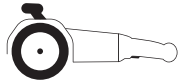
Straight grinder



Free-hand angle grinder



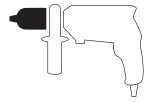
Pneumatic angle grinder



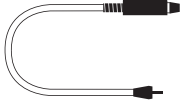
Conditioning machine



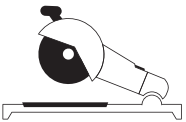
Backstand



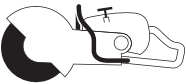
Boring machine



Flexible shaft grinder



Fixed-base cutting machine



Petrol-driven cutting machine

Product Lines

★★★ High Performance

★★☆ Industry

★☆☆ Base

Safety Symbols

(Depending on the product these symbols may vary)



Wear eye protection



Wear hearing protection



Wear a respirator



Read the instructions



Wear gloves



Only permitted with a back-up pad



Not permitted for wet grinding



Not permitted for face grinding



Do not use if damaged



Not permitted for hand-held or manually-guided grinding