



As a global enterprise, HSG sticks to providing professional and convenient service support to customers at home and board

- Professional Training**
Multiple technical training services and free operation training are provided for customers and dealers in a timely manner.
- Efficient Support**
Humanistic service model, online services and 7*24 hotline to offer solutions and assistance.
- Optimized Transport**
Multi-channel transport solutions and a professional transport solution team providing various transport cases to satisfy the demand of customers and save transportation fees.
- Sufficient Accessories**
Highly efficient accessory delivery service; multiple network inventories jointly respond to accessory demand, shortening customers' waiting times and accelerating production.
- Careful Services**
Domestic door-to-door service and free proofing, with over 100+ dealers providing efficient and convenient services.

Headquarters Add.: No. 4, Anye Road, Shunde District, Foshan, Guangdong, China
Website: www.hsglaser.com
Email: info@hsglaser.com
Tel: +86 757-66833906



Shape Metal, Shape Trust



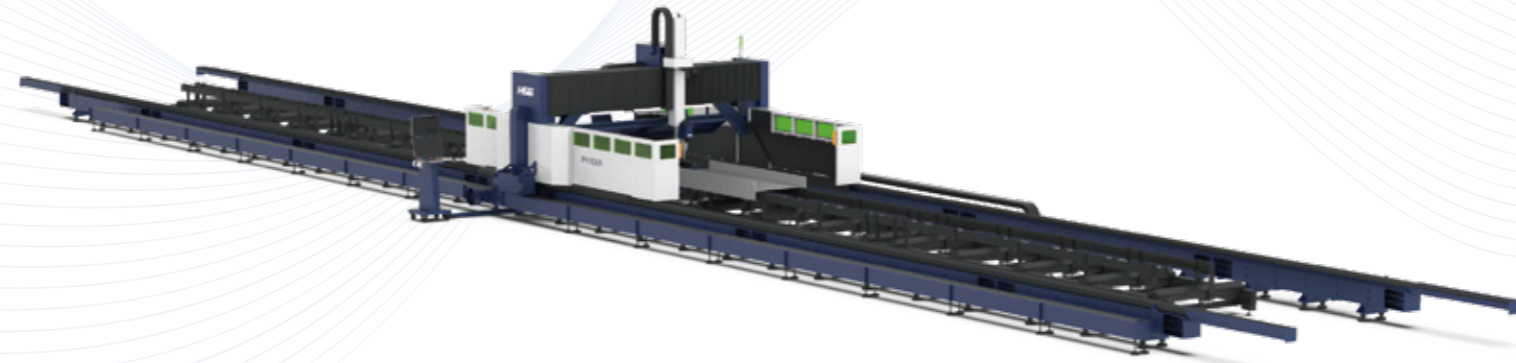
Website



Facebook



Youtube



PR1500B

Specific Sheet Fiber Laser Cutting Machine for the Steel Structure Industry

www.hsglaser.com

Version No.: 2024.08

Company Culture

- SLOGAN**
Shape Metal, Shape Trust
- MISSION**
To support the high-speed growth of our customers
- VISION**
To be a world-leading provider of metal shaping equipments & comprehensive solutions

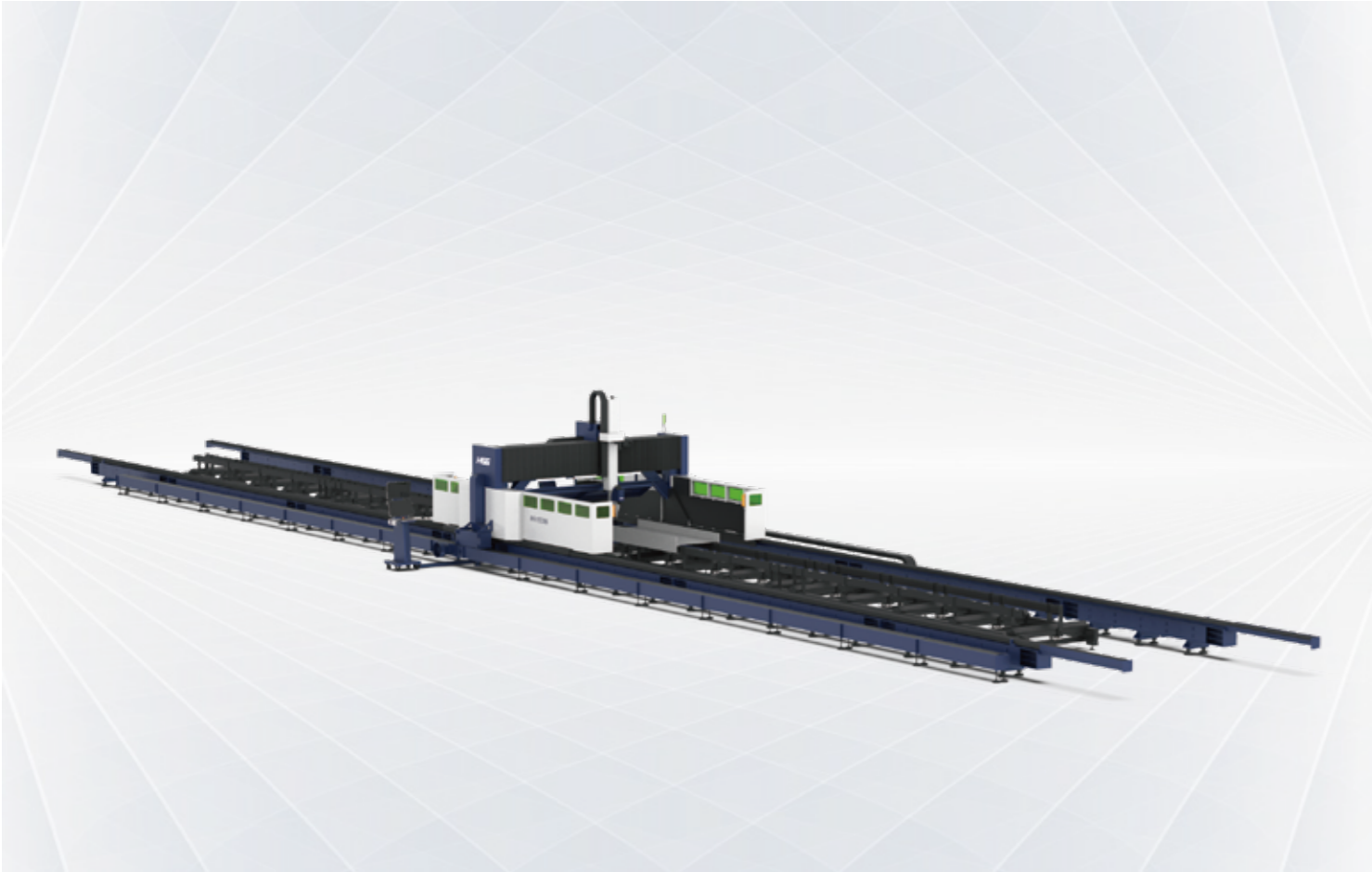
Company Profile

- 19** Global Branches
- 100+** Countries Covered
- 5** Manufacturing Bases
- 8,000+** Annual Capability
- 30+** Global Service Centers
- 135,000m²** Occupied Area

PR1500B

12000-20000W

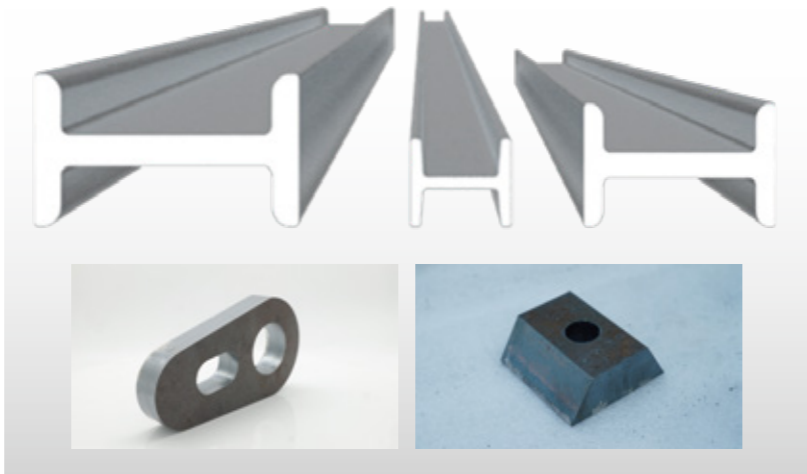
Specific Sheet Fiber Laser Cutting Machine for the Steel Structure Industry



Technical Parameters

Technical Parameters	PR1500B
Power	12000W-20000W
Processing format (L*W)	Sheet Metal: 28000*3000mm Beveling Processing: 27000*2500mm Section Steel: 12100*1500*500mm
X/Y-axis positioning accuracy	±0.15mm/m
X/Y-axis repositioning accuracy	±0.1mm
Max. Linkage Speed	80m/min
Max. Linkage Acceleration	0.5G

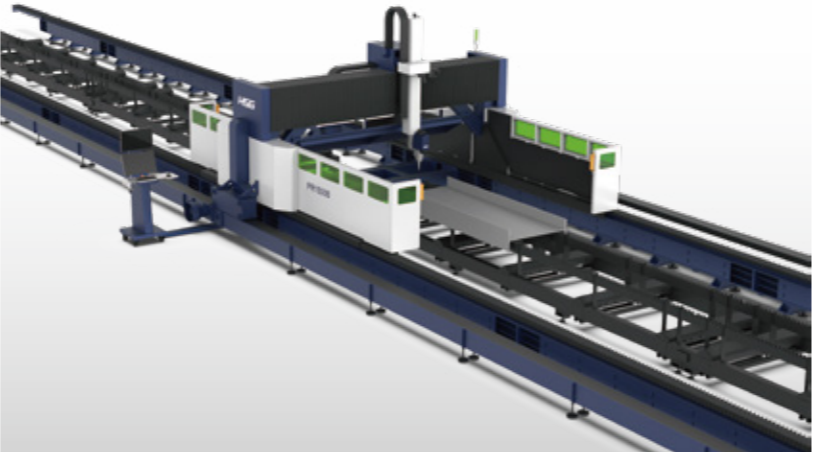
* Machine appearance, technical parameters, function description, data comparison shown in this page are from HSG in-house laboratory. All testing results and experimental data shall be subject to real machine.



- ▶ **Three-in-one cutting mode:**
Sheet Metal Cutting
Section Steel Cutting
Beveling Processing
- Equipped with multiple cutting modes, PR1500B Series can fully meet the demands of corresponding straight cutting and beveling processing for sheet and section steels.

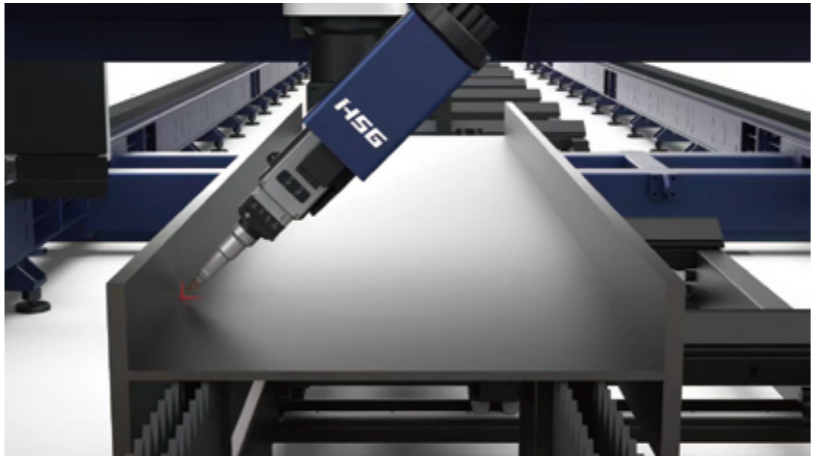
▶ **Multiple Safety Protection**

- There are protective sheet metal on both sides of the beam, effectively blocking the splashing of cutting sparks.
- Equipped with anti-burning plates, PR1500B Series can offer heat protection without heat damage worry.
- The safety protection glass on both sides allows for real-time observation of cutting conditions while providing protection.



▶ **Extra large-format requirements**

- Adopting independent modular design, single station (14m) and double station (28m) can be selected to meet the cutting Extra Large-format
- Design of different metal material combinations.
- The extra wide machine bed allows to be used for the beveling processing of 2.5m wide sheet metal.



- ▶ **One-Stop Specialized Solutions For Section Steel Cutting**
- Real-time measurement and compensation of section steel workpieces and drawings will be done through coarse positioning + fine positioning.The nesting software for the PR1500B series has strong compatibility with Tekla, users can enjoy intelligent control system through simple operations.

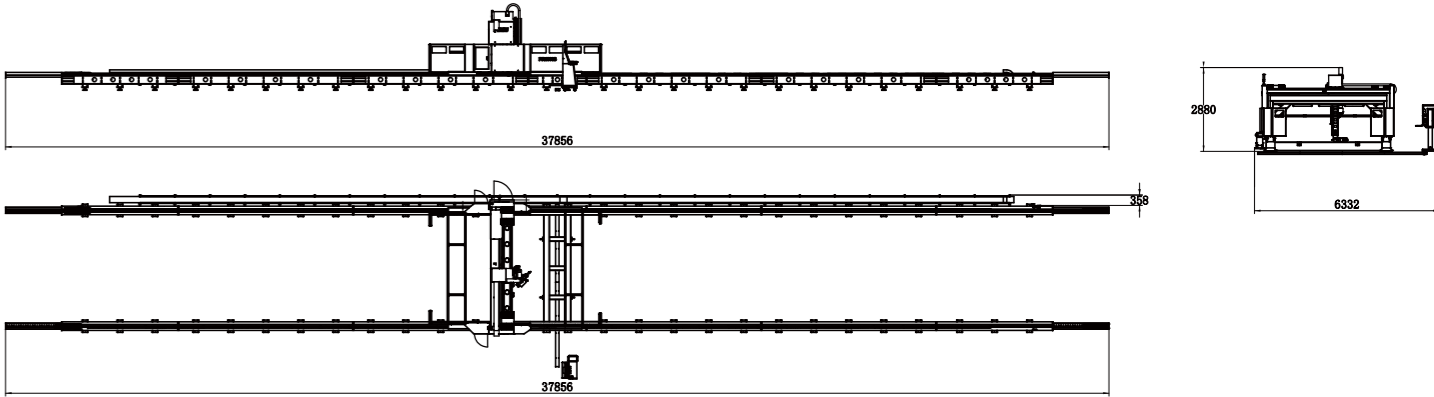


▶ **High-efficient Cutting Processing**

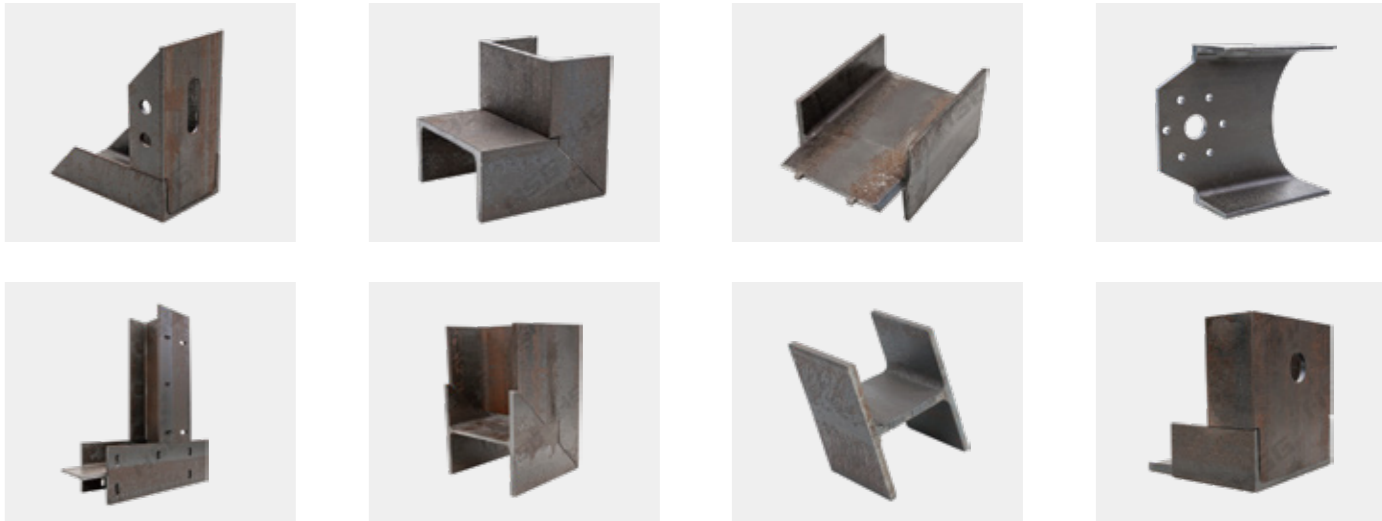
- The new generation of lightweight beam design, a maximum linkage speed up to 80m/min, has higher processing efficiency compared to conventional formats.

Machine Foundation

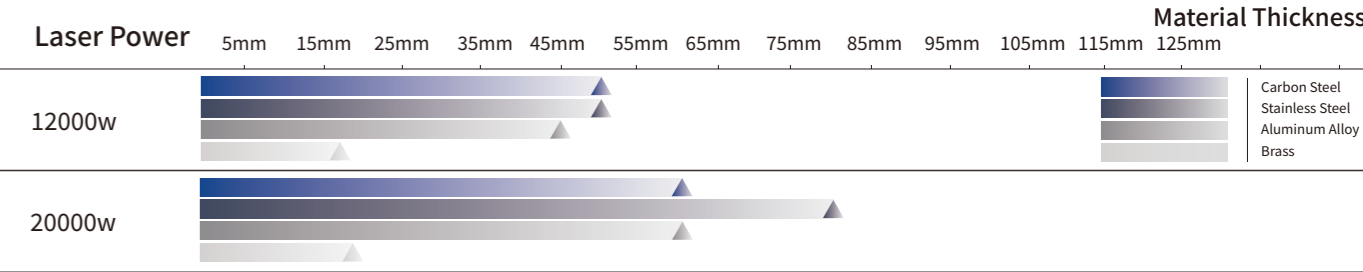
*The marked size has about 10mm error



Cutting Samples



Cutting Capacity



The actual machines shall prevail and above data & pictures are only for reference.