

/ BROKK 900 ROTOBOOM

Brokk 900 Rotoboom is the heaviest robot Brokk offers and with a reach at an incredible 10 meters it takes processing applications to a new level. With reliable SmartPower™ and 360-degree arm rotation this robot holds unbeatable capacity for heavy and demanding demolition and maintenance work in the metal processing industry. Equipped with Brokks unique heat and impact-protected process breaker it is perfect for working with hot ladles, converters, runners, and furnaces. In addition, the maneuvering has been improved to enable precision work in a completely new way.

- Specifically designed for tough metal processing applications
- Rotating arm system provide optimal flexibility
- Patented heat-shielded process breaker
- Diesel or electric powered



Hydraulic breaker in images: heat protected BHB 455
Load and stability diagram available on request



TECHNICAL DATA

Slewing speed	16 sec/360°
Transport speed, max.	2.8 km/h; 1.7 mph
Climbing inclination, max.	30°
Hydraulic system capacity	230 l; 60.8 US gal
Pump type	Variable load-sensing
System pressure	18.5 MPa; 2683 psi
Increased pressure to attachment	25 MPa; 3626 psi
Pump flow	Diesel/50 Hz el. motor 148 l/min; 39 US gal/min
	60 Hz el. motor 178 l/min; 47 US gal/min
Power technology	SmartPower™
Electric motor type	ABB
Power*	71 kW
Recommended fuse size*	125 A
Starting device	Soft start
Diesel performance - Type 1)	Kohler Four-cylinder, water-cooled, 4-stroke engine
Engine	55,5 kW; 74 hp diesel EPA Tier 4, EU Stage V
Engine oil volume	15.6 l; 4.1 US gal
Diesel performance - Type 2)	Kubota Four-cylinder, water-cooled, 4-stroke engine
Engine**	55,5 kW; 74 hp diesel EPA Tier 3, EU Stage IIIA
Engine oil volume	13.2 l; 3.5 US gal
Fuel tank capacity	80 l; 21.1 US gal
Freezing point	-40 °C; -40°F
Control type	SmartRemote™, portable
Signal code	Digital
Transfer	Professional radio/Cable
Range, radio	Up to 300 m
Machine weight***	11,600 kg; 25,574 lbs
Recommended attachment weight	600 kg; 1323 lbs
Sound power level L_{WA}**** El:	99 dB(A)

*Valid for 400 V/50 Hz and 440 V/60 Hz

**Rated power 74 kW: 99.2 hp at 2600 rpm (SAE J1995)

***Excluding options and attachment

****Measured according to directive 2000/14/EC, excl. attachment

OPTIONS

Extra cylinder protection

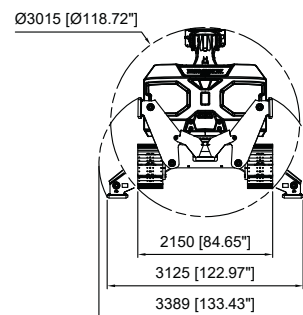
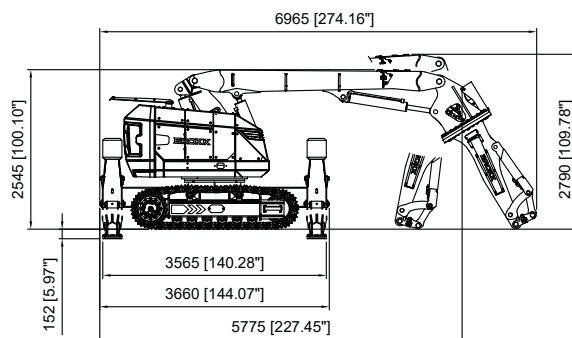
Forced draft cooling for machine

Forced draft cooling for breaker

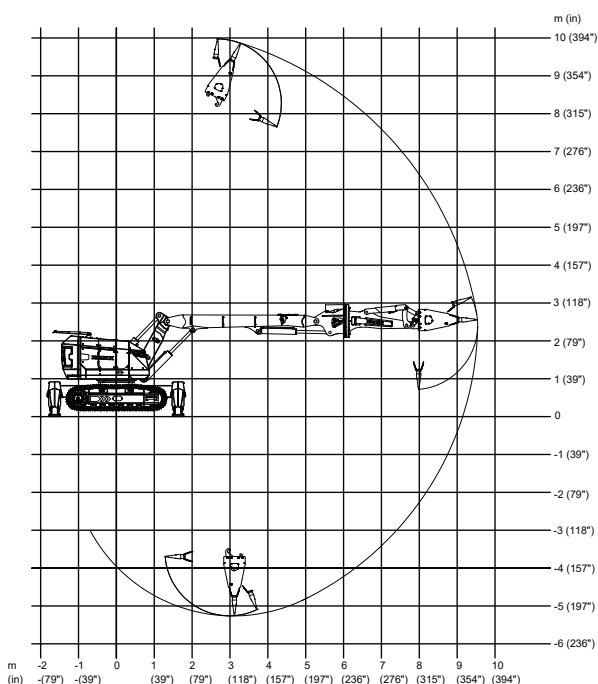
Lifting eyes (regular lifting points are standard)

Motion warning

SIZE



RANGE



Tolerances for technical data may vary