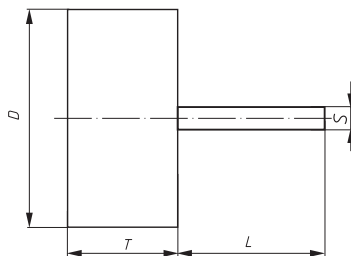


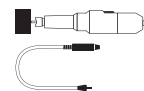
SFL, Flap wheels



Ordering example: A2200010103080

Further dimensions, qualities and shank lengths on request

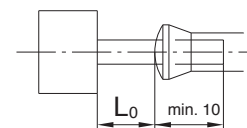
NK = reg. Aluminium Oxide



PG 14

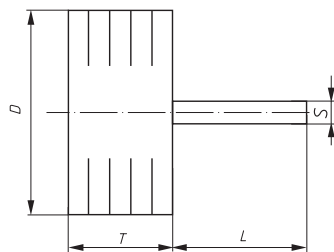
Product number	Description	Grit	D mm	T mm	S mm	L mm	n recom. (1/min)	n max. (1/min)	recommended for Information on page 438		
A2200100408060	SFL 10040.08	NK 60	100	40	8	40	5.000	7.500	① ② ③ ④ ⑤ ⑥ ⑦ ⑧	■	10
A2200100508060	SFL 10050.08	NK 60	100	50	8	40	5.000	7.500	① ② ③ ④ ⑤ ⑥ ⑦ ⑧	■	10
A2200100508080	SFL 10050.08	NK 80	100	50	8	40	5.000	7.500	① ② ③ ④ ⑤ ⑥ ⑦ ⑧	■	10
A2200100508150	SFL 10050.08	NK 150	100	50	8	40	5.000	7.500	① ② ③ ④ ⑤ ⑥ ⑦ ⑧	■	10

The stated maximum operating speed only applies to a maximum overhang L_0 of 20 mm.



Grinding, Polishing (flexible)

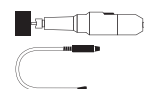
SFB, Slotted flap wheel



Ordering example: A2220040206080

Further dimensions, qualities and shank lengths on request

NK = reg. Aluminium Oxide



PG 14

Product number	Description	Grit	D mm	T mm	S mm	L mm	n recom. (1/min)	n max. (1/min)	recommended for Information on page 438		
A2220040206080	SFB 04020.06	NK 80	40	20	6	40	12.000	19.100	① ② ③ ④ ⑤ ⑥ ⑦ ⑧	■	10
A2220050206080	SFB 05020.06	NK 80	50	20	6	40	9.000	15.300	① ② ③ ④ ⑤ ⑥ ⑦ ⑧	■	10
A2220050306120	SFB 05030.06	NK 120	50	30	6	40	9.000	15.300	① ② ③ ④ ⑤ ⑥ ⑦ ⑧	■	10
A2220060306080	SFB 06030.06	NK 80	60	30	6	40	8.000	12.700	① ② ③ ④ ⑤ ⑥ ⑦ ⑧	■	10
A2220060306120	SFB 06030.06	NK 120	60	30	6	40	8.000	12.700	① ② ③ ④ ⑤ ⑥ ⑦ ⑧	■	10

By slotting the lamellas on the periphery, the flexibility of this type of mounted wheel is increased.

The slotted flap wheel quickly profiles itself to the contour of the workpiece.

The stated maximum operating speed only applies to a maximum overhang L_0 of 20 mm.

