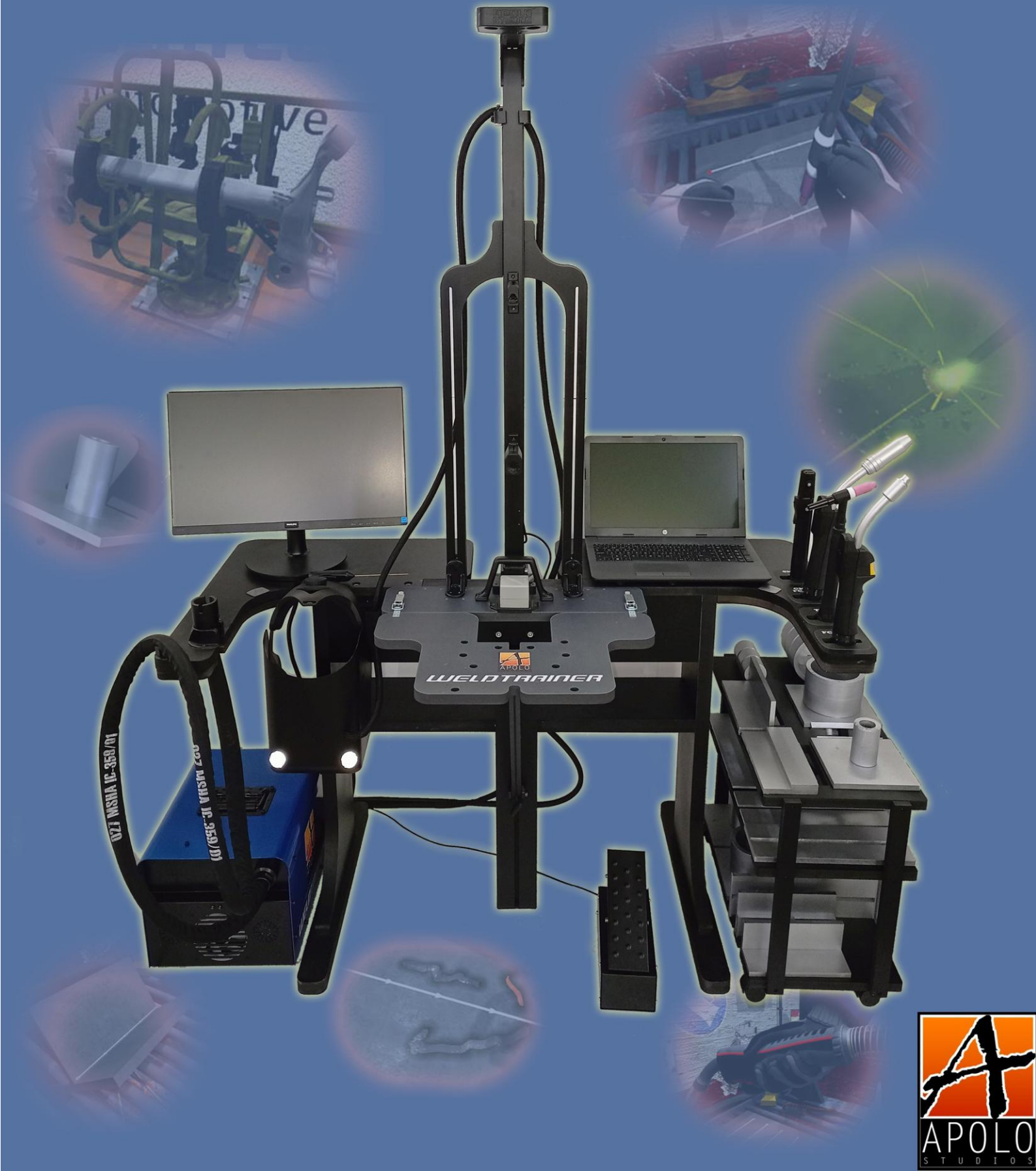


WELDING SIMULATOR

WELDTRAINER

2024 EDITION

WELDING TRAINING IN THE MOST PRECISE, EFFECTIVE AND RELIABLE WAY



WELDTRAINER

WELDTRAINER 2024 EDITION READY FOR ORDERS

SUMMARY

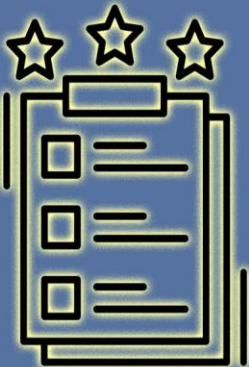


WeldTrainer is a welding simulator powered by the most advanced technology and the smartest design to provide the most precise, authentic, effective and reliable welding simulation.

After more than 13 years available in the market and continuous evolution and improving, the latest iteration of the WeldTrainer now available provides the pinnacle of the true nature of a professional welding simulator meant to take the training of new welders to a new dimension.

Massive cost savings, vastly increased productivity, reliable and effective brain muscular training, safe and more attractive working environment, great accessibility, easiness of use, fast and smooth machine interaction full of possibilities, all in the same package at an unbeatable price.

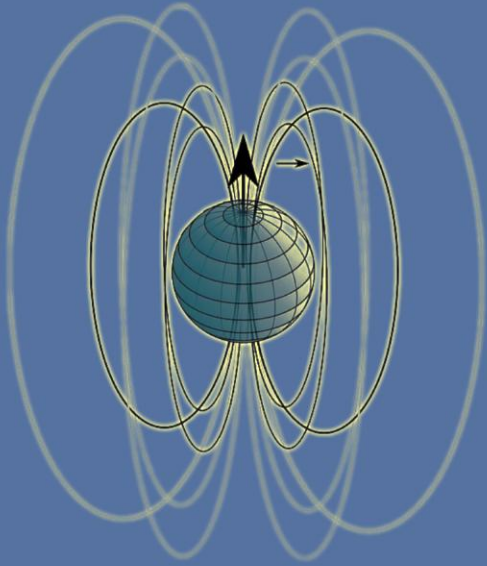
KEY FEATURES



- Best in world tracking technology tightly integrated into the hardware and software to provide the most precise, authentic and reliable welding simulation.
- Sub millimeter accuracy in the spatial detection of the welding torches, without latency and without technical restrictions that compromise the effectiveness, reliability and veracity of the training.
- Simulation totally driven by the user actions, 100% free of prebaked behaviours, maked up results, dubious veracity or compromised user feedback.
- Highly sophisticated custom working table offering unmatched functionality, easiness of use, high productivity, great sturdiness and accessibility.
- Provides learning tools impossible to replicate in real welding.
- Designed to provide the most healthy shared use among different users.



BEST IN WORLD ELECTROMAGNETIC TRACKING TECHNOLOGY

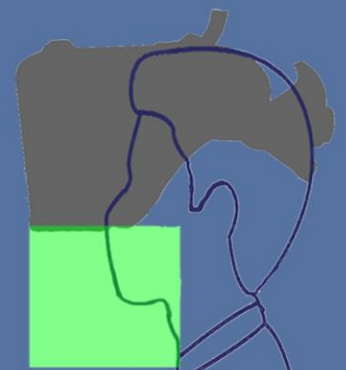


- Unbeatable electromagnetic tracking technology to detect the exact position and orientation in the working space of the welding tools.
- Uninterrupted data flow under any circumstance.
- No latency in the captured data with no lines of sight limitations.
- No restrictions of use in the working environment without highly variable tracking performance dependant on user actions.
- Fully transparent to the user experience, hence no need of existence of awkward, unaesthetic and unreliable hardware elements.
- Tightly integrated with custom proprietary hardware and software to maximize the full potential and advantages of the technology.

CUSTOM HELMET AND AUDIOVISUAL SYSTEM



- Custom display and welding helmet designed to maximize the adaptability to the variable physiognomy among users.
- Cristal clear display free of image distortion and visual fatigue for the user even after long sessions.
- Ready to use for users wearing glasses.
- Floating design with no other physical contact apart from two easily wipeable foamed bands.
- Designed to promote healthy and hygienic use among users by forcing the breathing air flow of the user to always circulate outside.
- Integrated audio free of unsanitary headphones.
- Light weight, sleek cable management and strong protection of internal components.

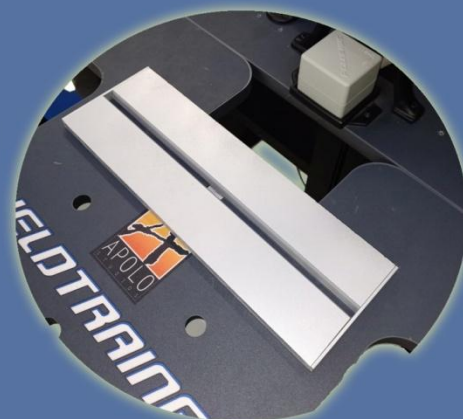
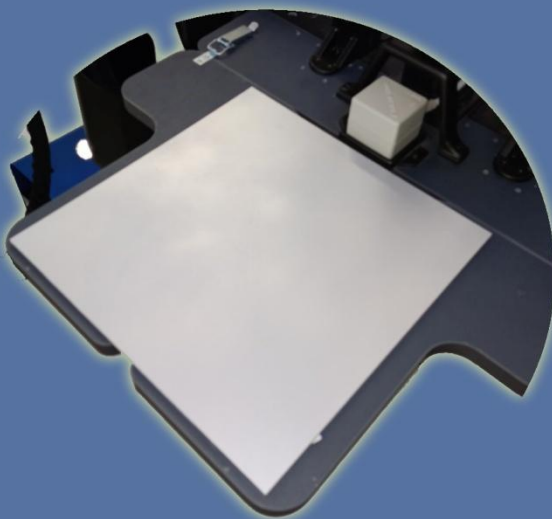
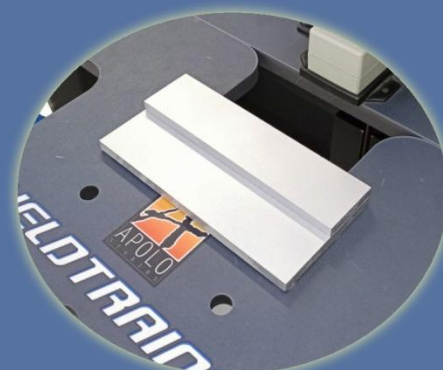
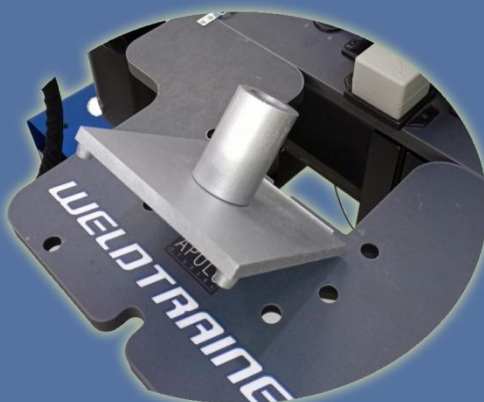
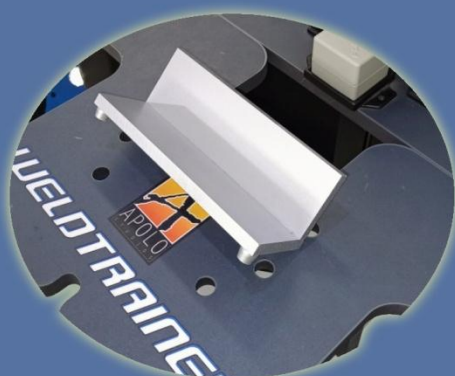
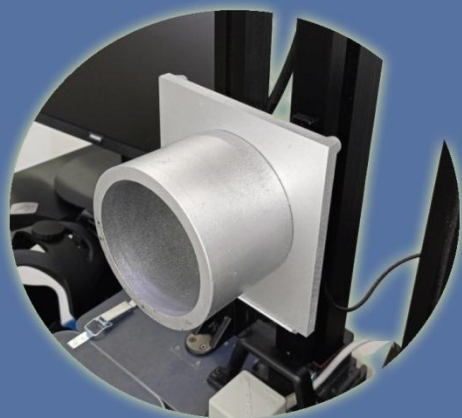


CUSTOM WORKTABLE AND WORKPIECES



- Custom worktable designed to provide an optimal workspace for the use of the simulator.
- Allows the user to weld standing on a chair or standing on feet for every welding position, being able to lean firmly on the tray for both options.
- Adaptable in height to any user preference.
- Provides a fast and precise coupling of every workpieces in any welding position.
- Provides a robust and practical holder for every component of the simulator and optimal cable management.
- Provides great accessibility without external assistance for the user.
- Auxiliary table included for accessible and safe workpieces storage and access.

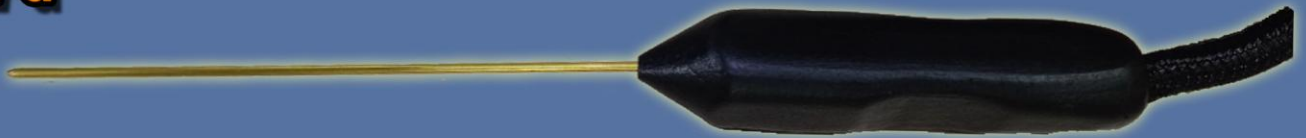
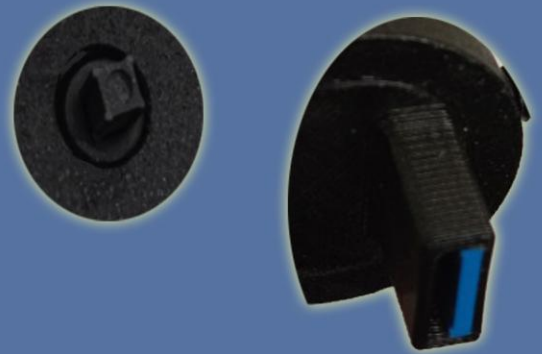
CUSTOM WORKTABLE AND WORKPIECES



CUSTOM WELDING TOOLS

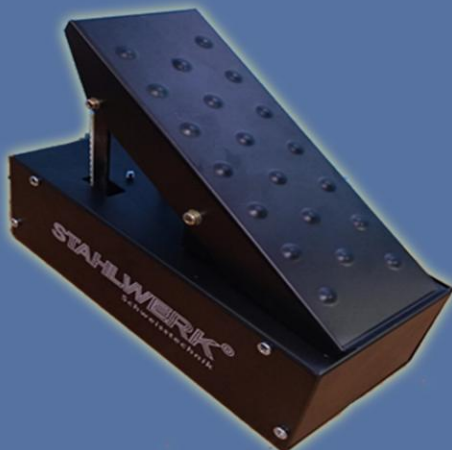


- Four different torches included plus filler rod for TIG welding.
- Same weight as real ones.
- Free of mandatory cumbersome accessories.
- Very fast and clean swap mechanism.
- Integrated micro joystick in every torch for full system navigation.
- Integrated USB connection.



TIG PEDAL

- Real machine TIG pedal.



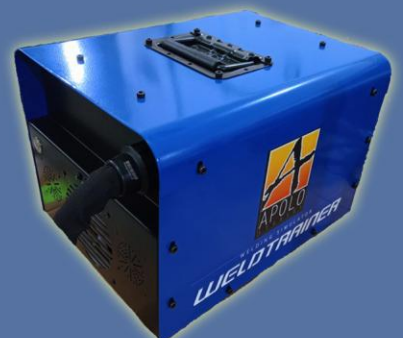
HAPTIC FEEDBACK

- Haptic feedback present for every torch and TIG filler rod.

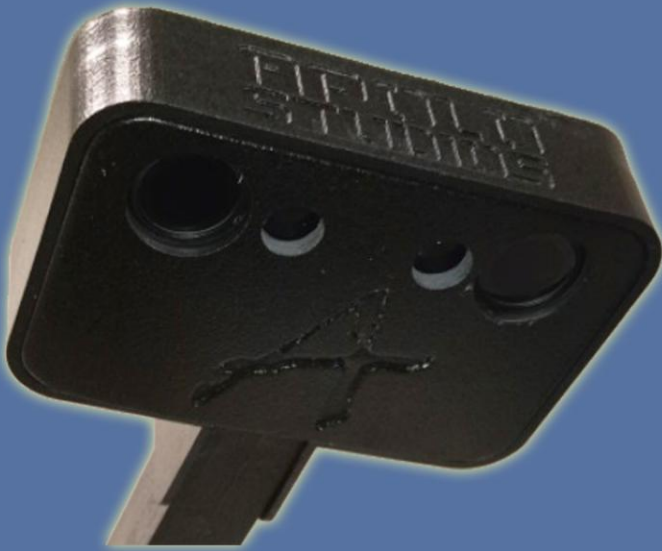


NEW CHASSIS

- New optimized chassis featuring 30% less volume while hosting more powerful computer components.
- Smallest and lightest in the market.



INFRARED DUAL CAMERA



- Integrated dual infrared camera for head tracking of the user.
- Over the head design meant to be transparent and non invasive to the user experience.
- Required line of sight guaranteed for every exercise by design.
- Works in tandem with the infrared reflectors on top of the helmet.

FAST TORCHES SWAP SYSTEM



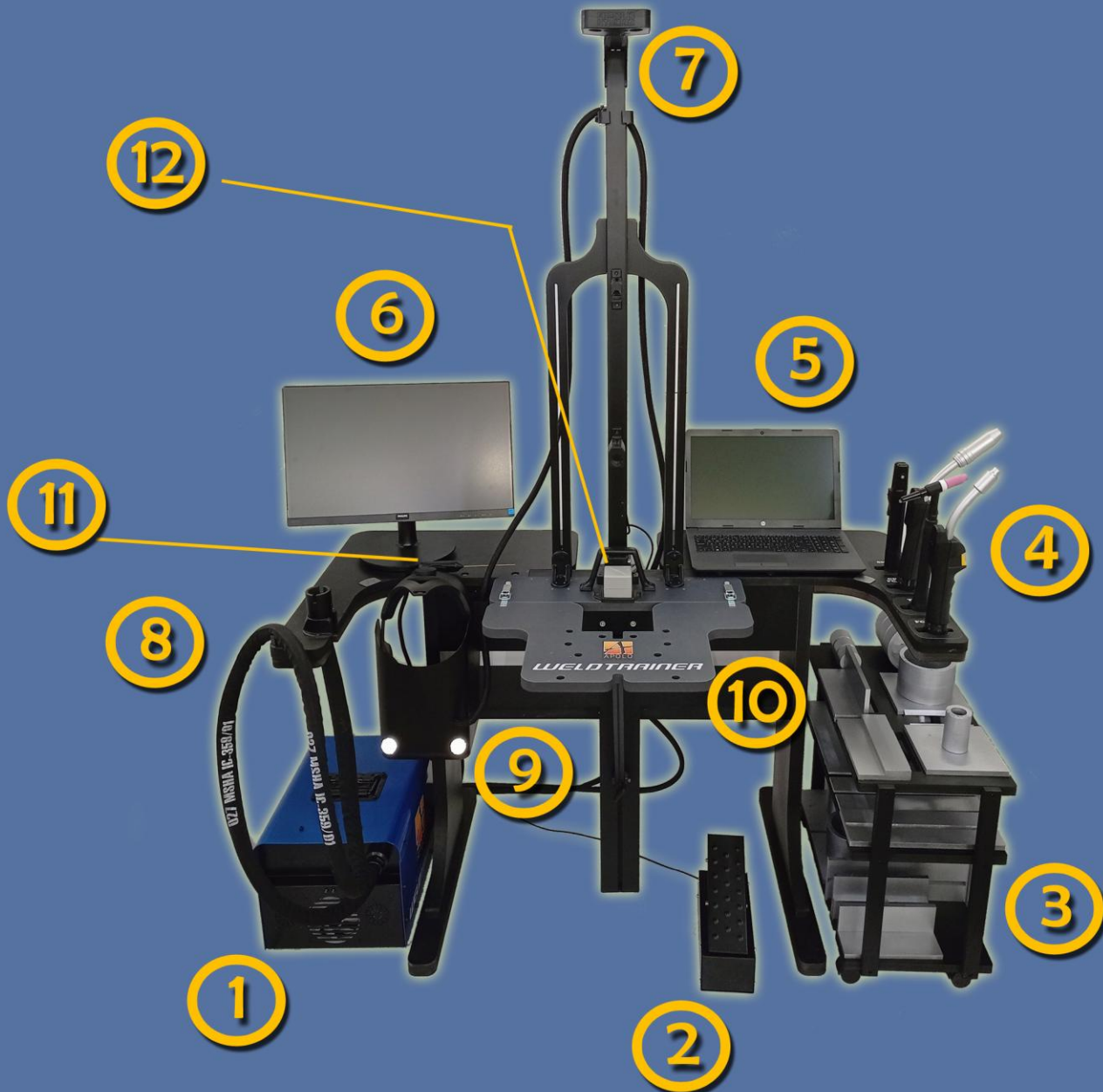
- Proprietary torches swap system.
- Fast, clean and secure mechanism.
- Strongly minimizes the possibility of accidentally dropping the torch when being swapped.

EXTERNAL MONITOR AND INSTRUCTOR POSITION LAPTOP



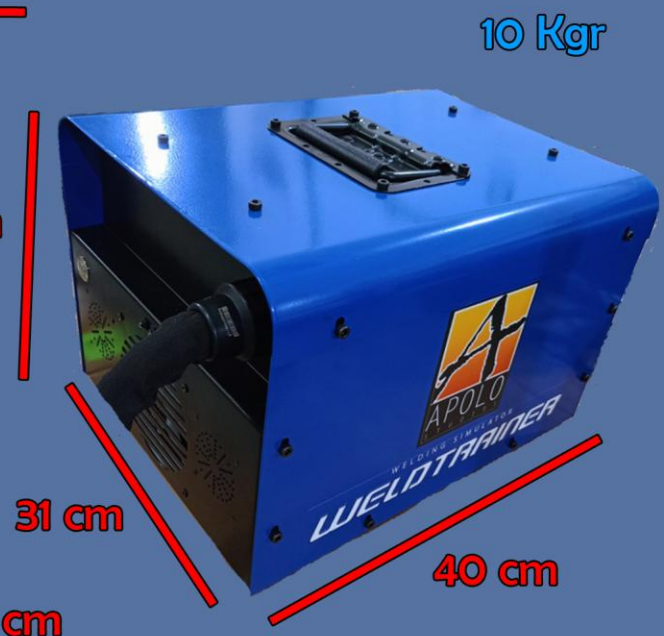
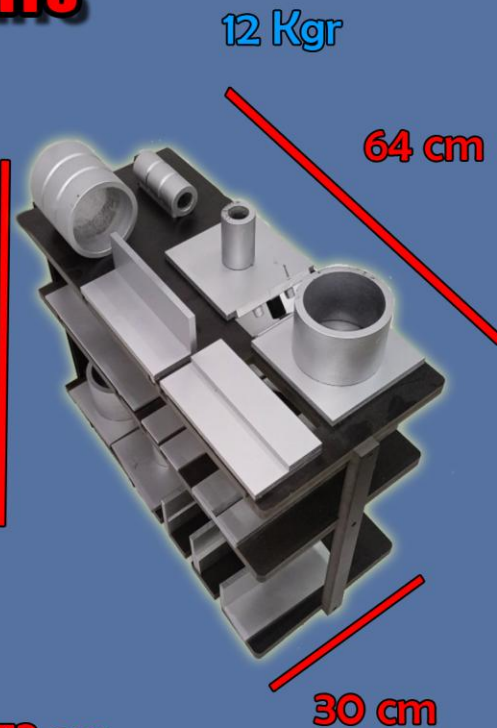
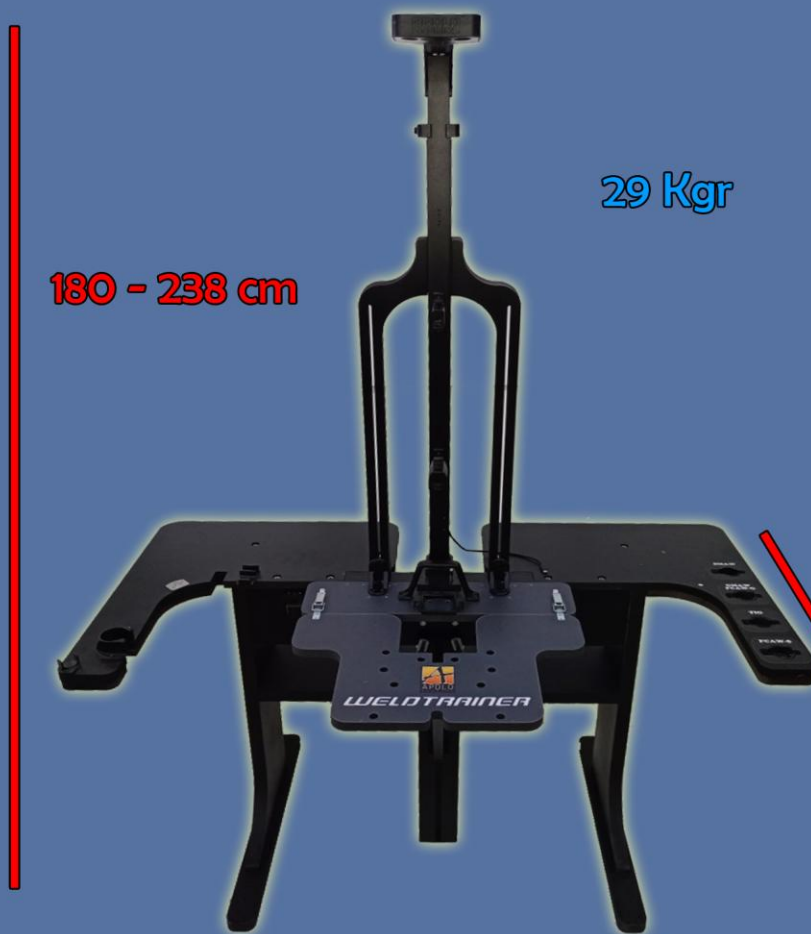
- Included laptop for instructor position software management and use.
- Included monitor for external visualization of the simulation.

WHAT IS IN THE BOX



- 1: Main chassis with all computer elements inside.
- 2: TIG pedal.
- 3: Wheeled auxiliary table + 14 individual workpieces.
- 4: Four welding torches (SMAW, GMAW, TIG, FCAW).
- 5: Laptop with instructor position software.
- 6: External monitor.
- 7: Infrared dual camera + holder with workpieces coupling parts.
- 8: Main hose with base for torches connection including magnetic sensor inside.
- 9: Custom helmet with audio visual system inside plus infrared reflectors.
- 10: Worktable made of 14 individual parts.
- 11: TIG filler rod including magnetic sensor inside.
- 12: Electromagnetic field source emitter.

DIMENSIONS AND WEIGHTS



SUPPORT AND WARRANTY



- 2 years warranty for the hardware.
- Lifetime warranty for the software with no costs for the software updates.
 - Worldwide shipping.
- Direct support from the manufacturer.
- 100% proprietary hardware and software.
 - 100% designed in house.

WELDING SIMULATOR

WELDTRAINER

