



ATTACHMENTS 2024



Introduction

SHERPA mini-loaders is one of the leading manufacturers of employee-friendly road construction equipment in Europe.

As an innovative developer of the SHERPA mini-loaders and other advanced building equipment, especially for the pavement sector, we have been working hard to provide our customers and dealers with a fully labour-relieving program.

Our SHERPA mini-loaders are designed in such a way that everyone can work with them. Heavy and difficult work belongs to the past when you make use of our machines and tools.

You're investing in a healthy and productive future of your employees with equipment, tools and SHERPA mini-loaders from SHERPA mini-loaders!



....Made in Holland

Copyright © 2013-2024 SHERPA mini-loaders
All rights reserved.

Any form of reproduction, reprinting or unauthorized use without the written permission of SHERPA mini-loaders is strictly prohibited.

SHERPA

Z&S-SERIES

Z&S-SERIE ATTACHMENTS



Bucket 76cm Z

For transporting and levelling of sand and gravel.

Article:	120101-076-1
Dimensions in cm(W x D x H):	76 x 56 x 39
Volume:	87l
Weight:	64 KG



Bucket 85cm Z

For transporting and levelling of sand and gravel.

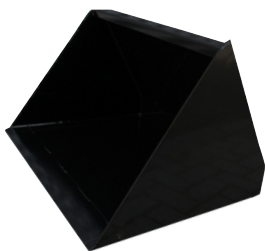
Article:	120101-085-1
Dimensions in cm(W x D x H):	85 x 56 x 39
Volume:	98l
Weight:	70 KG



Bucket 111cm Z

For transporting and levelling of sand and gravel.

Article:	120101-112-1
Dimensions in cm(W x D x H):	111 x 56 x 39
Volume:	127l
Weight:	86 KG



Volume bucket 76cm Z

For moving sand, ground, gravel or other loose materials.

Article:	120102-076-1
Volume:	170l
Dimensions in cm(W x L x H):	76 x 48 x 48
Volume:	170l
Weight:	72kg



Volume bucket 111cm Z

For moving sand, ground, gravel or other loose materials.

Article:	120102-112-1
Volume:	250l
Dimensions in cm(W x L x H):	111 x 74 x 63
Volume:	250l
Weight:	104kg

Z&S-SERIE ATTACHMENTS



Pin Bucket 112cm Z

For moving, lifting, tilting and breaking out street work, turf and other surfaces.

Article:	120202-112-1
Dimensions in cm(W x D x H):	112 x 86 x 39
Weight:	97kg



Set Pallet forks Z

For moving pallets and solid materials.
Pallet board included.

Article:	120301-1
Fork length:	80cm
Min. width:	17cm
Max. width:	70cm
Weight:	85kg



Carpet-remover Z

For removing various floor coverings from a concrete surface. Including 7 x 7mm blades.

Article:	120603-1
Dimensions in cm(W x D x H):	76 x 46 x 45
Weight:	190kg
See options for all available blade sizes.	



Lifting arm Z

For lifting loads using a load hook, hoisting chain or in combination with a stone clamp and suction cups.

Article:	120701-1
Lifting hook:	02110
Bow Shackle 1T:	02180



Trailer hitch Z

For shunting trailers, suitable for ø50mm towball.
Includes ø50mm ball.

Article:	1201202-1
Dimensions in cm(W x D x H):	60 x 22 x 20
Weight:	14kg

Z&S-SERIE HYDRAULIC



Pinbucket with clamp 76cm Z

For moving "lifting" and "tipping" debris, manure, green waste or other loose materials.

Article:

120301-076-1



Hydraulic manure forks with clamp 76cm Z

For moving "lifting" and "tipping" of manure, straw, hay, grass and such.

Article:

120201-076-1

Dimensions in cm(W x D x H):

76 x 60 x 51-80

Weight:

70kg



Bucket with grab 76cm Z

For moving "lifting" and "tipping" debris, manure, green waste or other loose materials.

Article:

120103-076-1

Dimensions in cm(W x D x H):

76 x 63 x 52-72

Weight:

87kg (without sideplates)

(Option) sideplates set:

00504-ZP



Bucket with grab 85cm Z

For moving "lifting" and "tipping" debris, manure, green waste or other loose materials.

Article:

120103-085-1

Dimensions in cm(W x D x H):

85 x 63 x 52-72

Weight:

96kg (without sideplates)

(Option) sideplates set:

00504-ZP



Bucket with grab 111cm Z

For moving "lifting" and "tipping" debris, manure, green waste or other loose materials.

Article:

120103-112-1

Dimensions in cm(W x D x H):

111 x 63 x 52-72

Weight:

115kg (without sideplates)

(Option) sideplates set:

00504-ZP

Z&S-SERIE HYDRAULIC



Demolition hammer, GlobRam® RM40 Z

Used for 76cm wide miniloaders

Coupling plate and round chisel included.

Article:	120901-RM40-1
Impact energy:	140 Joule
Weight:	60kg (without coupling plate and chisel)



Loose chisels for RM40:

Round:	00946-SBR
Flat/round:	00946-SBP
Flat/wide:	00946-SBPV



Demolition hammer, GlobRam® RM45b Z

Used for 112cm wide miniloaders

Coupling plate and round chisel included.

Article:	120901-RM45B-1
Impact energy:	195 Joule
Weight:	65 KG (without coupling plate and chisel)



Loose chisels for RM45b:

Round:	00945-SBR
Flat/round:	00945-SBP
Flat/wide:	00945-SBPV



Hydraulic log grab Z

For grabbing several small trunks or for grabbing a large trunk per unit.

Article:	120501-1
Dimensions in cm(W x D x H):	26 x 68 x 60
Weight:	77kg

Z&S-SERIE HYDRAULIC



Hydraulic weed brush without brush Z

For removing weeds between stones or for cleaning gutters and sidewalks. Excluding brush, including fender.

Article:	120401-1
Dimensions in cm (L x W x H):	60 x 124 x 65
Weight:	50kg



Hydraulic weed brush steel Z

For removing weeds between stones or for cleaning gutters and sidewalks.

Article:	00937-1-B
Diameter brush:	±80cm
Weight:	25kg



Hydraulic weed brush V2 steel Z

For removing weeds between stones or for cleaning gutters and sidewalks.

Article:	00937-1-BE
Diameter brush:	±80cm
Weight:	16,5kg



Hydraulic snow- / feed slider Z

For moving "shifting" feed, straw, silage, snow or other loose materials.

Article:	120602-1
Dimensions in cm (W x D x H):	110 x 65 x 48
Weight:	97kg



Roller broom Z

For cleaning hard surfaces.

Article:	120402-1
Dimensions in cm (W x D x H):	126 x 92 x 75
Weight:	105kg

SHERPA
100/150

100/150 ATTACHMENTS



Bucket 76cm SH1

For transporting and levelling of sand and gravel.

Article:	00449
Volume:	87l
Dimensions in cm(W x L x H):	76 x 62 x 39
Weight:	64kg



Bucket 85cm SH1

For transporting and levelling of sand and gravel.

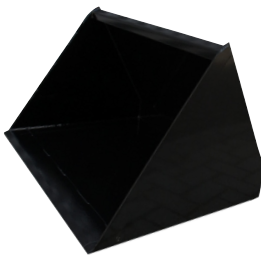
Article:	00450
Volume:	98l
Dimensions in cm(W x L x H):	85 x 56 x 39
Weight:	70kg



Bucket 111cm SH1

For transporting and levelling of sand and gravel.

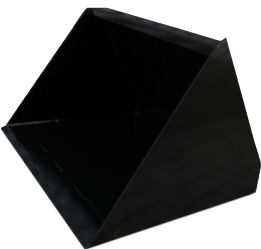
Article:	00500
Volume:	127l
Dimensions in cm(W x L x H):	111 x 56 x 39
Weight:	86kg



Volume bucket 76cm SH1

For moving sand, ground, gravel or other loose materials.

Article:	00495-76
Volume:	170l
Dimensions in cm(W x D x H):	78 x 48 x 48
Weight:	72kg

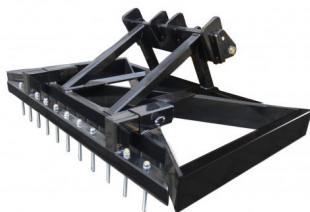


Volume bucket 111cm SH1

For moving sand, ground, gravel or other loose materials.

Article:	00495-111
Volume:	250l
Dimensions in cm(W x L x H):	111 x 74 x 63
Weight:	104kg

100/150 ATTACHMENTS



Levelling framework SH1

For levelling sand and gravel.
Scarifying rake included.

Article:	00448
Dimensions in cm(W x D x H):	130 x 83 x 55
Weight:	103kg



Carpet-remover SH1

For removing various floor coverings
from a concrete surface. Including 7 x 7mm blades.

Article:	00530
Dimensions in cm(W x D x H):	76 x 46 x 45
Weight:	190kg

See options for all available blade sizes.



Broom SH1

For brushing your paved surfaces.

Article:	00575
Dimensions in cm(W x D x H):	170 x 14 x 43
Weight:	25kg



Mechanical snow- / feed slider SH1

For moving "shifting" feed, straw, silage, snow or other loose materials.

Article:	00510
Dimensions in cm(W x D x H):	110 x 74 x 40
Weight:	61kg



Lifting arm SH1

For lifting loads using a load hook, hoisting chain or in combination with a
stone clamp and suction cups.

Article:	01350
Lifting hook:	02110
Bow Shackle 1T:	02180



Trailer hitch SH1

For shunting trailers, suitable for ø50mm towball.
Includes ø50mm ball.

Article:	01360
Dimensions in cm(W x D x H):	60 x 22 x 19,5
Weight:	14kg

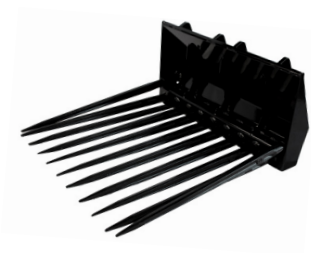
100/150 ATTACHMENTS



Pin Bucket SH1

For moving, lifting, tilting and breaking out street work, turf and other surfaces.

Article:	30090
Dimensions in cm (W x D x H):	118 x 86 x 39
Weight:	97kg



Pin Bucket Small SH1

For moving, lifting, tilting and breaking out street work, turf and other surfaces.

Article:	30090-76
Dimensions in cm (W x D x H):	76 x 86 x 39
Weight:	75kg



Set Pallet forks SH1

For lifting small pallets and solid materials.
Pallet board included.

Article:	00650
Fork length:	80cm
Dimensions in cm (W x D x H):	80 x 122 x 64
Weight:	83kg

100/150 HYDRAULIC

ATTENTION!

HOSE SET

The following attachments are standard equipped with hose set: SS-2.
Do you already own a machine? See Appendix 1 for the correct hose set choice.



Bucket with grab 111cm SH1

For moving manure, straw, silage, sand or other loose materials.

Article:	00504-112
Dimensions in cm(W x D x H):	111 x 63 x 52
Weight:	115kg
(Option) sideplates set:	00504-ZP



Bucket with grab 76cm SH1

For moving manure, straw, silage, sand or other loose materials.

Article:	00504-76
Dimensions in cm(W x D x H):	76 x 63 x 52
Weight:	87kg
(Option) sideplates set:	00504-ZP



Hydraulic manure forks with clamp 76cm SH1

For moving "lifting" and "tipping" of manure, straw, hay, grass and such.

Article:	00877-76
Dimensions in cm(W x D x H):	76 x 60 x 51
Weight:	70kg



Pinbucket with clamp SH1

For moving "lifting" and "tipping" debris, manure, green waste or other loose materials.

Article:	30095-76
Width:	76cm
Weight:	110kg



Hydraulic log grab SH1

For grabbing several small trunks or for grabbing a large trunk per unit. Without rotor.

Article:	01010
Dimensions in cm(W x L x H):	26 x 68 x 60
Weight:	77kg

100/150 HYDRAULIC

ATTENTION!

HOSE SET

The following attachments are standard equipped with hose set: SS-2.
Do you already own a machine? See Appendix 1 for the correct hose set choice.



Hydraulic earth drill SH1

For drilling holes in sandy soil.
Excluding drill.

Article:	01125
(Option) blocking lever SH100:	07100-A
(Option) blocking lever SH150:	05818-1
Weight:	41kg

ATTENTION!

LEAKAGE PIPING

It is necessary to mount a leakage pipe on the machine when you use this attachment (01125-LK).

Extension 50cm	01330
Extension 100cm	01325

Drills for the hydraulic earth drill (Length: 100cm)

Diameter (inch)	4	6	9	12	14	16	18	24
Diameter (mm)	100	150	230	300	360	410	460	610
Article	01150	01175	01200	01225	01250	01275	01280	01300
Weight	9kg	13kg	19kg	25kg	30kg	33kg	30kg	



Demolition hammer, GlobRam® RM40 SH1

Used for 76cm wide miniloaders

Coupling plate and round chisel included.

Article:	00946
Impact energy:	140 Joule
Weight:	60kg (Without coupling plate and chisel)

Loose chisels for RM40:

Round:	00946-SBR
Flat/round:	00946-SBP
Flat/wide:	00946-SBPV

Demolition hammer, GlobRam® RM45b SH1

Used for 112cm wide miniloaders

Coupling plate and round chisel included.

Article:	00943
Impact energy:	195 Joule
Weight:	65kg (Without coupling plate and chisel)

Loose chisels for RM45b:

Round:	00945-SBR
Flat/round:	00945-SBP
Flat/wide:	00945-SBPV

100/150 HYDRAULIC

ATTENTION!

HOSE SET

The following attachments are standard equipped with hose set: SS-2.
Do you already own a machine? See Appendix 1 for the correct hose set choice.



Hydraulic curbstone clamp (HK0472)

For lifting and placing various products made of concrete.
Excluding lifting arm, handles and certificated lifting hook.

Article:	02009
Max. open:	72cm
Min. closed:	4cm
Weight:	50kg
Lifting arm:	01350
Lifting hook:	02110
Bow Shackle 1T:	02180

Handles

To extend the handles on the clamp.

Article:	02025
----------	-------



Hydraulic grass-tile clamp (4V)

For transporting and placement of 2,3 or 4 grass-tiles, in a row.
Excluding lifting arm.

Article:	00850
Weight:	39kg
Lifting arm:	01350



Hydraulic grass-tile clamp (2x2)

For transporting and placement of grass-tiles, 2x2 in block connection.
Certificated chain included. Excluding lifting arm.

Article:	00855
Lifting arm:	01350
Dimensions in cm(W x L x H):	41.6-52.6 x 62 x 21.4
Weight:	37kg



Hydraulic slab- / curb clamp SH1

For transporting 1 row of tiles or curb stones.

Article:	00725
Max. open:	145cm
Min. closed:	90cm

100/150 HYDRAULIC

ATTENTION!

HOSE SET

The following attachments are standard equipped with hose set: SS-2.
Do you already own a machine? See Appendix 1 for the correct hose set choice.



Hydraulic stone clamp **SH1**

For transporting max. 80 stones. Usable for 3 or 4 rows of stones (60cm - 80cm).

Article:	00700
Max. open:	93cm
Min. closed:	59cm
Weight:	65kg



Hydraulic curbstone clamp **SH1**

For the transportation of (building) bricks.

Article:	00790
Max. open:	129cm
Min. closed:	76cm



Hydraulic clamp for rotating 90 degrees forwards **SH1**

For lifting and rotating (90°) various products made of concrete.

Article:	00775
Max. open:	83cm
Min. closed:	43cm
Rotation angle:	90°



Hydraulic stump grinder **SH1**

For removing tree roots and stumps.

Article:	010005
Dimensions in cm (W x D x H):	76 x 60 x 51
Diameter cutting wheel inc. teeth in cm:	42
Weight:	105kg



Hydraulic trencher, Digga® **SH1**

Ideal for trenching.

Article:	00975
(Option) blocking lever SH100:	07100-A
(Option) blocking lever SH150:	05818-1
Trench depth:	Max. 90cm
Trench width:	15cm
Weight:	217kg

100/150 HYDRAULIC

ATTENTION!

HOSE SET

The following attachments are standard equipped with hose set: SS-2.
Do you already own a machine? See Appendix 1 for the correct hose set choice.



Hydraulic mower deck SH1

3 blades.

Article:	30165
Dimensions in cm(W x D x H):	122 x 100 x 70
Weight:	123kg
(Option) blocking lever SH100:	07100-A
(Option) blocking lever SH150:	05818-1



Rotary tiller SH1

For milling ground (10cm deep) with stones and high grass.

Article:	100004
Dimensions in cm(W x D x H):	120 x 77 x 59
Weight:	194kg
(Option) blocking lever SH100:	07100-A
(Option) blocking lever SH150:	05818-1

ATTENTION!

LEAKAGE PIPING

It is necessary to mount a leakage pipe on the machine when you use this attachment (SH100: 01125-LK) (SH150: 07015).



Roller broom SH1

For cleaning hard surfaces.

Article:	00925
(Option) blocking lever SH100:	07100-A
(Option) blocking lever SH150:	05818-1
Dimensions in cm(W x D x H):	126 x 92 x 75
Weight:	105kg



Roller broom 111cm SH1

For cleaning hard surfaces and directly catching the dirt into the bucket.
Excluding bucket.

Article:	00926
(Option) blocking lever SH100:	07100-A
(Option) blocking lever SH150:	05818-1

100/150 HYDRAULIC

ATTENTION!

HOSE SET

The following attachments are standard equipped with hose set: SS-2.
Do you already own a machine? See Appendix 1 for the correct hose set choice.



Hydraulic weed brush without brush **SH1**

For removing weeds between stones or for cleaning gutters and sidewalks.

Excluding brush, including fender.

Article:	00939-STD
(Option) blocking lever SH100:	07100-A
(Option) blocking lever SH150:	05818-1
Dimensions in cm (W x L x H):	60 x 124 x 65
Weight:	50kg (Without brush)



Hydraulic weed brush steel **SH1**

For removing weeds between stones or for cleaning gutters and sidewalks.

Article:	00937-1-B
Diameter brush:	±80cm
Weight:	25kg



Hydraulic weed brush V2 steel **SH1**

For removing weeds between stones or for cleaning gutters and sidewalks.

Article:	00937-1-BE
Diameter brush:	±80cm
Weight:	16,5kg

SHERPA
300

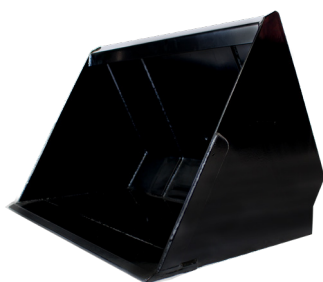
300 ATTACHMENTS



Bucket SH3 SHERPA 300

For moving "lifting" and "tipping" vowels, tiles, sand, soil, gravel or other loose materials.
Inlay plate and quick fastener included.

Article:	30070
Dimensions in cm (W x D x H):	129 x 80 x 67
Weight:	169kg



Volume bucket SH300

For moving "lifting" and "tipping" sand, soil, gravel or other loose materials.

Article:	30025
Volume:	286l
Dimensions in cm (W x D x H):	129 x 66 x 63
Weight:	142kg



Broom SH300

For brushing paved surfaces.

Article:	00580
Dimensions in cm (W x D x H):	170 x 14 x 78
Weight:	26kg

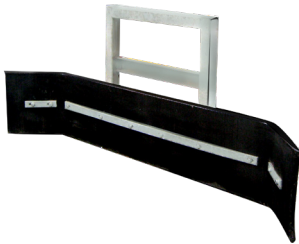


Set Pallet forks SH300

For moving pallets and solid materials.
Pallet board included.

Article:	00660
Fork length:	100cm
Min. width:	20cm
Max. width:	112cm
Weight:	164kg

300 ATTACHMENTS



Snow push / feeding slider **SH300**

For pushing animal feed or snow.

Article: 00515
Width: 200cm



Pin bucket **SH300**

For moving "lifting" and "tilting" vowels and tiles, breaking out street work, turf and other surfaces.

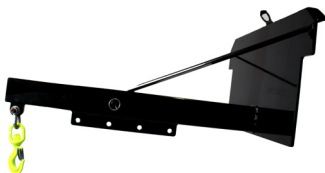
Article: 30110
Length of pins: 100cm
Dimensions in cm(W x D x H): 110 x 47 x 40
Weight: 61kg



Levelling framework **SH300**

For leveling sandy soils. With the scarifying rake, the top layer of the sand or grass surface can be detached again. Scarifying rake included.

Article: 70110
Dimensions in cm(W x D x H): 190 x 100 x 60
Weight: 134kg



Extendable lifting arm **SH300**

For lifting loads using a lifting hook, hoisting chain or in combination with a stone clamp and suction cups. Excluding certified lifting hook.

Article: 06481
Length: 77,6-132cm
Weight: 45kg
Lifting hook: 02110
Bow Shackle 2T: 02111



Roller broom Tuchel eco pro **SH23**

For sweeping different kind of surfaces. Including dirt collector with hydraulic emptying system. Parallel guide included.

Article: 00955
(Option) blocking lever: 05818-1

300 HYDRAULIC



Hydraulic weed brush steel SH300

For removing weeds between stones or for cleaning gutters and traffic islands. Including fender.

Article:	00939-ST23
Diameter brush:	±80cm
(Option) blocking lever:	05818-1
Spare brush:	00937-1-B



Hydraulic weed brush V2 steel SH300

For removing weeds between stones or for cleaning gutters and traffic islands. Including fender.

Article:	00939-STFK23
Diameter brush:	±80cm
(Option) blocking lever:	05818-1
Spare brush*:	00937-1-BE



Hydraulic curb clamp SH300

To transport half a pack of stones or tires. Excluding lifting arm and rotor.

Article:	01390
Lifting arm:	06481



Hydraulic stone clamp SH300 For transporting at most 80 stones. Usable for 3 or 4 rows of stones (60cm-80cm)

Article:	01380
Max. open:	93cm
Min. closed:	59cm
Weight:	74kg



Hydraulic curbstone clamp (HK0472)

For lifting and placing various products made of concrete. Excluding lifting arm, handles and certified lifting hook.

Article:	02009
Max. open:	72cm
Min. closed:	4cm
Weight:	50kg
Lifting arm:	06481
Lifting hook:	02110
Bow Shackle 1T:	02180

Handles

For extending handles on the clamp.

Article:	02025
----------	-------



300 HYDRAULIC



Hydraulic slab- / curb clamp **SH300**

For transporting two rows of tiles or curb stones.

Article:	00730
Max. open:	170cm
Min. closed:	90cm



Hydraulic grass-tile clamp **SH300** (4V)

For transporting and placement of 2,3 or 4 grass-tiles, in a row.
Excluding lifting arm.

Article:	00850
Lifting arm:	06481
Weight:	39kg



Hydraulic grass-tile clamp **SH300** (2x2)

For transporting and placement of grass-tiles, 2x2 in block connection.
Certificated chain included. Excluding lifting arm.

Article:	00855
Lifting arm:	06481
Dimensions in cm(W x D x H):	42-53 x 62 x 21
Weight:	37kg



Hydraulic bale clamp **SH300**

For picking up and transporting bales.

Article:	00915
Weight:	230kg
Max. width open:	210cm
Min. width closed:	70cm



Hydraulic trencher, Digga® **SH300**

Ideal for trenching.

Article:	00975-300
(Option) blocking lever:	05818-1
Trench depth:	Max. 90cm
Trench width:	10, 15 or 20cm
Weight:	217kg

300 HYDRAULIC



ATTENTION!

Hydraulic earth drill **SH300**

For drilling holes in sandy soil. Excluding drill.

Article:	01125-200
(Option) blocking lever:	05818-1
Leakage piping SH200:	07015-SH200
Leakage piping SH300:	07015-SH300
Gewicht:	41kg

LEAKAGE PIPING

It is necessary to mount a leakage pipe on the machine when you use this attachment.

Extension 50cm	01330
Extension 100cm	01325

Drills for the hydraulic earth drill (Length: 100cm)

Diameter (inch)	4	6	9	12	14	16	18	24
Diameter (mm)	100	150	230	300	360	410	460	610
Article	01150	01175	01200	01225	01250	01275	01280	01300
Weight	9kg	13kg	19kg	25kg	30kg	33kg	30kg	



Hydraulic manure forks with clamp **SH300**

For mucking out stables.

Article:	00873
Width:	140cm