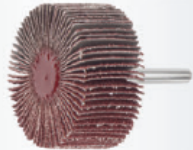




Industry

SFL, Flap wheels

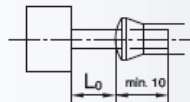
Ordering example: A2200040106240



**Packing unit**  
10 pcs. per type  
Further dimensions, qualities  
and shank lengths on request  
NK - reg. Aluminium Oxide

Description	Grits	D mm	T mm	S mm	L mm	n recon. (1/min)	n max. (1/min)	Product-Number	recommended for
SFL 04010.06	NK 240	40	10	6	40	12.000	18.000	A2200040106240	1 2 3 4 5 6 7 8
SFL 04010.06	NK 320	40	10	6	40	12.000	18.000	A2200040106320	1 2 3 4 5 6 7 8
SFL 04015.06	NK 40	40	15	6	40	12.000	18.000	A2200040156040	1 2 3 4 5 6 7 8
SFL 04015.06	NK 60	40	15	6	40	12.000	18.000	A2200040156060	1 2 3 4 5 6 7 8
SFL 04015.06	NK 80	40	15	6	40	12.000	18.000	A2200040156080	1 2 3 4 5 6 7 8
SFL 04015.06	NK 120	40	15	6	40	12.000	18.000	A2200040156120	1 2 3 4 5 6 7 8
SFL 04015.06	NK 150	40	15	6	40	12.000	18.000	A2200040156150	1 2 3 4 5 6 7 8
SFL 04015.06	NK 240	40	15	6	40	12.000	18.000	A2200040156240	1 2 3 4 5 6 7 8
SFL 04015.06	NK 320	40	15	6	40	12.000	18.000	A2200040156320	1 2 3 4 5 6 7 8
SFL 04020.06	NK 40	40	20	6	40	12.000	18.000	A2200040206040	1 2 3 4 5 6 7 8
SFL 04020.06	NK 60	40	20	6	40	12.000	18.000	A2200040206060	1 2 3 4 5 6 7 8
SFL 04020.06	NK 80	40	20	6	40	12.000	18.000	A2200040206080	1 2 3 4 5 6 7 8
SFL 04020.06	NK 120	40	20	6	40	12.000	18.000	A2200040206120	1 2 3 4 5 6 7 8
SFL 04020.06	NK 150	40	20	6	40	12.000	18.000	A2200040206150	1 2 3 4 5 6 7 8
SFL 04020.06	NK 240	40	20	6	40	12.000	18.000	A2200040206240	1 2 3 4 5 6 7 8
SFL 04020.06	NK 320	40	20	6	40	12.000	18.000	A2200040206320	1 2 3 4 5 6 7 8
SFL 04030.06	NK 40	40	30	6	40	12.000	18.000	A2200040306040	1 2 3 4 5 6 7 8
SFL 04030.06	NK 60	40	30	6	40	12.000	18.000	A2200040306060	1 2 3 4 5 6 7 8
SFL 04030.06	NK 80	40	30	6	40	12.000	18.000	A2200040306080	1 2 3 4 5 6 7 8
SFL 05010.06	NK 60	50	10	6	40	9.000	12.000	A2200050106060	1 2 3 4 5 6 7 8
SFL 05010.06	NK 80	50	10	6	40	9.000	12.000	A2200050106080	1 2 3 4 5 6 7 8
SFL 05010.06	NK 120	50	10	6	40	9.000	12.000	A2200050106120	1 2 3 4 5 6 7 8
SFL 05010.06	NK 150	50	10	6	40	9.000	12.000	A2200050106150	1 2 3 4 5 6 7 8
SFL 05010.06	NK 240	50	10	6	40	9.000	12.000	A2200050106240	1 2 3 4 5 6 7 8
SFL 05015.06	NK 40	50	15	6	40	9.000	12.000	A2200050156040	1 2 3 4 5 6 7 8
SFL 05015.06	NK 60	50	15	6	40	9.000	12.000	A2200050156060	1 2 3 4 5 6 7 8
SFL 05015.06	NK 80	50	15	6	40	9.000	12.000	A2200050156080	1 2 3 4 5 6 7 8
SFL 05015.06	NK 120	50	15	6	40	9.000	12.000	A2200050156120	1 2 3 4 5 6 7 8
SFL 05015.06	NK 150	50	15	6	40	9.000	12.000	A2200050156150	1 2 3 4 5 6 7 8
SFL 05015.06	NK 240	50	15	6	40	9.000	12.000	A2200050156240	1 2 3 4 5 6 7 8
SFL 05015.06	NK 320	50	15	6	40	9.000	12.000	A2200050156320	1 2 3 4 5 6 7 8
SFL 06020.06	NK 40	50	20	6	40	9.000	12.000	A2200060206040	1 2 3 4 5 6 7 8

The stated maximum operating speed only applies to a maximum overhang L<sub>0</sub> of 20 mm. Other overhang dimensions must be calculated separately.



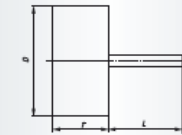
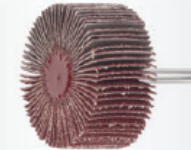
NEW  
NEW  
NEW



Industry

SFL, Flap wheels

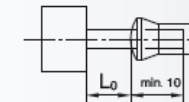
Ordering example: A2200060206060



**Packing unit**  
10 pcs. per type  
Further dimensions, qualities  
and shank lengths on request  
NK - reg. Aluminium Oxide

Description	Grits	D mm	T mm	S mm	L mm	n recon. (1/min)	n max. (1/min)	Product-Number	recommended for
SFL 06020.06	NK 60	50	20	6	40	9.000	12.000	A2200060206060	1 2 3 4 5 6 7 8
SFL 06020.06	NK 80	50	20	6	40	9.000	12.000	A2200060206080	1 2 3 4 5 6 7 8
SFL 06020.06	NK 120	50	20	6	40	9.000	12.000	A2200060206120	1 2 3 4 5 6 7 8
SFL 06020.06	NK 150	50	20	6	40	9.000	12.000	A2200060206150	1 2 3 4 5 6 7 8
SFL 06020.06	NK 240	50	20	6	40	9.000	12.000	A2200060206240	1 2 3 4 5 6 7 8
SFL 06020.06	NK 320	50	20	6	40	9.000	12.000	A2200060206320	1 2 3 4 5 6 7 8
SFL 06030.06	NK 40	50	30	6	40	9.000	12.000	A2200060306040	1 2 3 4 5 6 7 8
SFL 06030.06	NK 60	50	30	6	40	9.000	12.000	A2200060306060	1 2 3 4 5 6 7 8
SFL 06030.06	NK 80	50	30	6	40	9.000	12.000	A2200060306080	1 2 3 4 5 6 7 8
SFL 06030.06	NK 120	50	30	6	40	9.000	12.000	A2200060306120	1 2 3 4 5 6 7 8
SFL 06030.06	NK 150	50	30	6	40	9.000	12.000	A2200060306150	1 2 3 4 5 6 7 8
SFL 06030.06	NK 240	50	30	6	40	9.000	12.000	A2200060306240	1 2 3 4 5 6 7 8
SFL 06030.06	NK 320	50	30	6	40	9.000	12.000	A2200060306320	1 2 3 4 5 6 7 8
SFL 06030.06	NK 40	60	20	6	40	8.000	12.000	A2200060306040	1 2 3 4 5 6 7 8
SFL 06030.06	NK 60	60	20	6	40	8.000	12.000	A2200060306060	1 2 3 4 5 6 7 8
SFL 06030.06	NK 80	60	20	6	40	8.000	12.000	A2200060306080	1 2 3 4 5 6 7 8
SFL 06030.06	NK 120	60	20	6	40	8.000	12.000	A2200060306120	1 2 3 4 5 6 7 8

The stated maximum operating speed only applies to a maximum overhang L<sub>0</sub> of 20 mm. Other overhang dimensions must be calculated separately.



NEW  
NEW  
NEW



71.1%

