

SPIRAL Range

Spiral Hoop electric bender

Our machines **SPIRAL 26** and **SPIRAL 36** are specially designed to produce spiral or hoop rebar, at job sites or workshops, for structures used in any concrete circular formworks, such as foundations, scorings, water dams and reservoirs, domes, arches, tunnels and round pillars and columns.

They have a capacity from min rebar 6mm (1/4" - #1) up to max. rebar 26mm (1" - #8) and 36mm (1-3/8" / #11), depending on the machine model and the rebar strength (Grade).

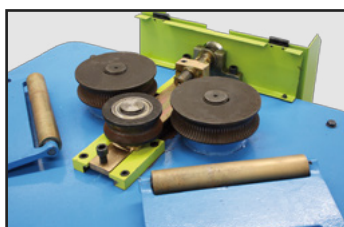
Spiral Hoop bender.

- It does not require to pre-bend the leading end of the rebar.
- Safety pedal operated.
- Automatic or manual operation.
- Double speed operation, 7 or 14 meters (23ft. and 46ft.) per minute.
- Left and right bending turn.
- 2 tempered cog-wheel formers.
- Adjustable central cog-wheel for spiral or hoop curve radius.
- 2 ramps with rollers for pitch adjustment.
- Complete control panel, including emergency stop button, on/off switch, warning lights and operation switch selector.

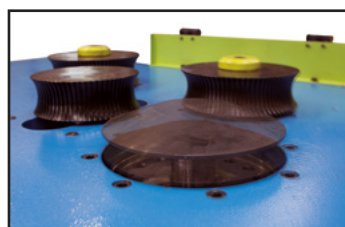


SPIRAL 26

FEATURES AND BENEFITS OF THE SPIRAL RANGE



Designed for production of spirals, hoops and arches.



Adjustable formers.



Complete command centre.



Adjustable stop (SPIRAL 36).



Spiral radius adjustment.



Impact-resistant emergency stop.

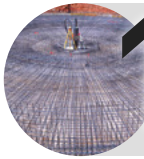


Motor reducer.



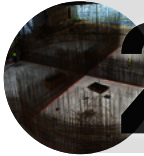
Control panel box.

APPLICATIONS:



1

Applications in foundations and pipelines.



2

Applications in water dams and reservoirs.



3

Applications in domes, arches and tunnels.



4

Applications in round pillars and columns.



SPIRAL 26

SPIRAL 36

Bending capacity

Yield strength / Grade	Re=N / mm ² 480 / G-60	Re=N / mm ² 650 / G-75
Tensile strength	Rm=N / mm ² 650	Rm=N / mm ² 850
Minimum Ø spiral with rebar	Ø6 mm / 1/4"	
Minimum spiral Bending Ø mm (in.)	Ø 270 (11")	
	Millimeters - In (#)	
SPIRAL 26	Ø26 - 1" (#8)	Ø20 - 7/8" (#7)
SPIRAL 36	Ø32 - 1 1/4" (#10)	Ø26 - 1" (#8)

Accessories included

SPIRAL 26	1	1	1
SPIRAL 36	1	1	1

Item code	SPIRAL 26		SPIRAL 36	
	3 - PHASE	3 - PHASE	3 - PHASE	3 - PHASE
Motor voltage (V)	20251520	20251521	20252020	20252021
Frequency (Hz) / in (pins)	230 / 400		230 / 400	
Kw / Hp 1st. speed	50 / 5P		50 / 5P	
Kw / Hp 2nd. speed	60 / 4P		60 / 4P	
Cycles / minute 1st. speed	1,5 / 2		1,5 / 2	
Cycles / minute 2nd. speed	2,5 / 3,2		2,5 / 3,2	
Net weight (Kg. / Lbs.)	697		697	
Packaging dimensions L x W x H (mm / in)	1387		1387	
	300 / 661,38		430 / 948	
	1220 x 920 x 1150 / 48,03" x 36,22" x 45,27"		1220 x 920 x 1150 / 48,03" x 36,22" x 45,27"	