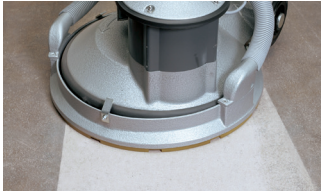


» ES 51S – 51S3 – STR 701



Cleaning



Grinding



Crystallization

ES 51S and ES 51S3 – Heavy duty cleaning and renovation

Industrial workhorse for heavy duty applications in the cleaning and renovation industry. Robust and reliable design. Suited for the most heaviest application in the cleaning industry.

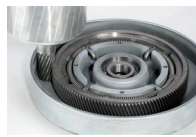
Applications

Industrial cleaning, renovation, crystallization, stone floor polishing, coating removal.

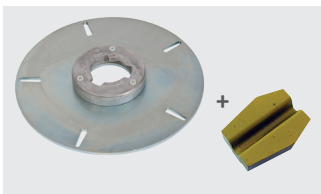
Features

- High working performance
- Dust- and water sealed motor and drive mechanism
- Metal gear drive
- 1500 Watt motor
- For heavy duty work
- Long service life
- Up to 90 kg operating weight

ES 51S ES 51S3



Metal gear drive



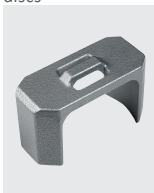
Grinding with diamonds



Tungsten carbide discs



Corundum stone



Saddle weight, 24 kg



Brush aggregate

STR 701 – Grinding in the construction industry

Grinding and renovation of concrete surfaces. High performance due to its operating weight with up to 90 kg and powerful motor. Robust in design and suited for all kind of heavy renovation work.

Applications

Grinding, coating removal, industrial cleaning.

Features

- High working performance
- Dust- and water sealed motor and drive mechanism
- Metal gear drive
- Strong motor
- For heavy duty work
- Long service life
- Up to 90 kg operating weight
- Heavy duty handle bearing

STR 701



Metal gear drive



STR-handle bearing

Technical data		ES 51S	ES 51S3	STR 701L	STR 701LVF
Voltage	V	230	400	230	230
Frequency	Hz	50	50	50	50
Power input	Watt	2300		2300	2300
Power output	Watt		1800		
∅ – working width	mm	510	510	510	510
Tool speed	r.p.m.	156	156	156	156
Brush pressure	g/cm ²	51–210	51–210	51–210	51–210
Torque	Nm	110	110	110	110
Power supply cord	m	12	25	12	12
Guide rod length	mm	930	930	930	1200
Noise level	dB(A)	62	62	62	62
Weight	kg	57-82	57-82	57-82	57-82
Ref. No.		607020	607030	106251	107351