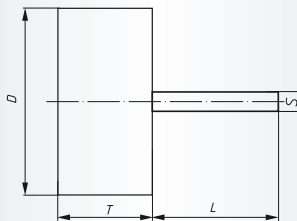
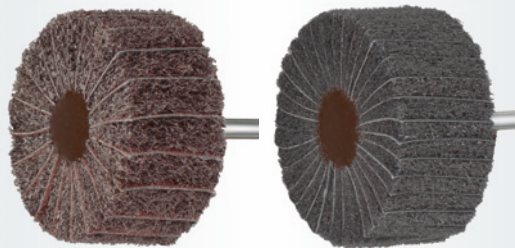


SFM, Flap wheels of abrasive fleece with abrasive cloth
Ordering example: A2204040206104

Packing unit:

10 pcs. per type

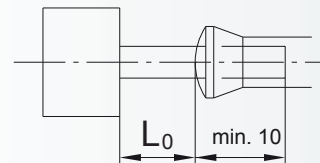
Further dimensions, qualities and shank lengths on request.

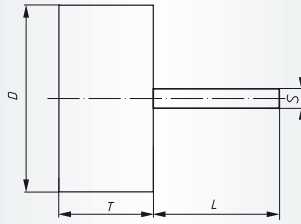
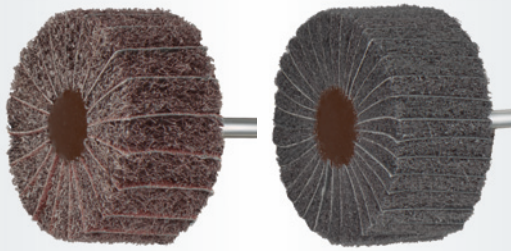
A = reg. Aluminium Oxide

C = Silicon carbide

Description	Grits	D mm	T mm	S mm	L mm	n recom. (1/min)	n max. (1/min)	Product-Number	recommended for	
SFM 04020.06	A 104/80	40	20	6	40	7.500	14.000	A2204040206104	① ② ③ ④ ⑤ ⑥ ⑦ ⑧	■
SFM 04020.06	A 106/150	40	20	6	40	7.500	14.000	A2204040206106	① ② ③ ④ ⑤ ⑥ ⑦ ⑧	■
SFM 04020.06	A 107/240	40	20	6	40	7.500	14.000	A2204040206107	① ② ③ ④ ⑤ ⑥ ⑦ ⑧	■
SFM 04020.06	C 204/80	40	20	6	40	7.500	14.000	A2204040206204	① ② ③ ④ ⑤ ⑥ ⑦ ⑧ ⑨	■
SFM 04020.06	C 206/150	40	20	6	40	7.500	14.000	A2204040206206	① ② ③ ④ ⑤ ⑥ ⑦ ⑧ ⑨	■
SFM 04030.06	A 104/80	40	30	6	40	7.500	14.000	A2204040306104	① ② ③ ④ ⑤ ⑥ ⑦ ⑧	■
SFM 04030.06	A 106/150	40	30	6	40	7.500	14.000	A2204040306106	① ② ③ ④ ⑤ ⑥ ⑦ ⑧	■
SFM 04030.06	A 107/240	40	30	6	40	7.500	14.000	A2204040306107	① ② ③ ④ ⑤ ⑥ ⑦ ⑧	■
SFM 04030.06	C 204/80	40	30	6	40	7.500	14.000	A2204040306204	① ② ③ ④ ⑤ ⑥ ⑦ ⑧ ⑨	■

The stated maximum operating speed only applies to a maximum overhang L_0 of 20 mm. Other overhang dimensions must be calculated separately.



SFM, Flap wheels of abrasive fleece with abrasive cloth
Ordering example: A2204040306206

Packing unit:

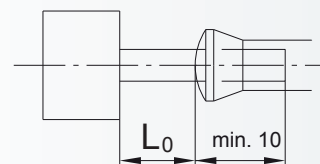
10 pcs. per type

Further dimensions, qualities and shank lengths on request.

 A = reg. Aluminium Oxide
 C = Silicon carbide

Description	Grits	D mm	T mm	S mm	L mm	n recom. (1/min)	n max. (1/min)	Product-Number	recommended for	
SFM 04030.06	C 206/150	40	30	6	40	7.500	14.000	A2204040306206	① ② ③ ④ ⑤ ⑥ ⑦ ⑧ ⑨	■
SFM 04030.06	C 207/240	40	30	6	40	7.500	14.000	A2204040306207	① ② ③ ④ ⑤ ⑥ ⑦ ⑧ ⑨	■
SFM 05020.06	A 104/80	50	20	6	40	6.000	11.000	A2204050206104	① ② ③ ④ ⑤ ⑥ ⑦ ⑧	■
SFM 05020.06	A 106/150	50	20	6	40	6.000	11.000	A2204050206106	① ② ③ ④ ⑤ ⑥ ⑦ ⑧	■
SFM 05020.06	C 206/150	50	20	6	40	6.000	11.000	A2204050206206	① ② ③ ④ ⑤ ⑥ ⑦ ⑧ ⑨	■
SFM 05030.06	A 106/150	50	30	6	40	6.000	11.000	A2204050306106	① ② ③ ④ ⑤ ⑥ ⑦ ⑧	■
SFM 05030.06	A 107/240	50	30	6	40	6.000	11.000	A2204050306107	① ② ③ ④ ⑤ ⑥ ⑦ ⑧	■
SFM 05040.06	A 104/80	50	40	6	40	6.000	11.000	A2204050406104	① ② ③ ④ ⑤ ⑥ ⑦ ⑧	■
SFM 05040.06	A 106/150	50	40	6	40	6.000	11.000	A2204050406106	① ② ③ ④ ⑤ ⑥ ⑦ ⑧	■
SFM 06030.06	A 104/80	60	30	6	40	5.000	9.000	A2204060306104	① ② ③ ④ ⑤ ⑥ ⑦ ⑧	■
SFM 06030.06	A 106/150	60	30	6	40	5.000	9.000	A2204060306106	① ② ③ ④ ⑤ ⑥ ⑦ ⑧	■
SFM 06030.06	A 107/240	60	30	6	40	5.000	9.000	A2204060306107	① ② ③ ④ ⑤ ⑥ ⑦ ⑧	■
SFM 06030.06	C 204/80	60	30	6	40	5.000	9.000	A2204060306204	① ② ③ ④ ⑤ ⑥ ⑦ ⑧ ⑨	■
SFM 06030.06	C 206/150	60	30	6	40	5.000	9.000	A2204060306206	① ② ③ ④ ⑤ ⑥ ⑦ ⑧ ⑨	■
SFM 06030.06	C 207/240	60	30	6	40	5.000	9.000	A2204060306207	① ② ③ ④ ⑤ ⑥ ⑦ ⑧ ⑨	■
SFM 06040.06	A 104/80	60	40	6	40	5.000	9.000	A2204060406104	① ② ③ ④ ⑤ ⑥ ⑦ ⑧	■
SFM 06040.06	A 106/150	60	40	6	40	5.000	9.000	A2204060406106	① ② ③ ④ ⑤ ⑥ ⑦ ⑧	■
SFM 06040.06	A 107/240	60	40	6	40	5.000	9.000	A2204060406107	① ② ③ ④ ⑤ ⑥ ⑦ ⑧	■
SFM 06040.06	C 204/80	60	40	6	40	5.000	9.000	A2204060406204	① ② ③ ④ ⑤ ⑥ ⑦ ⑧ ⑨	■
SFM 06050.06	A 104/80	60	50	6	40	5.000	9.000	A2204060506104	① ② ③ ④ ⑤ ⑥ ⑦ ⑧	■
SFM 06050.06	A 106/150	60	50	6	40	5.000	9.000	A2204060506106	① ② ③ ④ ⑤ ⑥ ⑦ ⑧	■
SFM 08040.06	A 104/80	80	40	6	40	4.000	7.000	A2204080406104	① ② ③ ④ ⑤ ⑥ ⑦ ⑧	■
SFM 08040.06	A 106/150	80	40	6	40	4.000	7.000	A2204080406106	① ② ③ ④ ⑤ ⑥ ⑦ ⑧	■
SFM 08040.06	A 107/240	80	40	6	40	4.000	7.000	A2204080406107	① ② ③ ④ ⑤ ⑥ ⑦ ⑧	■
SFM 08050.06	A 104/80	80	50	6	40	4.000	7.000	A2204080506104	① ② ③ ④ ⑤ ⑥ ⑦ ⑧	■
SFM 08050.06	A 106/150	80	50	6	40	4.000	7.000	A2204080506106	① ② ③ ④ ⑤ ⑥ ⑦ ⑧	■
SFM 08050.06	A 107/240	80	50	6	40	4.000	7.000	A2204080506107	① ② ③ ④ ⑤ ⑥ ⑦ ⑧	■
SFM 08050.06	C 204/80	80	50	6	40	4.000	7.000	A2204080506204	① ② ③ ④ ⑤ ⑥ ⑦ ⑧ ⑨	■
SFM 08050.06	C 206/150	80	50	6	40	4.000	7.000	A2204080506206	① ② ③ ④ ⑤ ⑥ ⑦ ⑧ ⑨	■

The stated maximum operating speed only applies to a maximum overhang L_0 of 20 mm. Other overhang dimensions must be calculated separately.



Material classification

- 1 STEELS AND CAST STEELS**
Rm up to 800 N/mm²
 - common structural steels
 - free cutting steels
 - case hardened steels
 - fine grained structural steels
 - extruded steels
 - toughened structural steels
 - boiler plate
 - nitrided steels
 - cast steels
 - heat treated steels
 - heat resistant structural steels
- 2 ALLOYED, TEMPERED STEELS**
Rm 800 up to 1200 N/mm²
 - case hardened steels
 - spring steels
 - fine grained structural steels
 - nitrided steels
 - heat treated steels
 - wear resistant steels
 - bearing steels
- 3 TOOL STEELS** Rm up to 1300 N/mm²
 - 60 - 65 HRC
 - high-speed steels
 - non-alloyed tool steels
 - cold working tool steels
 - hot working tool steels
- 4 RUST, ACID AND HEAT RESISTANT STEELS AND CAST STEELS**
 - austenitic
 - ferritic
 - ferritic-austenitic
 - heat-resistant
 - martensitic
 - stainless, sulphurized

- 5 CAST IRON**
- 6 ALUMINIUM, MAGNESIUM AND COPPER ALLOYS**
 - over 300 HB
 - 200-300 HB
 - up to 200 HB
 - over 15% Si
 - 10-15% Si
 - 0,5-10% Si
 - below 0,5% Si
- 7 TITANIUM AND NICKEL ALLOYS**
 - Rm 900 up to 1500 N/mm²
 - Rm up to 900 N/mm²
- 8 PLASTICS, WOOD, RUBBER**
- 9 GLASS / CARBIDES**
- 10 STONE / TILES / GAS CEMENT**
- 11 CONCRETE / REINFORCED CONCRETE**
- 12 CERAMIC / FLOOR TILES**
- 13 MARBLE**
- 14 GRANITE**
- 15 FRESHLY POURED CONCRETE**
- 16 ASPHALT**

- best suitable
- suitable
- delivery ex-stock
- ▲ delivery on request
- Ⓢ regrind service, please enquire

Safety Symbols

			
Wear eye protection	Wear hearing protection	Wear a respirator	Read the instructions
			
Wear gloves	Only permitted with a back-up pad		
			
Not permitted for wet grinding	Not permitted for face grinding	Do not use if damaged	Do not use for freehand cutting