

made
in
germany



Ultrasonics.Steam.Ultraclean.



Ultrasonic devices

Elmasonic xtra TT

Powerful tabletop units in a class of their own

- Powerful ultrasonic cleaning for heavy-duty applications
- Tabletop units in 4 sizes ranging from 3 litres to 20 litres
- Greater ultrasound effect due to switchable Dynamic-function
- Integrated Sweep-function for uniform sound field distribution in the cleaning bath
- Long-lasting devices with 3 years warranty
- Visual limit temperature warning to protect sensitive parts

Elmasonic xtra TT

Robust tabletop ultrasonic devices for heavy-duty applications



Industrial parts cleaning of motor parts, filters, etc.



Cleaning of rings, necklaces, earrings, etc.



Cleaning of watch parts like straps, cases, etc.

Elmasonic xtra TT tabletop ultrasonic devices are designed for use in production environments, workshops and servicing. Features like the permanently integrated Sweep-function, the switchable Dynamic-function or the individually settable limit temperature with LED warning indicator make the cleaning of parts in day to day work much easier.

All functions and cleaning parameters like time and heating preselection and ultrasonic frequency are arranged user-friendly on the control panel on the front of the device where users can set and monitor them at a glance.

With their ultrasonic performance of 37 kHz, Elmasonic xtra TT devices are rated for continuous heavy-duty operation. The tanks are made of special stainless steel, which makes them robust with a long service life. If they are used in single-shift operation, they are guaranteed for three years.



Application examples before and after cleaning

Jewellery ring



Removal of wear dirt

Watch case



Removal of polishing pastes

Motor parts



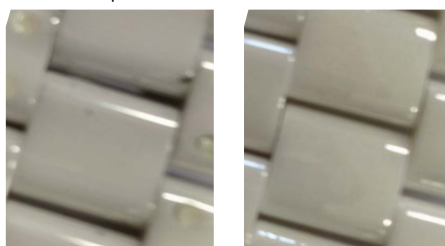
Removal of oxidation and other contaminants

Necklace



Removal of polishing pastes

Watch strap



Removal of rust, oil and dirt particles

Gear wheel



Removal of grease and silicone



Elmasonic xtra TT

Functional technology of modern design for higher cleaning quality



Robust tank made of special stainless steel with fill level marking

Clearly arranged control panel that is protected from spraying water with

- Individual time and temperature regulation
- Tried and tested Sweep function
- Start/stop and Dynamic-function
- Settable limit temperature with LED warning indicator

Quick and easy draining of the contaminated cleaning liquid via the ball valve drain

Functions of Elmasonic xtra TT ultrasonic devices:

- Permanently integrated Sweep-function for **uniform distribution of the ultrasonic effect** in the entire ultrasonic bath.
- Switchable **Dynamic-function** increases the peak ultrasonic performance. This improves the effectivity of cleaning and makes it possible to remove even the most stubborn contaminants.
- Individually settable limit temperature with LED warning indicator on reaching the temperature. Sensitive parts like jewellery or plastic parts are handled gently.
- Clearly arranged, control unit that is protected from spraying water.
- **Temperature-controlled Auto-Start function:** the ultrasound starts automatically when the preselected temperature is reached.
- User safety with safety shutdown



Ultrasonics.Steam.Ultraclean.

Appropriate accessories and coordinated cleaning chemicals for perfect cleaning results



Baskets made of stainless steel



Perforated cover for using beakers



Noise protection box

Cleaning Chemistry

Depending on the cleaning job, Elma has just the right cleaning chemicals. From alkaline to acidic, all of our cleaning concentrates have been developed and tested in our in-house application lab.

- **Elma Luxury Clean** for watch and jewellery cleaning jobs.
- **Elma Tec Clean** for industrial parts cleaning in workshops and servicing.



Technical data

	xtra TT 30H	xtra TT 60H	xtra TT 120H	xtra TT 200H
Ultrasonic frequency (kHz)	37	37	37	37
Tank labour capacity (l)	2.0	5.0	10.0	13.0
Max. tank capacity (l)	3.0	6.5	14.0	18.0
Ultrasonic power effective (W)	140	150	200	300
Heating power (W)	400	400	800	1200
Unit external dimensions W/D/H (mm)	360 / 230 / 250	420 / 250 / 300	440 / 340 / 350	420 / 390 / 330
Tank internal dimensions W/D/H (mm)	240 / 130 / 100	300 / 150 / 150	300 / 240 / 200	320 / 280 / 200
Max. basket loading (kg)	1.0	3.0	7.0	8.0
Basket internal dimensions W/D/H (mm)	196 / 112 / 39	257 / 132 / 74	262 / 222 / 114	280 / 250 / 114
Weight (kg)	6.0	10.0	11.0	13.0



Ultrasonics.Steam.Ultraclean.